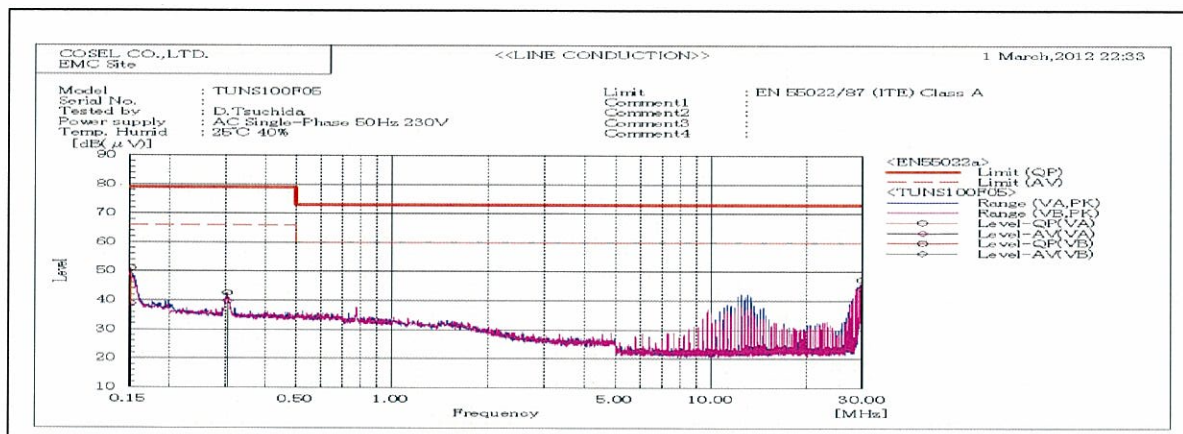
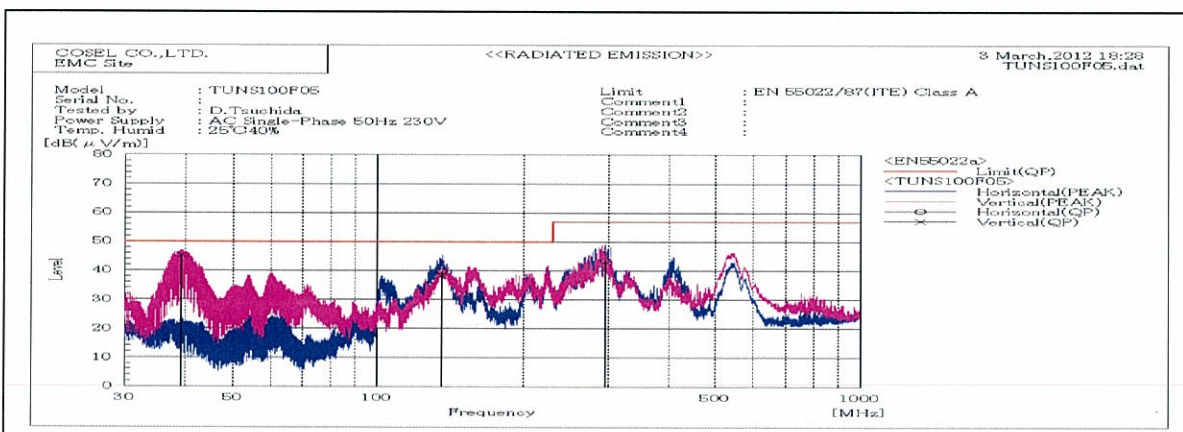


DATA SHEET		Date	17-Apr-12
Model	TUNS100F05	Temp.	25 degreeC
Test	EMI	Humid.	40 %RH
	Line conduction & Radiated emission	Tested by	D.Tsuchida



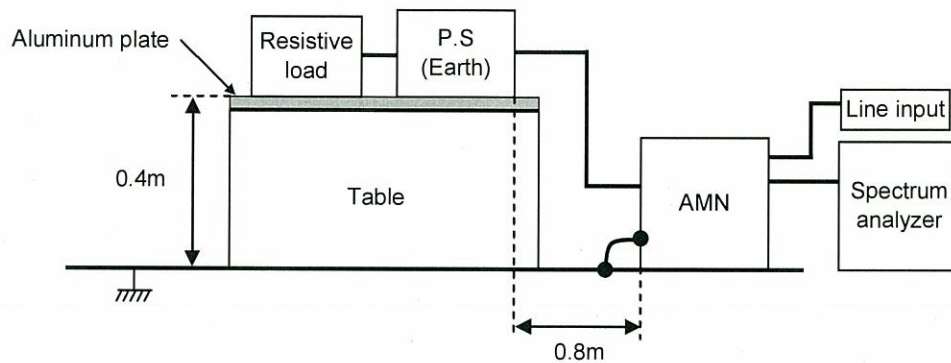
Frequency MHz	Line Phase	Reading dB(uV)		Factor dB	Level dB(uV)		Limit dB(uV)		Margin dB		Pass/ Fail
		QP	AV		QP	AV	QP	AV	QP	AV	
0.15132	VA	40.9	28.8	10.2	51.1	39	79	66	27.9	27	Pass
0.30353	VA	32.6	29.8	10	42.6	39.8	79	66	36.4	26.2	Pass
29.8128	VB	36.3	33.2	11	47.3	44.2	73	60	25.7	15.8	Pass



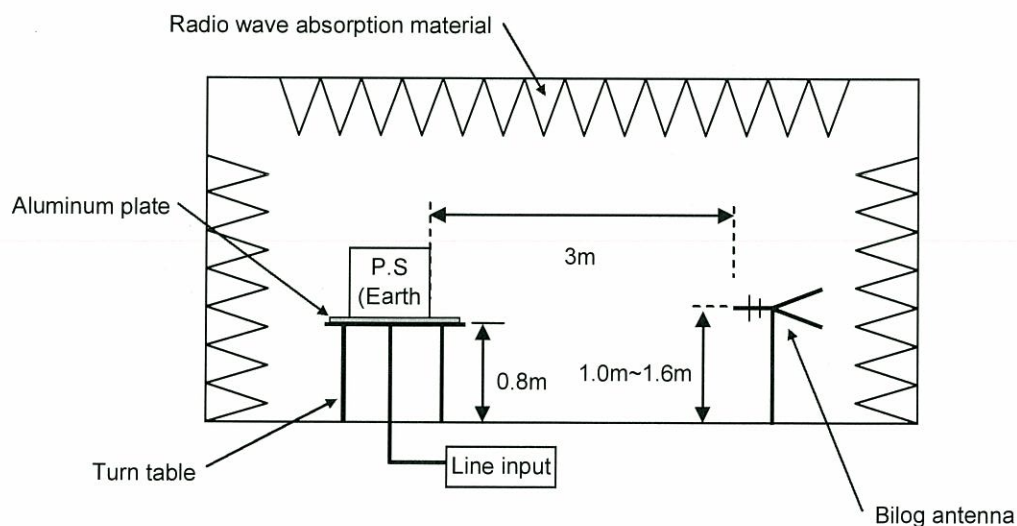
Frequency MHz	Polarization	Stability	Reading dB(uV)		Space Loss dB	Level dB(mW)		Limit dB(mW)	Margin dB	Height cm	Angle deg	Pass/ Fail
			QP	AV		QP	AV					
39.246	V	Stable	60.8	-15.5		45.3		50	4.7	100	297	Pass
136.008	H	Stable	59.8	-20		39.8		50	10.2	136	333	Pass
135.974	V	Stable	55.6	-17.4		38.2		50	11.8	108	312	Pass
294.823	H	Stable	61.3	-17.8		43.5		57	13.5	104	117	Pass

DATA SHEET		Date	17-Apr-12
Model	Circuit used for measurement	Temp.	25 degreeC
Test	EMI	Humid.	40 %RH
	Line conduction & Radiated emission	Tested by	D.Tsuchida

1. Line conduction



2. Radiated emission

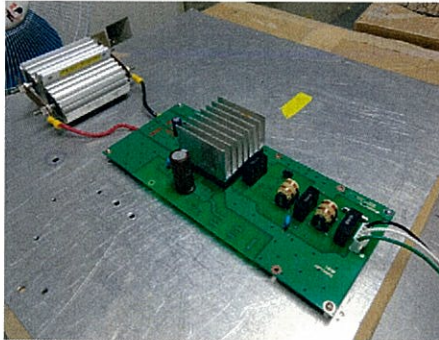


Test: EMI

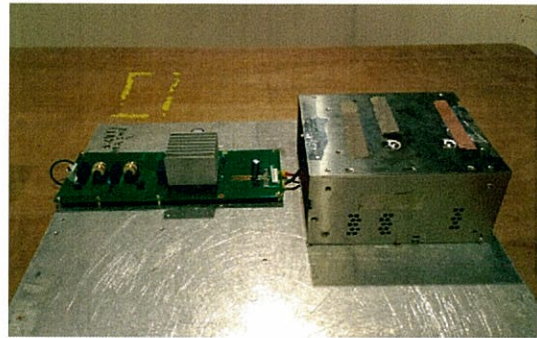
Model Name: TUNS100F Series

○ Photographs of Test Set-Up

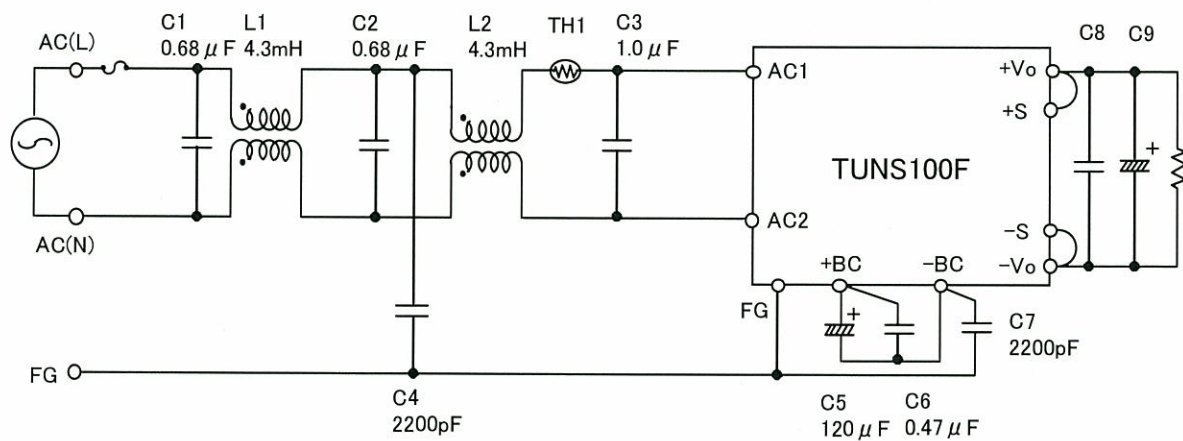
LINE CONDUCTION



RADIATED EMISSION



○ Test circuit



L1,L2 : SSB11V-R17043(NEC TOKIN)

TH1 : 8D2-11(SEMITEC)

C8 : TUNS100F05 10 μF

TUNS100F12 10 μF

TUNS100F24 4.7 μF

C9 : TUNS100F05 2200 μF

TUNS100F12 470 μF

TUNS100F24 220 μF