

DATA SHEET

Model TUHS3F12

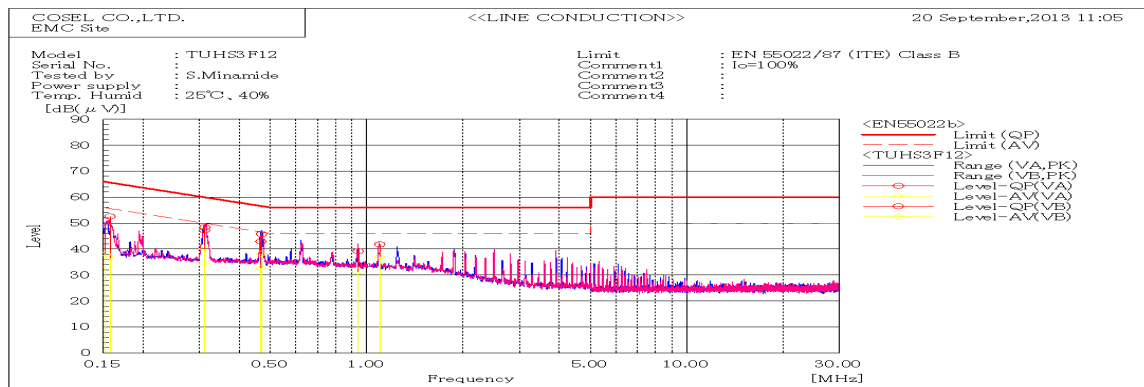
Date 16-Dec-13

Test EMI
Line conduction & Radiated emission

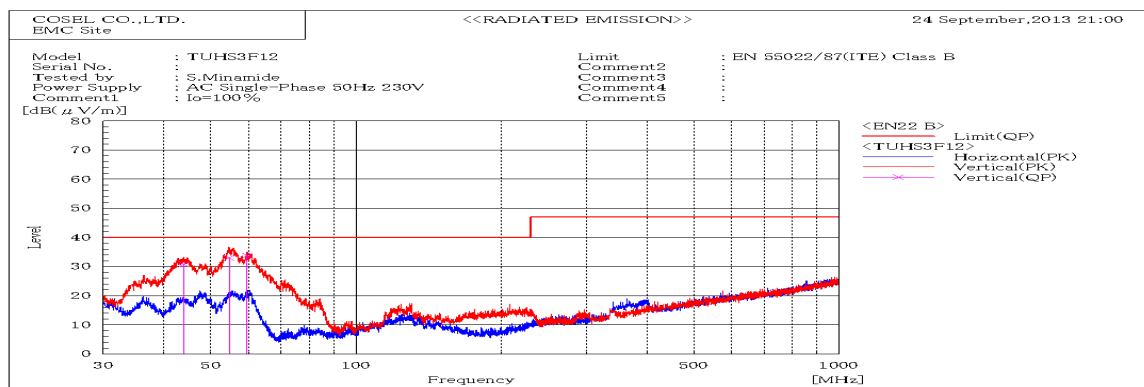
Temp. 25 degreeC

Humid. 40 %RH

Tested by S.Minamide



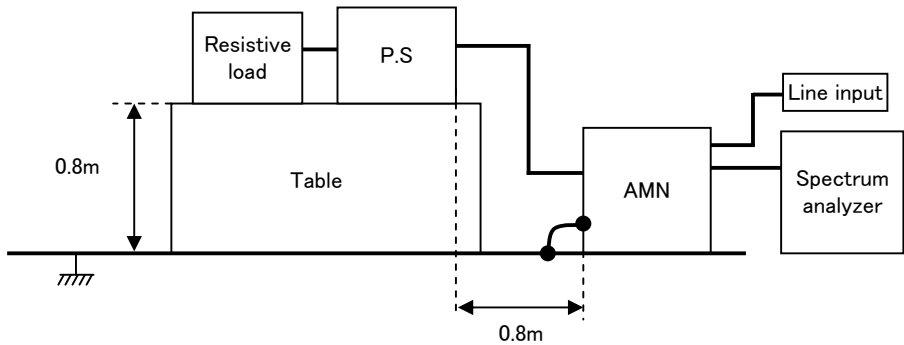
| Frequency MHz | Harm | Line Phase | Reading dB(μV) | | Factor dB | Level dB(μV) | | Limit dB(μV) | | Margin dB | | Pass/ Fail | Remark |
|------------------|------|---------------|-------------------|------|--------------|-----------------|------|-----------------|------|--------------|------|---------------|--------|
| | | | QP | AV | | QP | AV | QP | AV | QP | AV | | |
| 0.15754 | | VA | 32.4 | 16.3 | 20.2 | 52.6 | 36.5 | 65.6 | 55.6 | 13.0 | 19.1 | Pass | |
| 0.1525 | | VB | 28.2 | 17.8 | 20.2 | 48.4 | 38.0 | 65.9 | 55.9 | 17.5 | 17.9 | Pass | |
| 0.31149 | | VB | 28.3 | 20.0 | 20.1 | 48.4 | 40.1 | 59.9 | 49.9 | 11.5 | 9.8 | Pass | |
| 0.31087 | | VA | 27.1 | 14.2 | 20.1 | 47.2 | 34.3 | 59.9 | 49.9 | 12.7 | 15.6 | Pass | |
| 0.46703 | | VA | 22.8 | 12.6 | 20.1 | 42.9 | 32.7 | 56.6 | 46.6 | 13.7 | 13.9 | Pass | |
| 0.46864 | | VB | 25.7 | 18.0 | 20.1 | 45.8 | 38.1 | 56.5 | 46.5 | 10.7 | 8.4 | Pass | |
| 0.93971 | | VA | 19.0 | 11.0 | 20.2 | 39.2 | 31.2 | 56.0 | 46.0 | 16.8 | 14.8 | Pass | |
| 1.09756 | | VB | 21.6 | 16.8 | 20.2 | 41.8 | 37.0 | 56.0 | 46.0 | 14.2 | 9.0 | Pass | |



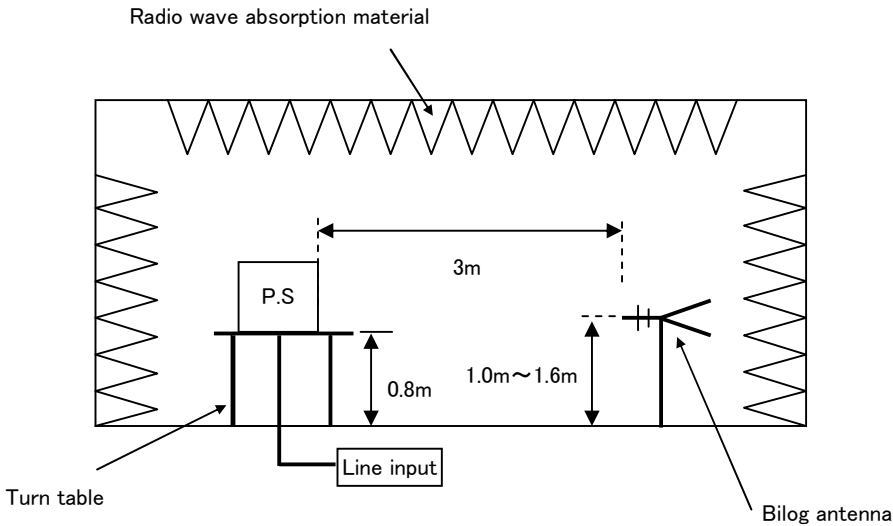
| Frequency MHz | Polarization | Stability | Reading dB(μV) | | Space Loss dB | Level dB(mW) | Limit dB(mW) | Margin dB | Pass/ Fail | Height cm | Angle deg | Remark |
|------------------|--------------|-----------|-------------------|----|---------------------|-----------------|-----------------|--------------|---------------|--------------|--------------|--------|
| | | | QP | AV | | QP | QP | QP | | | | |
| 43.952 | V | Stable | 49 | | -18.2 | 30.8 | 40 | 9.2 | Pass | 103 | 153 | |
| 54.677 | V | Stable | 56.8 | | -23.8 | 33 | 40 | 7 | Pass | 102 | 159 | |
| 59.546 | V | Stable | 57.8 | | -24.1 | 33.7 | 40 | 6.3 | Pass | 119 | 101 | |

| DATA SHEET | | Date | 16-Dec-13 |
|------------|--|-----------|------------|
| Model | Circuit used for measurement | Temp. | 25 degreeC |
| Test | EMI Line conduction & Radiated emission | Humid. | 40 %RH |
| | | Tested by | S.Minamide |

1. Line conduction



2. Radiated emission



Conditions

Test: EMI

Model Name: TUHS3F□□

○ Photographs of Test Set-Up

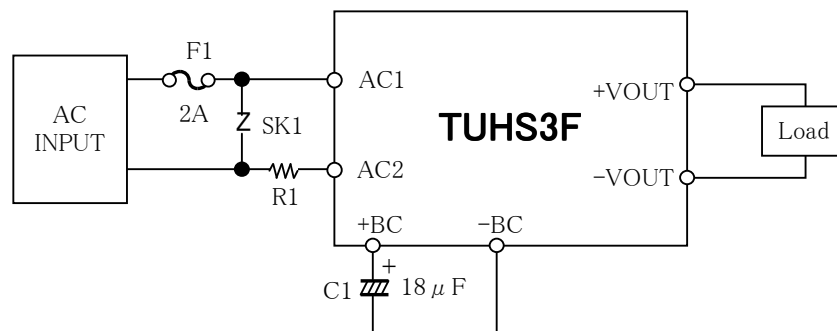
LINE CONDUCTION



RADIATED EMISSION



○ Test circuit



F1: SLT250V2A (Nippon Seisen)

R1: 1K100JA (TAMURA THERMAL DEVICE)

SK1: TND10V-511K (NIPPON CHEMI-CON)

2A

10Ω

Fig.1 Testing circuitry