

Date : Oct.2,2023

Temperature increase of main components: 主要部品温度上昇

Model : TEPS45F

1. Conditions

- (1) Input :AC 85 ~ 264 [V]
 (2) Output :Rated output *Derating is required at AC85~90[V] input.
 (3) Mounting method :Shown as Fig.1.1

2. Result

No.	Parts name	Symbol No.	Increase (ΔT) [deg]			Rated temp. [°C]	Reference
			5V	12V	24V		
1	Rectifier (Input)	SS101	72	79	75	150	Junction Temp.
2	Input Capacitor	C111	44	46	42	105	
3	Input Choke coil	L111	59	63	60	125	
4	Switching transistor	TR501	84	81	70	150	Junction Temp.
5	Rectifying transistor (Output)	TR601	74	68	59	175	Junction Temp.
6	Output Choke coil	L701	59	50	42	125	
7	Output Capacitor	C701	32	28	24	125	
8							
9							
10							
11							
12							
13							
14							
15							
16							
17							
18							
19							
20							

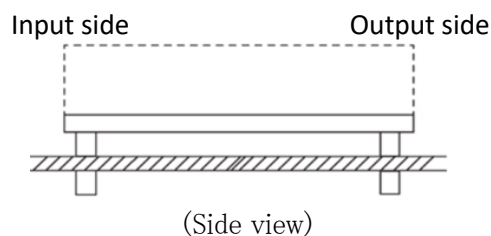


Fig.1.1 Mounting method
(Nomal position)

*All information presented herein are not guaranteed.

*本資料は参考資料であり、その内容を保証するものではありません。