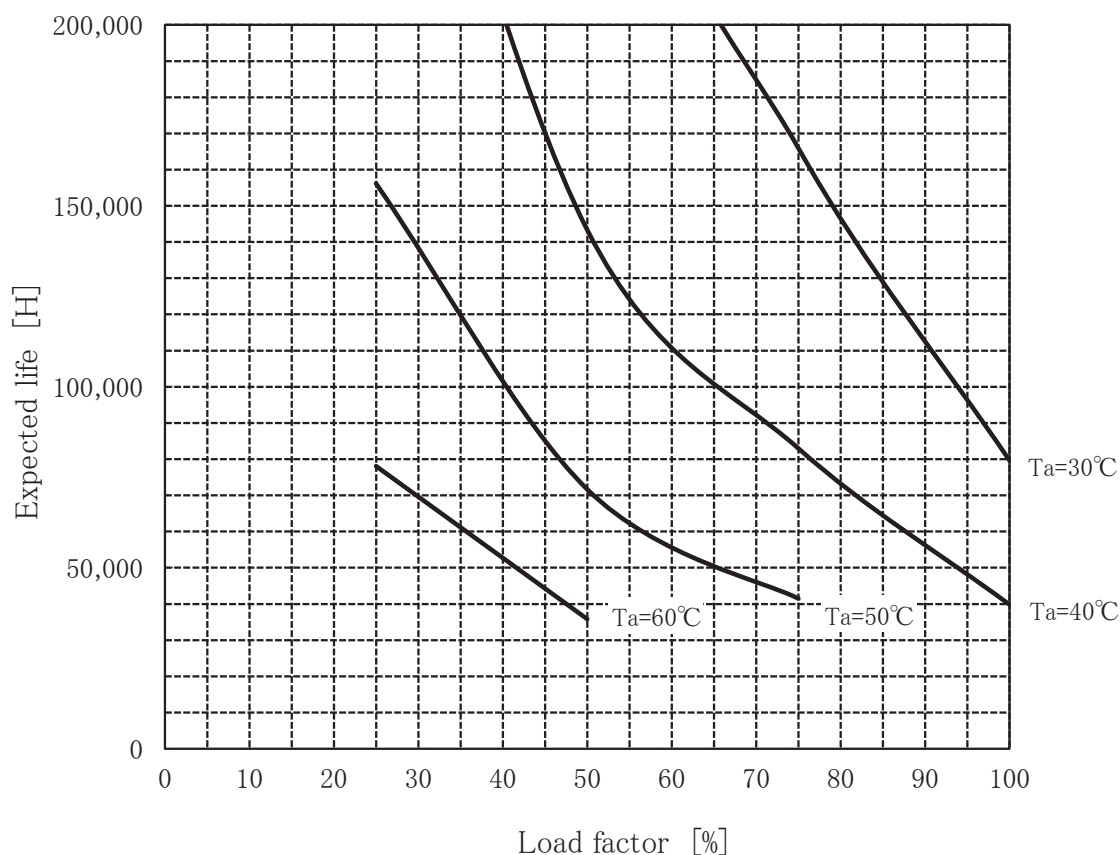


## TECS65F-24 Expected Life : 推定寿命



•Above expected life time is calculated according our calculation standard.

上記推定寿命は、当社算出基準に従い算出したものです。

•Over the area of 100,000 hours, the degradation of sealing rubber, etc., is not included in the calculation.

10万時間以上の領域では、封ロム等の劣化等の影響は、計算式には含まれていません。

## Conditions

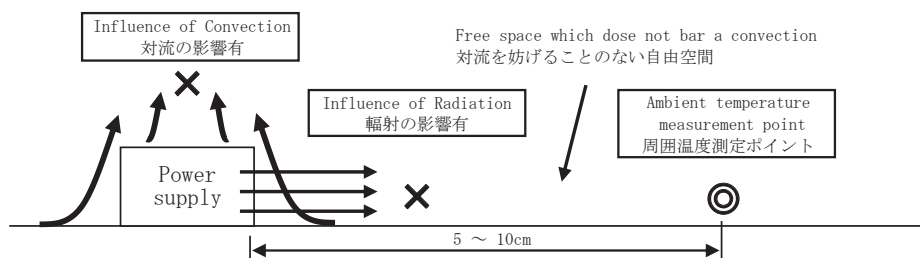
(1) Input voltage 90 ~ 264VAC 60Hz

(2) Output voltage  
Output current

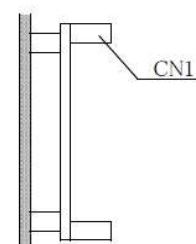
DC OUTPUT	Load factor			
	100%	75%	50%	25%
24V	2.75A	2.06A	1.37A	0.68A

(3) Cooling method Convection

(4) Mounting method Refer below



With the ambient temperature of graph, it measures in the environment of a figure.  
グラフの周囲温度とは、図の環境で測定したものです。



Mounting method (D)