

TEST DATA OF TAH-30-□□□

Noise Filter

Sep. 11 , 2017

Approved by : Tadayuki Noda
Tadayuki Noda Design Manager

Prepared by : Issei Okuno
Issei Okuno Design Engineer

COSEL CO.,LTD.



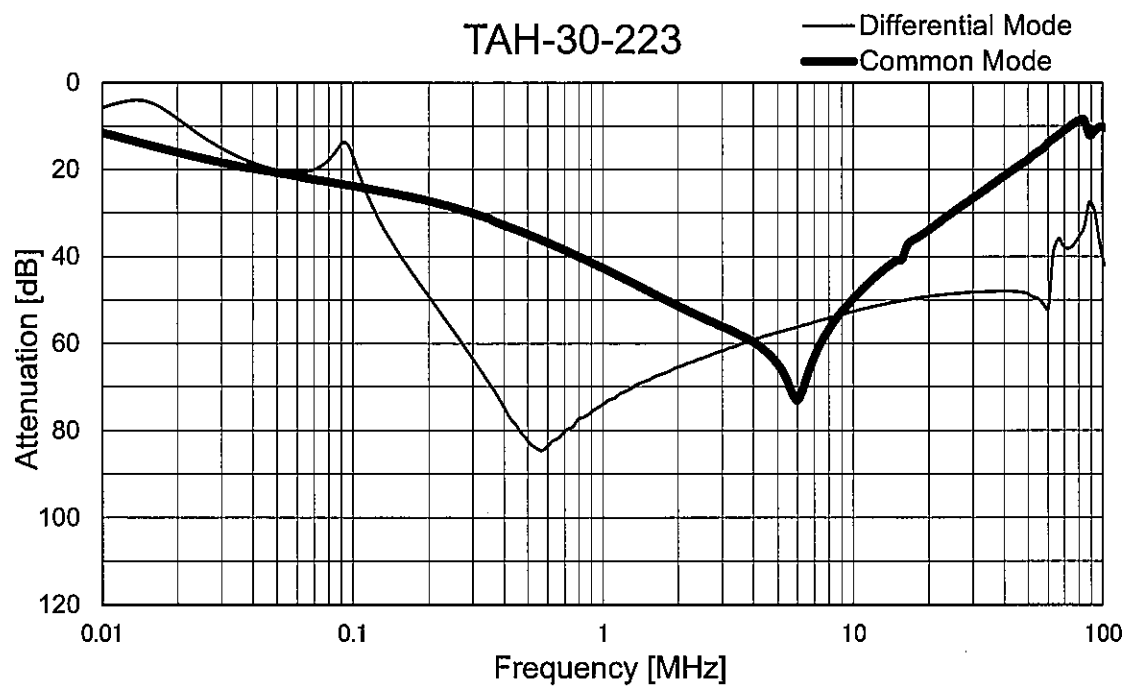
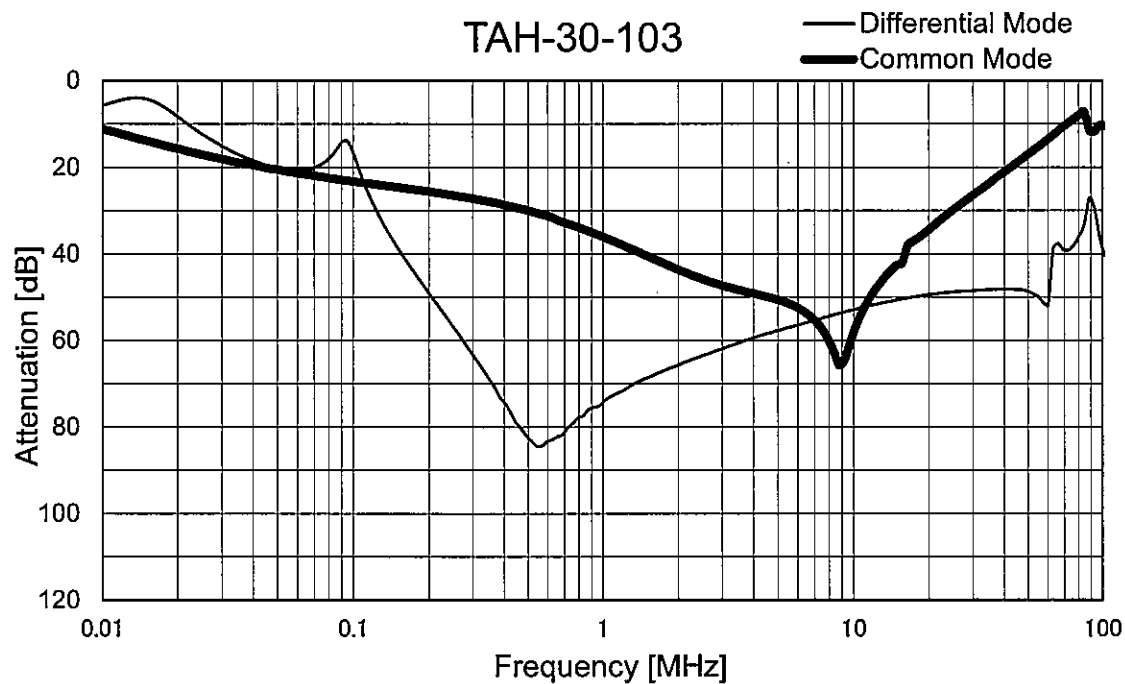
CONTENTS

1.Attenuation Characteristics	1
2.Leakage Current	3
3.Figure of Testing Circuitry	4
(Final Page 4)	

COSEL

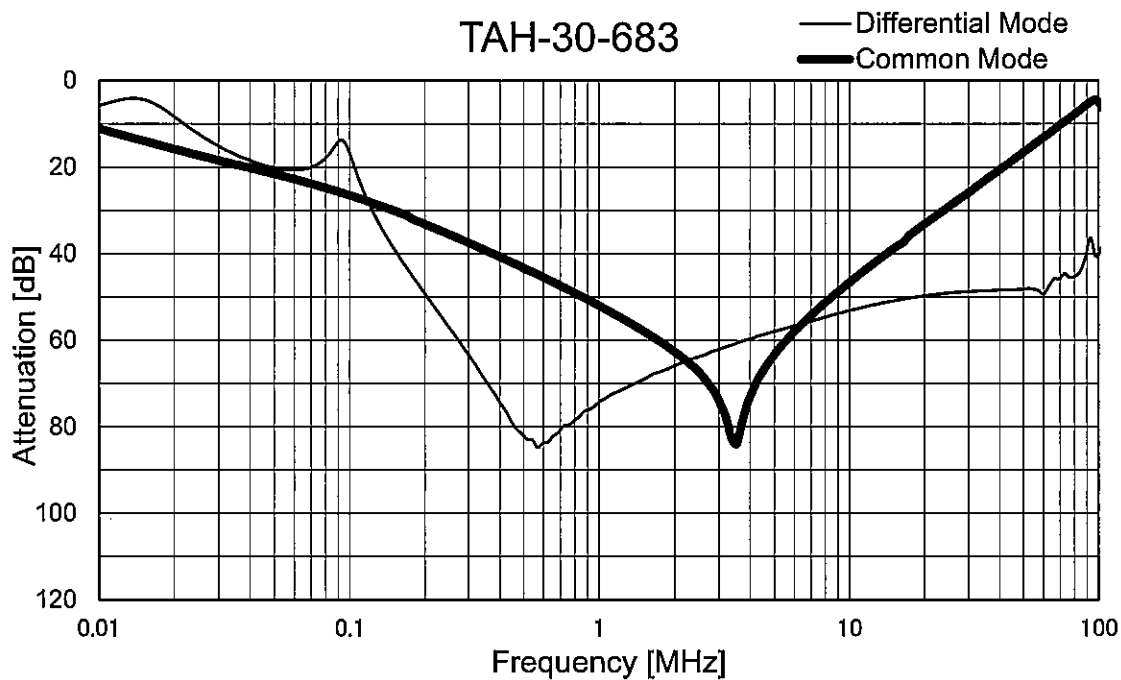
Model	TAH-30-□□□
Item	Attenuation Characteristics
Object	_____

Temperature 25°C
Testing Circuitry Figure A



COSEL

Model	TAH-30-□□□	Temperature 25°C Testing Circuitry Figure A
Item	Attenuation Characteristics	
Object	_____	





		Temperature 25°C Testing Circuitry Figure B
Model	TAH-30-□□□	
Item	Leakage Current	
Object	_____	

1.Results

[mA]

Model	Standards	Input Volt.				Note
		200[V]	250[V]	400[V]	500[V]	
TAH-30-103	UL1283	0.23	0.28	0.45	0.57	
TAH-30-223	UL1283	0.52	0.65	1.0	1.3	
TAH-30-683	UL1283	1.4	1.8	2.8	3.6	

2.Condition

Leakage current value is concluded after measuring both phases of AC input and by choosing the larger one.

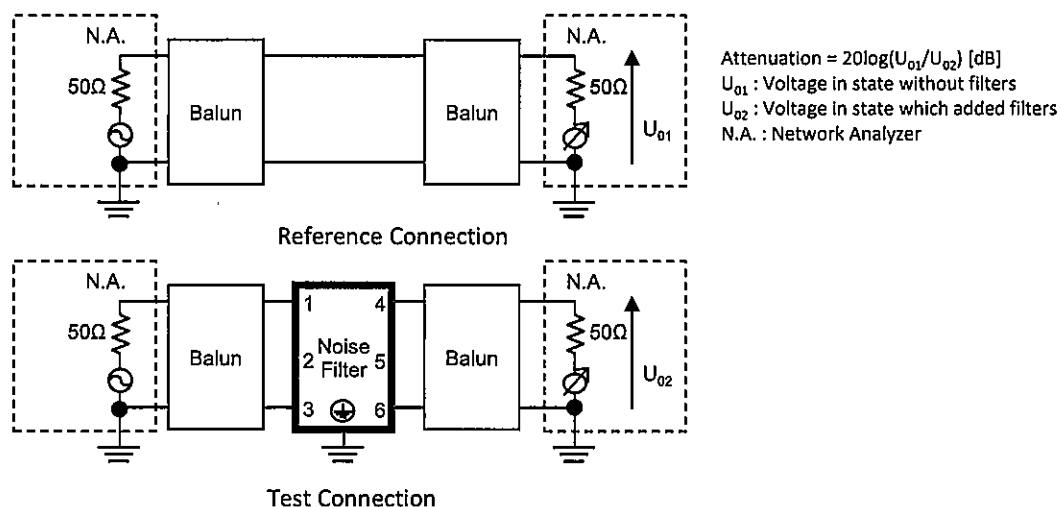


Figure A - 1 Differential mode attenuation measurement

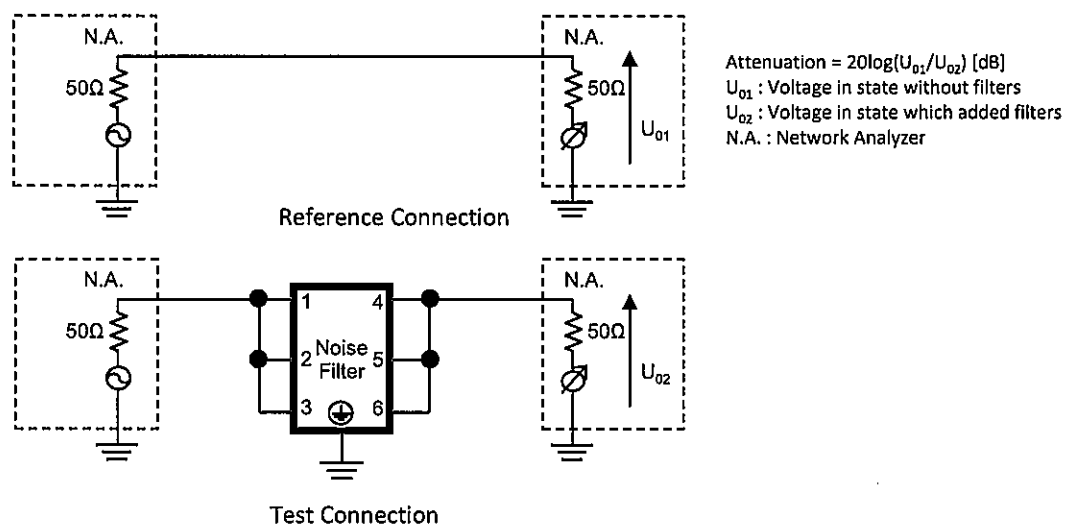


Figure A - 2 Common mode attenuation measurement

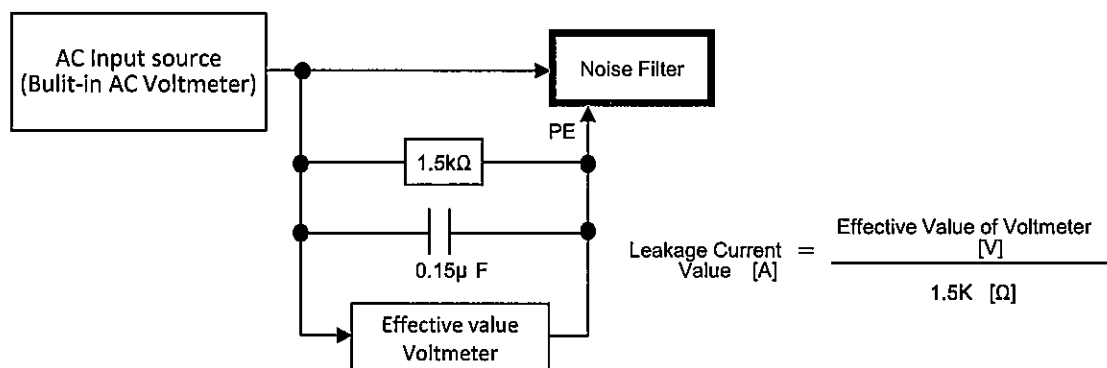


Figure B Leakage current measurement (UL1283)