

DATA SHEET							Date	21-Feb-05		
Model	SUW61215						Temp.	25 degreeC		
Test	EMI Line conduction & Radiated emission						Humid.	45 %RH		
							Tested by	Y.Hirose		
LINE CONDUCTION										
Model Name : SUW61215			Temp. : 25							
Model No. :			Humi. : 45							
Serial No. :			Date : 2005/2/21 16:07							
Points : 3			Test Equip. : R3132,ESPC							
Detector : PEAK/QP/Ave.			Comment : Y.Hirose							
Line Mode : VA/VB			+15V0.2A							
Power Supply : DC 12V			-15V0.2A							
Limit1: [EN 55022] Class A(QP)										
Limit2: [EN 55022] Class A(Ave.)										
							Limit1(QP) Limit2(Ave.) VA(PEAK) VB(PEAK) VA(QP) VA(Ave.) VB(QP) VB(Ave.)			
							DC 12V +15V0.2A -15V0.2A			
Frequency [MHz]	Meter Reading (Ave.) [dBuV]	Meter Reading (QP) [dBuV]	Factor [dB]	Level(Ave.) [dBuV]	Level(QP) [dBuV]	Line	Limit(Ave.) [dBuV]	Limit(QP) [dBuV]	Margin(Ave.) [dB]	Margin(QP) [dB]
14.4813	14.4	22.9	10.2	24.6	33.1	VA	60	73	35.4	39.9
0.3617	44.6	44.2	9.8	54.4	54	VB	66	79	11.6	25
14.0988	17.4	24.3	10.2	27.6	34.5	VB	60	73	32.4	38.5
RADIATED EMISSION										
Model Name : SUW61215			Temp. : 25							
Model No. :			Humi. : 45							
Serial No. :			Date : 2005/2/21 16:47							
Points : 3			Test Equip. : R3132,ESPC							
Detector : PEAK/QP			Comment : Y.Hirose							
Polarization : Hori. & Vert.			+15V0.2A							
Power Supply : DC 12V			-15V0.2A							
Limit: [EN 55022] Class A<3m>										
							Limit(QP) Horizontal(PEAK) Vertical(PEAK) Horizontal(QP) Vertical(QP)			
							DC 12V +15V0.2A -15V0.2A			
Frequency [MHz]	MeterReading (QP) [dBuV]	Ant. Type	Antenna Factor [dB/m]	Cable & Preamp [dB]	Level(QP) [dBuV/m]	Angle [°]	Height [cm]	Polar.	Limit [dBuV/m]	Margin [dB]
123.01	36.6	BL	11	-31.7	15.9	170	129	Hori.	50	34.1
30.031	36.2	BL	18.2	-32.3	22.1	341	114	Vert.	50	27.9
206.594	41.5	BL	8.6	-31.3	18.8	24	105	Vert.	50	31.2

COSEL

Conditions

Test : EMI
Model Name : SUS/SUW 612□□

○Photographs of Test Set-Up

LINE CONDUCTION



RADIATED EMISSION



○Testing circuitry

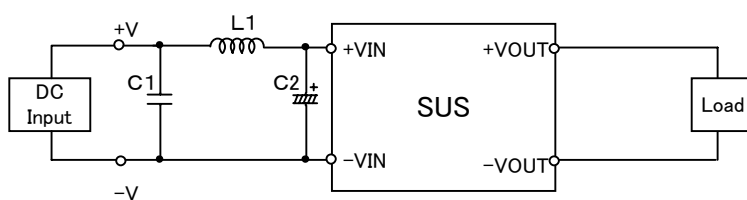


Fig.1 Testing circuitry 1

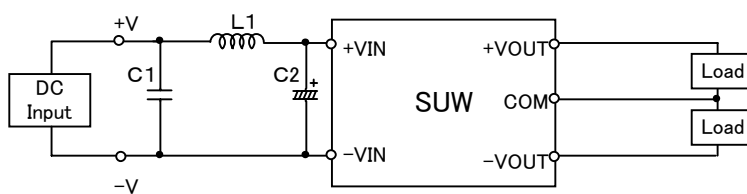


Fig.2 Testing circuitry 2

L1 :	1 μ H	CY3H-1R0	(KORIN ELECTRONICS)
C1 :	25V 1 μ F	C3216JB1E105M	(TDK)
C2 :	25V 220 μ F	LXZ25VB220(M)	(NIPPON CHEMI-COM)