

Date	17-May-05
Temp.	25degreeC
Humid.	45 %RH
Tested by	T.Ohara

Vin : DC24V  
Iout : 0.05A

Frequency [MHz]	Meter Reading (Ave.)[dBuV]	Meter Reading (QP)[dBuV]	Factor [dB]	Level(Ave.) [dBuV]	Level(QP) [dBuV]	Line	Limit(Ave.) [dBuV]	Limit(QP) [dBuV]	Margin(Ave.) [dB]	Margin(QP) [dB]
1.789	38.4	37.8	9.9	48.3	47.7	VA	60	73	11.7	25.3
6.2655	30.8	34.8	10	40.8	44.8	VA	60	73	19.2	28.2
0.4467	40.5	40.1	9.9	50.4	50	VB	66	79	15.6	29

Vin : DC24V  
Iout : 0.05A

[illegible]

# COSEL

## Conditions

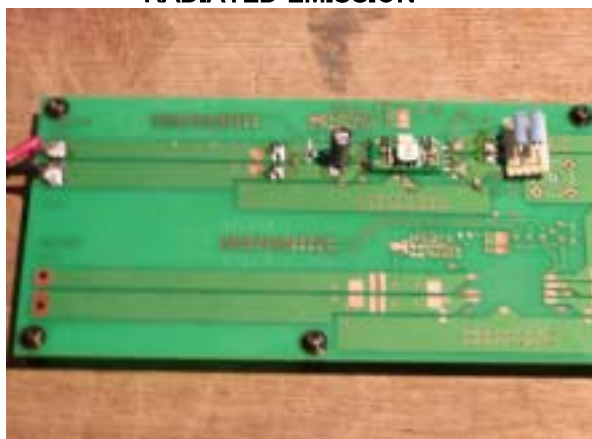
Test : EMI  
Model Name : SUS/SUW 1R524

○Photographs of Test Set-Up

### LINE CONDUCTION



### RADIATED EMISSION



○Testing circuitry

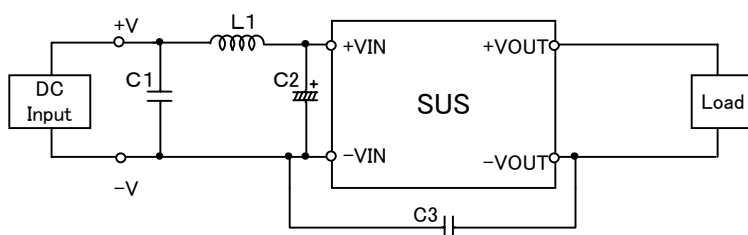


Fig.1 Testing circuitry 1

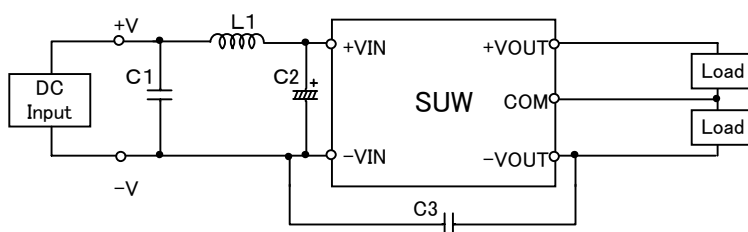


Fig.2 Testing circuitry 2

L1 :	10 $\mu$ H	GLF2518T100K	(TDK)
C1 :	50V 0.47 $\mu$ F	C2012JB1H474K	(TDK)
C2 :	50V 33 $\mu$ F	UPW1H330M	(NICHICON)
C3 :	1000V 100pF	GRM31AR33A101K	(MURATA)