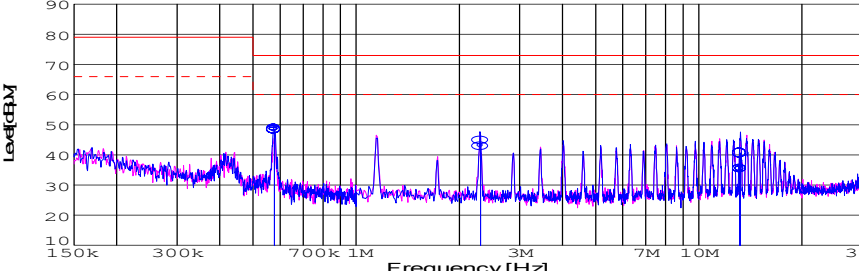
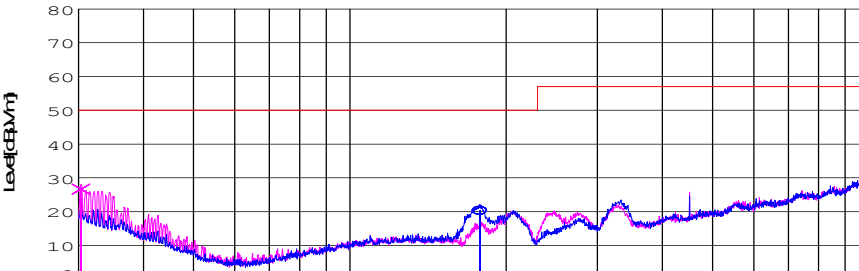


DATA SHEET							Date	17-May-05																																														
Model	SUW1R51215						Temp.	25degreeC																																														
Test	EMI Line conduction & Radiated emission						Humid.	45 %RH																																														
							Tested by	T.Ohara																																														
LINE CONDUCTION																																																						
Model Name : SUW1R51215			Temp. : 25degreeC																																																			
Model No. : -			Humi. : 45%																																																			
Serial No. : -			Date : 2004/10/7 19:42																																																			
Points : 3			Test Equip. : R3132,ESPC																																																			
Detector : PEAK/QP/Ave.			Load Line : 10mm																																																			
Line Mode : VA			Comment : -																																																			
Power Supply : DC 12V																																																						
Limit1: [EN 55022] Class A(QP)																																																						
Limit2: [EN 55022] Class A(Ave.)																																																						
							Limit1(QP) ——— Limit2(Ave.) - - - VA(PEAK) ——— VB(PEAK) ——— VA(QP) ——— VA(Ave.) ———																																															
							Vin : DC12V Iout : 0.05A																																															
<table><tr><th>Frequency [MHz]</th><th>Meter Reading (Ave.) [dBuV]</th><th>Meter Reading (QP) [dBuV]</th><th>Factor [dB]</th><th>Level(Ave.) [dBuV]</th><th>Level(QP) [dBuV]</th><th>Line</th><th>Limit(Ave.) [dBuV]</th><th>Limit(QP) [dBuV]</th><th>Margin(Ave.) [dB]</th><th>Margin(QP) [dB]</th></tr><tr><td>0.5772</td><td>38.5</td><td>38.2</td><td>9.9</td><td>48.4</td><td>48.1</td><td>VA</td><td>60</td><td>73</td><td>11.6</td><td>24.9</td></tr><tr><td>2.3058</td><td>33</td><td>34.8</td><td>9.9</td><td>42.9</td><td>44.7</td><td>VA</td><td>60</td><td>73</td><td>17.1</td><td>28.3</td></tr><tr><td>13.2219</td><td>25.2</td><td>30.4</td><td>10.2</td><td>35.4</td><td>40.6</td><td>VA</td><td>60</td><td>73</td><td>24.6</td><td>32.4</td></tr></table>											Frequency [MHz]	Meter Reading (Ave.) [dBuV]	Meter Reading (QP) [dBuV]	Factor [dB]	Level(Ave.) [dBuV]	Level(QP) [dBuV]	Line	Limit(Ave.) [dBuV]	Limit(QP) [dBuV]	Margin(Ave.) [dB]	Margin(QP) [dB]	0.5772	38.5	38.2	9.9	48.4	48.1	VA	60	73	11.6	24.9	2.3058	33	34.8	9.9	42.9	44.7	VA	60	73	17.1	28.3	13.2219	25.2	30.4	10.2	35.4	40.6	VA	60	73	24.6	32.4
Frequency [MHz]	Meter Reading (Ave.) [dBuV]	Meter Reading (QP) [dBuV]	Factor [dB]	Level(Ave.) [dBuV]	Level(QP) [dBuV]	Line	Limit(Ave.) [dBuV]	Limit(QP) [dBuV]	Margin(Ave.) [dB]	Margin(QP) [dB]																																												
0.5772	38.5	38.2	9.9	48.4	48.1	VA	60	73	11.6	24.9																																												
2.3058	33	34.8	9.9	42.9	44.7	VA	60	73	17.1	28.3																																												
13.2219	25.2	30.4	10.2	35.4	40.6	VA	60	73	24.6	32.4																																												
RADIATED EMISSION																																																						
Model Name : SUW1R51215			Temp. : 25degreeC																																																			
Model No. : -			Humi. : 45%																																																			
Serial No. : -			Date : 2005/2/10 18:01																																																			
Points : 2			Test Equip. : R3132,ESPC																																																			
Detector : PEAK/QP			Load Line : 10mm																																																			
Polarization : Hori. & Vert.			Comment : -																																																			
Power Supply : DC 12V																																																						
Limit: [EN 55022] Class A<3m>																																																						
							Limit(QP) ——— Horizontal(PEAK) ——— Vertical(PEAK) ——— Horizontal(QP) ——— Vertical(QP) ———																																															
							Vin : DC12V Iout : 0.05A																																															
<table><tr><th>Frequency [MHz]</th><th>MeterReading (QP) [dBuV]</th><th>Ant. Type</th><th>Antenna Factor [dB/m]</th><th>Cable & Preamp [dB]</th><th>Level(QP) [dBuV/m]</th><th>Angle [°]</th><th>Height [cm]</th><th>Polar.</th><th>Limit [dBuV/m]</th><th>Margin [dB]</th></tr><tr><td>178.303</td><td>43.3</td><td>BL</td><td>8.5</td><td>-31.4</td><td>20.4</td><td>356</td><td>158</td><td>Hori.</td><td>50</td><td>29.6</td></tr><tr><td>30.317</td><td>40.9</td><td>BL</td><td>18.1</td><td>-32.3</td><td>26.7</td><td>256</td><td>103</td><td>Vert.</td><td>50</td><td>23.3</td></tr></table>											Frequency [MHz]	MeterReading (QP) [dBuV]	Ant. Type	Antenna Factor [dB/m]	Cable & Preamp [dB]	Level(QP) [dBuV/m]	Angle [°]	Height [cm]	Polar.	Limit [dBuV/m]	Margin [dB]	178.303	43.3	BL	8.5	-31.4	20.4	356	158	Hori.	50	29.6	30.317	40.9	BL	18.1	-32.3	26.7	256	103	Vert.	50	23.3											
Frequency [MHz]	MeterReading (QP) [dBuV]	Ant. Type	Antenna Factor [dB/m]	Cable & Preamp [dB]	Level(QP) [dBuV/m]	Angle [°]	Height [cm]	Polar.	Limit [dBuV/m]	Margin [dB]																																												
178.303	43.3	BL	8.5	-31.4	20.4	356	158	Hori.	50	29.6																																												
30.317	40.9	BL	18.1	-32.3	26.7	256	103	Vert.	50	23.3																																												

COSEL

Conditions

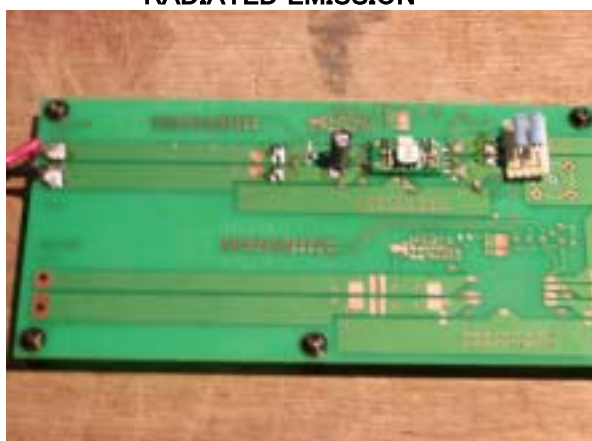
Test : EMI
Model Name : SUS/SUW 1R512

○Photographs of Test Set-Up

LINE CONDUCTION



RADIATED EMISSION



○Testing circuitry

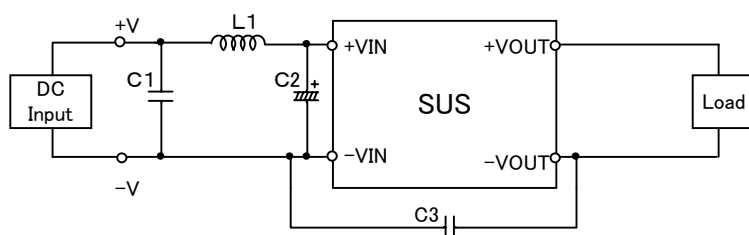


Fig.1 Testing circuitry 1

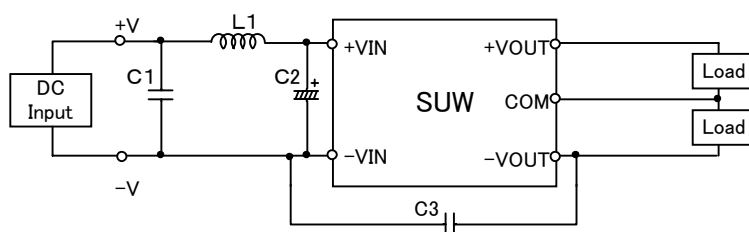


Fig.2 Testing circuitry 2

L1 :	4.7 μ H	GLF2518T4R7M	(TDK)
C1 :	25V 1 μ F	C2012JB1E105K	(TDK)
C2 :	25V 47 μ F	UPW1E470M	(NICHICON)
C3 :	1000V 100pF	GRM31AR33A101K	(MURATA)