

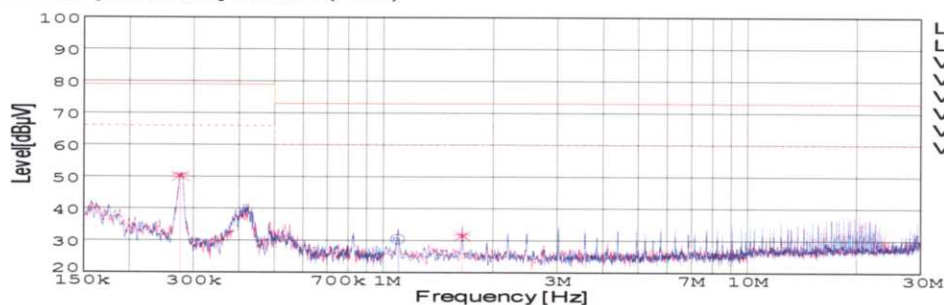
DATA SHEET

DATA SHEET		Date	12-Mar-05
Model	SUW101215	Temp.	25degreeC
Test	EMI Line conduction & Radiated emission	Humid.	45 %RH
		Tested by	C.Makino

LINE CONDUCTION

Model Name : SUW101215
 Model No. :
 Serial No. :
 Points : 3
 Detector : PEAK/QP/Ave.
 Line Mode : VA/VB
 Power Supply : DC 12V
 Limit1: [EN 55022] Class A(QP)
 Limit2: [EN 55022] Class A(Ave.)

Temp. : 25degreeC
 Humi. : 45%
 Date : 2005/3/12 11:57
 Test Equip. : R3132,ESPC
 Load Line : 50mm
 Comment : C.Makino



Limit1(QP)
 Limit2(Ave.)
 VA(PEAK)
 VB(PEAK)
 VA(QP)
 VA(Ave.)
 VB(QP)
 VB(Ave.)

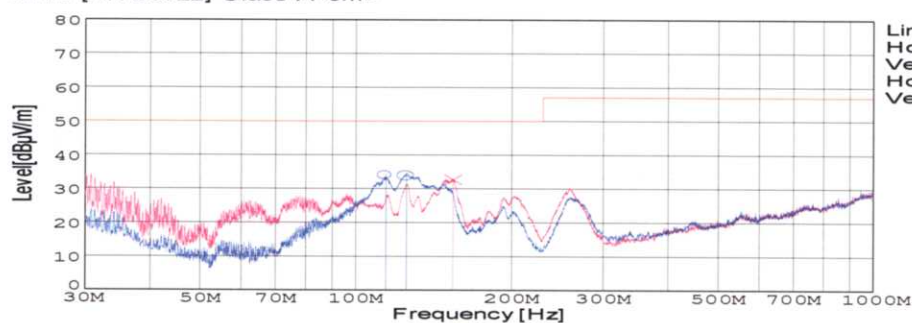
Vin: DC12V
 Iout: 0.35A

Frequency [MHz]	Meter Reading (Ave.) [dBuV]	Meter Reading (QP) [dBuV]	Factor [dB]	Level(Ave.) [dBuV]	Level(QP) [dBuV]	Line	Limit(Ave.) [dBuV]	Limit(QP) [dBuV]	Margin(Ave.) [dB]	Margin(QP) [dB]
1.0997	20.5	20.6	9.9	30.4	30.5	VA	60	73	29.6	42.5
0.2752	40.8	40.3	9.8	50.6	50.1	VB	66	79	15.4	28.9
1.6495	21.8	21.6	9.9	31.7	31.5	VB	60	73	28.3	41.5

RADIATED EMISSION

Model Name : SUW101215
 Model No. :
 Serial No. :
 Points : 3
 Detector : PEAK/QP
 Polarization : Hori. & Vert.
 Power Supply : DC 12V
 Limit: [EN 55022] Class A<3m>

Temp. : 25degreeC
 Humi. : 45%
 Date : 2005/3/15 16:24
 Test Equip. : R3132,ESPC
 Load Line : 50mm
 Comment : C.Makino



Limit(QP)
 Horizontal(PEAK)
 Vertical(PEAK)
 Horizontal(QP)
 Vertical(QP)

Vin: DC12V
 Iout: 0.35A

Frequency [MHz]	Meter Reading (QP) [dBuV]	Ant. Type	Antenna Factor [dB/m]	Cable & Preamp [dB]	Level(QP) [dBuV/m]	Angle [°]	Height [cm]	Polar.	Limit [dBuV/m]	Margin [dB]
125.402	54.5	BL	11.1	-31.6	34	211	139	Hori.	50	16
114.424	55	BL	10.8	-31.7	34.1	208	134	Hori.	50	15.9
154.301	54	BL	10.3	-31.5	32.8	96	158	Vert.	50	17.2



Conditions

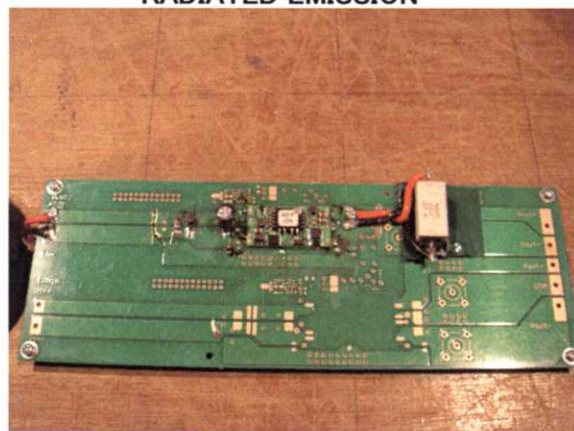
Test : EMI
Model Name : SUS/SUW1012

○Photographs of Test Set-Up

LINE CONDUCTION



RADIATED EMISSION



○Testing circuitry

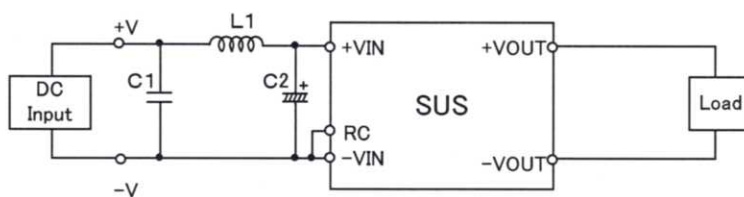


Fig.1 Testing circuitry 1

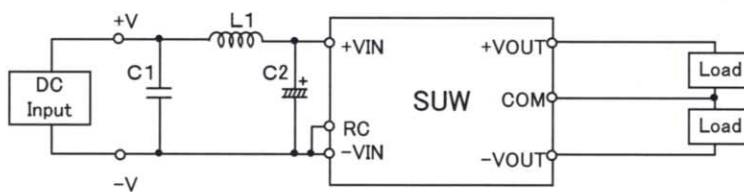


Fig.2 Testing circuitry 2

L1 : 1 μ H	CI4-1R0	(KORIN ELECTRONICS)
C1: 25V 10 μ F	C3225JB1E106M	(TDK)
C2: 25V 220 μ F	UPW1E221M	(NICHICON)