

DATA SHEET							Date	24-Dec-08																																														
Model	SUTW31215						Temp.	25 degreeC																																														
Test	EMI Line conduction & Radiated emission						Humid.	45 %RH																																														
							Tested by	D.Joboji																																														
LINE CONDUCTION																																																						
Model Name : SUTW31215			Temp. : 25																																																			
Model No. :			Humi. : 45																																																			
Serial No. :			Date : 2008/12/24 14:46																																																			
Points : 3			Test Equip. : R3132,ESPC																																																			
Detector : PEAK/QP/Ave.			Load Line : 10mm																																																			
Line Mode : VA/VB			Comment :																																																			
Power Supply : DC 12V																																																						
Limit1: [EN 55022] Class A(QP)																																																						
Limit2: [EN 55022] Class A(Ave.)																																																						
							Limit1(QP)		—																																													
							Limit2(Ave.)		- - -																																													
							VA(PEAK)		—																																													
							VB(PEAK)		—																																													
							VA(QP)		○																																													
							VA(Ave.)		○																																													
							VB(QP)		×																																													
							VB(Ave.)		×																																													
							DC 12V																																															
<table><tr><th>Frequency [MHz]</th><th>Meter Reading (Ave.) [dBuV]</th><th>Meter Reading (QP) [dBuV]</th><th>Factor [dB]</th><th>Level(Ave.) [dBuV]</th><th>Level(QP) [dBuV]</th><th>Line</th><th>Limit(Ave.) [dBuV]</th><th>Limit(QP) [dBuV]</th><th>Margin(Ave.) [dB]</th><th>Margin(QP) [dB]</th></tr><tr><td>0.1793</td><td>25</td><td>31</td><td>9.8</td><td>34.8</td><td>40.8</td><td>VA</td><td>66</td><td>79</td><td>31.2</td><td>38.2</td></tr><tr><td>0.2796</td><td>46.4</td><td>45.9</td><td>9.8</td><td>56.2</td><td>55.7</td><td>VA</td><td>66</td><td>79</td><td>9.8</td><td>23.3</td></tr><tr><td>12.1173</td><td>12.4</td><td>20.2</td><td>10.1</td><td>22.5</td><td>30.3</td><td>VB</td><td>60</td><td>73</td><td>37.5</td><td>42.7</td></tr></table>											Frequency [MHz]	Meter Reading (Ave.) [dBuV]	Meter Reading (QP) [dBuV]	Factor [dB]	Level(Ave.) [dBuV]	Level(QP) [dBuV]	Line	Limit(Ave.) [dBuV]	Limit(QP) [dBuV]	Margin(Ave.) [dB]	Margin(QP) [dB]	0.1793	25	31	9.8	34.8	40.8	VA	66	79	31.2	38.2	0.2796	46.4	45.9	9.8	56.2	55.7	VA	66	79	9.8	23.3	12.1173	12.4	20.2	10.1	22.5	30.3	VB	60	73	37.5	42.7
Frequency [MHz]	Meter Reading (Ave.) [dBuV]	Meter Reading (QP) [dBuV]	Factor [dB]	Level(Ave.) [dBuV]	Level(QP) [dBuV]	Line	Limit(Ave.) [dBuV]	Limit(QP) [dBuV]	Margin(Ave.) [dB]	Margin(QP) [dB]																																												
0.1793	25	31	9.8	34.8	40.8	VA	66	79	31.2	38.2																																												
0.2796	46.4	45.9	9.8	56.2	55.7	VA	66	79	9.8	23.3																																												
12.1173	12.4	20.2	10.1	22.5	30.3	VB	60	73	37.5	42.7																																												
RADIATED EMISSION																																																						
Model Name : SUTW31215			Temp. : 25																																																			
Model No. :			Humi. : 45																																																			
Serial No. :			Date : 2008/12/24 14:56																																																			
Points : 2			Test Equip. : R3132,ESPC																																																			
Detector : PEAK/QP			Load Line : 10mm																																																			
Polarization : Vertical			Comment :																																																			
Power Supply : DC 12V																																																						
Limit: [EN 55022] Class A<3m>																																																						
							Limit(QP)		—																																													
							Horizontal(PEAK)		—																																													
							Vertical(PEAK)		—																																													
							Vertical(QP)		×																																													
							DC 12V																																															
<table><tr><th>Frequency [MHz]</th><th>Meter Reading (QP) [dBuV]</th><th>Ant. Type</th><th>Antenna Factor [dB/m]</th><th>Cable & Preamp [dB]</th><th>Level(QP) [dBuV/m]</th><th>Angle [°]</th><th>Height [cm]</th><th>Polar.</th><th>Limit [dBuV/m]</th><th>Margin [dB]</th></tr><tr><td>974.839</td><td>23.4</td><td>BL</td><td>25.3</td><td>-29.3</td><td>19.4</td><td>205</td><td>115</td><td>Vert.</td><td>57</td><td>37.6</td></tr><tr><td>30.154</td><td>29</td><td>BL</td><td>18.1</td><td>-32.3</td><td>14.8</td><td>285</td><td>114</td><td>Vert.</td><td>50</td><td>35.2</td></tr></table>											Frequency [MHz]	Meter Reading (QP) [dBuV]	Ant. Type	Antenna Factor [dB/m]	Cable & Preamp [dB]	Level(QP) [dBuV/m]	Angle [°]	Height [cm]	Polar.	Limit [dBuV/m]	Margin [dB]	974.839	23.4	BL	25.3	-29.3	19.4	205	115	Vert.	57	37.6	30.154	29	BL	18.1	-32.3	14.8	285	114	Vert.	50	35.2											
Frequency [MHz]	Meter Reading (QP) [dBuV]	Ant. Type	Antenna Factor [dB/m]	Cable & Preamp [dB]	Level(QP) [dBuV/m]	Angle [°]	Height [cm]	Polar.	Limit [dBuV/m]	Margin [dB]																																												
974.839	23.4	BL	25.3	-29.3	19.4	205	115	Vert.	57	37.6																																												
30.154	29	BL	18.1	-32.3	14.8	285	114	Vert.	50	35.2																																												

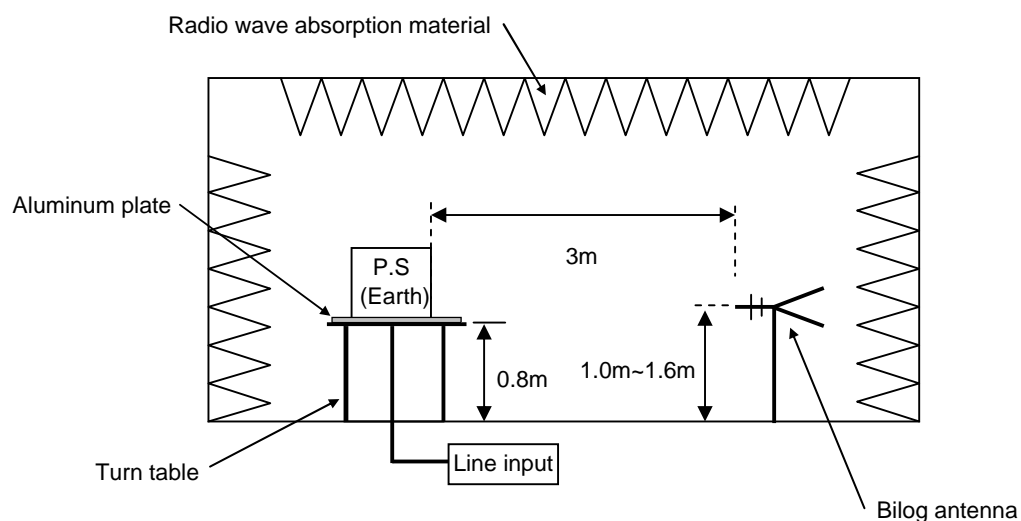
DATA SHEET

Model	Circuit used for measurement
Test	EMI Line conduction & Radiated emission

1. Line conduction



2. Radiated emission





Conditions

Test : EMI
Model Name : SUTS/SUTW 312□□

○Photographs of Test Set-Up

LINE CONDUCTION



RADIATED EMISSION



○Testing circuitry

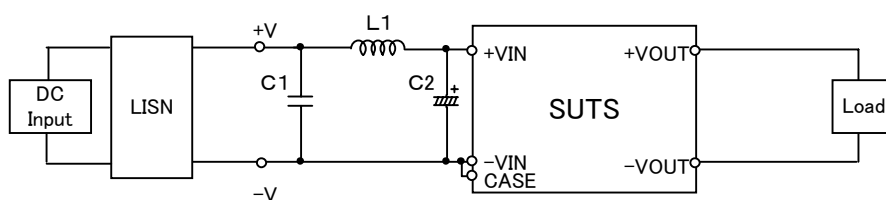


Fig.1 Testing circuitry 1

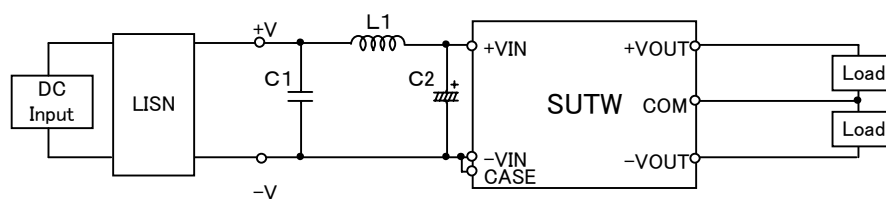


Fig.2 Testing circuitry 2

L1 :	4.7 μ H	CY3H-4R7	(KORIN ELECTRONICS)
C1 :	25V 1 μ F	C2012JB1E105K	(TDK)
C2 :	25V 100 μ F	UPW1E101M	(NICHICON)