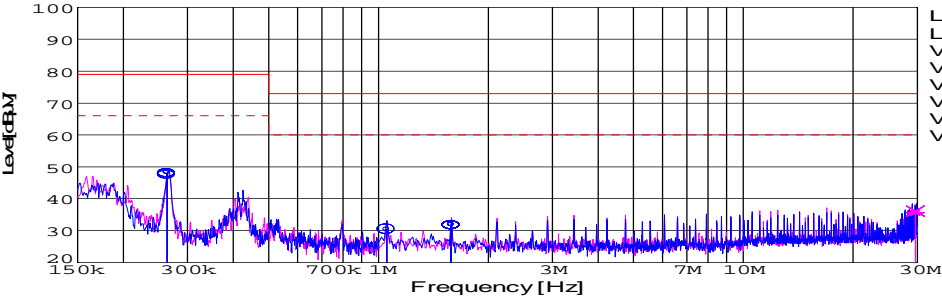
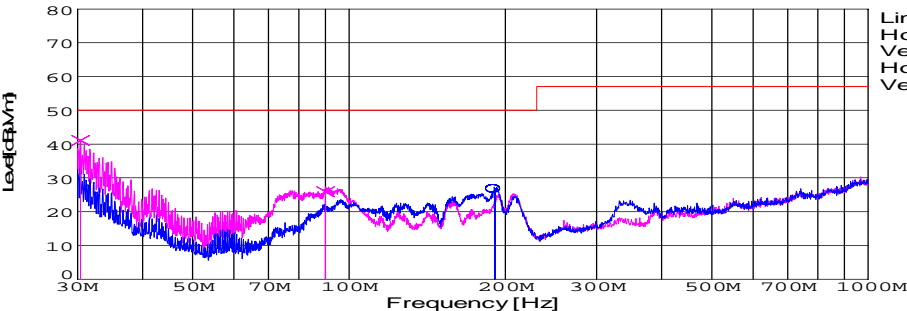


DATA SHEET							Date	27-Jan-09																																																									
Model	SUTW102415						Temp.	25 degreeC																																																									
Test	EMI Line conduction & Radiated emission						Humid.	45 %RH																																																									
							Tested by	D.Joboji																																																									
LINE CONDUCTION																																																																	
Model Name : SUTW102415			Temp. : 25																																																														
Model No. :			Humi. : 45																																																														
Serial No. :			Date : 2009/1/27 14:25																																																														
Points : 4			Test Equip. : R3132,ESPC																																																														
Detector : PEAK/QP/Ave.			Load Line : 50mm																																																														
Line Mode : VA/VB			Comment :																																																														
Power Supply : DC 24V																																																																	
Limit1: [EN 55022] Class A(QP)																																																																	
Limit2: [EN 55022] Class A(Ave.)																																																																	
							Limit1(QP) Limit2(Ave.) VA(PEAK) VB(PEAK) VA(QP) VA(Ave.) VB(QP) VB(Ave.) DC 24V																																																										
<table><tr><th>Frequency [MHz]</th><th>Meter Reading (Ave.) [dBuV]</th><th>Meter Reading (QP) [dBuV]</th><th>Factor [dB]</th><th>Level(Ave.) [dBuV]</th><th>Level(QP) [dBuV]</th><th>Line</th><th>Limit(Ave.) [dBuV]</th><th>Limit(QP) [dBuV]</th><th>Margin(Ave.) [dB]</th><th>Margin(QP) [dB]</th></tr><tr><td>0.2639</td><td>38.3</td><td>37.9</td><td>9.8</td><td>48.1</td><td>47.7</td><td>VA</td><td>66</td><td>79</td><td>17.9</td><td>31.3</td></tr><tr><td>1.0551</td><td>20.5</td><td>20.5</td><td>9.9</td><td>30.4</td><td>30.4</td><td>VA</td><td>60</td><td>73</td><td>29.6</td><td>42.6</td></tr><tr><td>1.5844</td><td>21.8</td><td>21.6</td><td>9.9</td><td>31.7</td><td>31.5</td><td>VA</td><td>60</td><td>73</td><td>28.3</td><td>41.5</td></tr><tr><td>29.5986</td><td>25.1</td><td>25.6</td><td>10.5</td><td>35.6</td><td>36.1</td><td>VB</td><td>60</td><td>73</td><td>24.4</td><td>36.9</td></tr></table>											Frequency [MHz]	Meter Reading (Ave.) [dBuV]	Meter Reading (QP) [dBuV]	Factor [dB]	Level(Ave.) [dBuV]	Level(QP) [dBuV]	Line	Limit(Ave.) [dBuV]	Limit(QP) [dBuV]	Margin(Ave.) [dB]	Margin(QP) [dB]	0.2639	38.3	37.9	9.8	48.1	47.7	VA	66	79	17.9	31.3	1.0551	20.5	20.5	9.9	30.4	30.4	VA	60	73	29.6	42.6	1.5844	21.8	21.6	9.9	31.7	31.5	VA	60	73	28.3	41.5	29.5986	25.1	25.6	10.5	35.6	36.1	VB	60	73	24.4	36.9
Frequency [MHz]	Meter Reading (Ave.) [dBuV]	Meter Reading (QP) [dBuV]	Factor [dB]	Level(Ave.) [dBuV]	Level(QP) [dBuV]	Line	Limit(Ave.) [dBuV]	Limit(QP) [dBuV]	Margin(Ave.) [dB]	Margin(QP) [dB]																																																							
0.2639	38.3	37.9	9.8	48.1	47.7	VA	66	79	17.9	31.3																																																							
1.0551	20.5	20.5	9.9	30.4	30.4	VA	60	73	29.6	42.6																																																							
1.5844	21.8	21.6	9.9	31.7	31.5	VA	60	73	28.3	41.5																																																							
29.5986	25.1	25.6	10.5	35.6	36.1	VB	60	73	24.4	36.9																																																							
RADIATED EMISSION																																																																	
Model Name : SUTW102415			Temp. : 25																																																														
Model No. :			Humi. : 45																																																														
Serial No. :			Date : 2009/1/27 14:56																																																														
Points : 3			Test Equip. : R3132,ESPC																																																														
Detector : PEAK/QP			Load Line : 50mm																																																														
Polarization : Hori. & Vert.			Comment :																																																														
Power Supply : DC 24V																																																																	
Limit: [EN 55022] Class A<3m>																																																																	
							Limit(QP) Horizontal(PEAK) Vertical(PEAK) Horizontal(QP) Vertical(QP) DC 24V																																																										
<table><tr><th>Frequency [MHz]</th><th>Meter Reading (QP) [dBuV]</th><th>Ant. Type</th><th>Antenna Factor [dB/m]</th><th>Cable & Preamp [dB]</th><th>Level(QP) [dBuV/m]</th><th>Angle [°]</th><th>Height [cm]</th><th>Polar.</th><th>Limit [dBuV/m]</th><th>Margin [dB]</th></tr><tr><td>190.786</td><td>49.7</td><td>BL</td><td>8.3</td><td>-31.3</td><td>26.7</td><td>164</td><td>155</td><td>Hori.</td><td>50</td><td>23.3</td></tr><tr><td>30.4</td><td>55.4</td><td>BL</td><td>18</td><td>-32.3</td><td>41.1</td><td>212</td><td>100</td><td>Vert.</td><td>50</td><td>8.9</td></tr><tr><td>90.105</td><td>49.2</td><td>BL</td><td>8.5</td><td>-31.8</td><td>25.9</td><td>239</td><td>111</td><td>Vert.</td><td>50</td><td>24.1</td></tr></table>											Frequency [MHz]	Meter Reading (QP) [dBuV]	Ant. Type	Antenna Factor [dB/m]	Cable & Preamp [dB]	Level(QP) [dBuV/m]	Angle [°]	Height [cm]	Polar.	Limit [dBuV/m]	Margin [dB]	190.786	49.7	BL	8.3	-31.3	26.7	164	155	Hori.	50	23.3	30.4	55.4	BL	18	-32.3	41.1	212	100	Vert.	50	8.9	90.105	49.2	BL	8.5	-31.8	25.9	239	111	Vert.	50	24.1											
Frequency [MHz]	Meter Reading (QP) [dBuV]	Ant. Type	Antenna Factor [dB/m]	Cable & Preamp [dB]	Level(QP) [dBuV/m]	Angle [°]	Height [cm]	Polar.	Limit [dBuV/m]	Margin [dB]																																																							
190.786	49.7	BL	8.3	-31.3	26.7	164	155	Hori.	50	23.3																																																							
30.4	55.4	BL	18	-32.3	41.1	212	100	Vert.	50	8.9																																																							
90.105	49.2	BL	8.5	-31.8	25.9	239	111	Vert.	50	24.1																																																							

DATA SHEET

Model	Circuit used for measurement
Test	EMI Line conduction & Radiated emission

1. Line conduction



2. Radiated emission





Conditions

Test : EMI
Model Name : SUTS/SUTW1024□□

○Photographs of Test Set-Up

LINE CONDUCTION



RADIATED EMISSION



○Testing circuitry

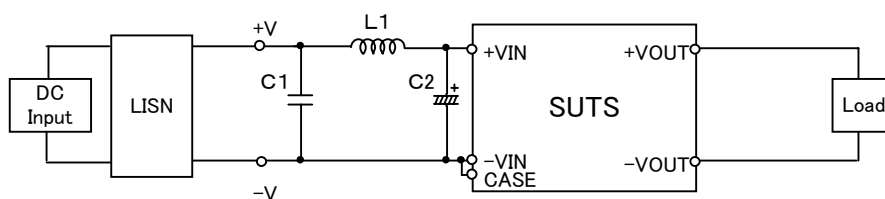


Fig.1 Testing circuitry 1

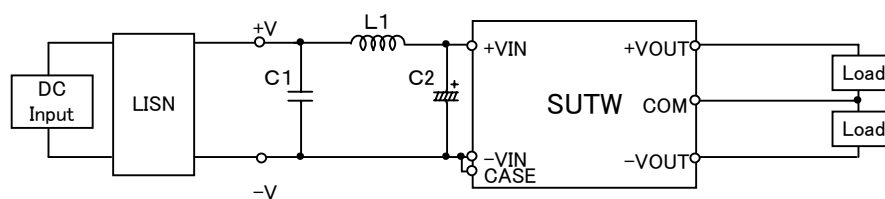


Fig.2 Testing circuitry 2

L1 : 2.2 μ H	CY3H-2R2	(KORIN ELECTRONICS)
C1: 50V 3.3 μ F	C3225JB1H335M	(TDK)
C2: 50V 100 μ F	UPM1H101M	(NICHICON)