

DATA SHEET							Date	27-Jan-09																																																									
Model	SUTW101215						Temp.	25 degreeC																																																									
Test	EMI Line conduction & Radiated emission						Humid.	45 %RH																																																									
							Tested by	D.Joboji																																																									
LINE CONDUCTION																																																																	
Model Name : SUTW101215			Temp. : 25																																																														
Model No. :			Humi. : 45																																																														
Serial No. :			Date : 2009/1/27 13:33																																																														
Points : 2			Test Equip. : R3132,ESPC																																																														
Detector : PEAK/QP/Ave.			Load Line : 50mm																																																														
Line Mode : VA/VB			Comment :																																																														
Power Supply : DC 12V																																																																	
Limit1: [EN 55022] Class A(QP)																																																																	
Limit2: [EN 55022] Class A(Ave.)																																																																	
							Limit1(QP) Limit2(Ave.) VA(PEAK) VB(PEAK) VA(QP) VA(Ave.) VB(QP) VB(Ave.)																																																										
							DC 12V																																																										
<table><tr><th>Frequency [MHz]</th><th>Meter Reading (Ave.) [dBuV]</th><th>Meter Reading (QP) [dBuV]</th><th>Factor [dB]</th><th>Level(Ave.) [dBuV]</th><th>Level(QP) [dBuV]</th><th>Line</th><th>Limit(Ave.) [dBuV]</th><th>Limit(QP) [dBuV]</th><th>Margin(Ave.) [dB]</th><th>Margin(QP) [dB]</th></tr><tr><td>0.2741</td><td>42.2</td><td>41.7</td><td>9.8</td><td>52</td><td>51.5</td><td>VA</td><td>66</td><td>79</td><td>14</td><td>27.5</td></tr><tr><td>0.5082</td><td>16.3</td><td>21.6</td><td>9.9</td><td>26.2</td><td>31.5</td><td>VB</td><td>60</td><td>73</td><td>33.8</td><td>41.5</td></tr></table>											Frequency [MHz]	Meter Reading (Ave.) [dBuV]	Meter Reading (QP) [dBuV]	Factor [dB]	Level(Ave.) [dBuV]	Level(QP) [dBuV]	Line	Limit(Ave.) [dBuV]	Limit(QP) [dBuV]	Margin(Ave.) [dB]	Margin(QP) [dB]	0.2741	42.2	41.7	9.8	52	51.5	VA	66	79	14	27.5	0.5082	16.3	21.6	9.9	26.2	31.5	VB	60	73	33.8	41.5																						
Frequency [MHz]	Meter Reading (Ave.) [dBuV]	Meter Reading (QP) [dBuV]	Factor [dB]	Level(Ave.) [dBuV]	Level(QP) [dBuV]	Line	Limit(Ave.) [dBuV]	Limit(QP) [dBuV]	Margin(Ave.) [dB]	Margin(QP) [dB]																																																							
0.2741	42.2	41.7	9.8	52	51.5	VA	66	79	14	27.5																																																							
0.5082	16.3	21.6	9.9	26.2	31.5	VB	60	73	33.8	41.5																																																							
RADIATED EMISSION																																																																	
Model Name : SUTW101215			Temp. : 25																																																														
Model No. :			Humi. : 45																																																														
Serial No. :			Date : 2009/1/27 13:48																																																														
Points : 4			Test Equip. : R3132,ESPC																																																														
Detector : PEAK/QP			Load Line : 50mm																																																														
Polarization : Hori. & Vert.			Comment :																																																														
Power Supply : DC 12V																																																																	
Limit: [EN 55022] Class A<3m>																																																																	
							Limit(QP) Horizontal(PEAK) Vertical(PEAK) Horizontal(QP) Vertical(QP)																																																										
							DC 12V																																																										
<table><tr><th>Frequency [MHz]</th><th>Meter Reading (QP) [dBuV]</th><th>Ant. Type</th><th>Antenna Factor [dB/m]</th><th>Cable & Preamp [dB]</th><th>Level(QP) [dBuV/m]</th><th>Angle [°]</th><th>Height [cm]</th><th>Polar.</th><th>Limit [dBuV/m]</th><th>Margin [dB]</th></tr><tr><td>114.414</td><td>55.8</td><td>BL</td><td>10.8</td><td>-31.7</td><td>34.9</td><td>195</td><td>137</td><td>Hori.</td><td>50</td><td>15.1</td></tr><tr><td>124.865</td><td>55.8</td><td>BL</td><td>11.1</td><td>-31.7</td><td>35.2</td><td>210</td><td>122</td><td>Hori.</td><td>50</td><td>14.8</td></tr><tr><td>148.223</td><td>53.5</td><td>BL</td><td>10.6</td><td>-31.6</td><td>32.5</td><td>355</td><td>146</td><td>Vert.</td><td>50</td><td>17.5</td></tr><tr><td>194.179</td><td>53.3</td><td>BL</td><td>8.4</td><td>-31.3</td><td>30.4</td><td>113</td><td>100</td><td>Vert.</td><td>50</td><td>19.6</td></tr></table>											Frequency [MHz]	Meter Reading (QP) [dBuV]	Ant. Type	Antenna Factor [dB/m]	Cable & Preamp [dB]	Level(QP) [dBuV/m]	Angle [°]	Height [cm]	Polar.	Limit [dBuV/m]	Margin [dB]	114.414	55.8	BL	10.8	-31.7	34.9	195	137	Hori.	50	15.1	124.865	55.8	BL	11.1	-31.7	35.2	210	122	Hori.	50	14.8	148.223	53.5	BL	10.6	-31.6	32.5	355	146	Vert.	50	17.5	194.179	53.3	BL	8.4	-31.3	30.4	113	100	Vert.	50	19.6
Frequency [MHz]	Meter Reading (QP) [dBuV]	Ant. Type	Antenna Factor [dB/m]	Cable & Preamp [dB]	Level(QP) [dBuV/m]	Angle [°]	Height [cm]	Polar.	Limit [dBuV/m]	Margin [dB]																																																							
114.414	55.8	BL	10.8	-31.7	34.9	195	137	Hori.	50	15.1																																																							
124.865	55.8	BL	11.1	-31.7	35.2	210	122	Hori.	50	14.8																																																							
148.223	53.5	BL	10.6	-31.6	32.5	355	146	Vert.	50	17.5																																																							
194.179	53.3	BL	8.4	-31.3	30.4	113	100	Vert.	50	19.6																																																							

DATA SHEET

Model	Circuit used for measurement
Test	EMI Line conduction & Radiated emission

1. Line conduction



2. Radiated emission





Conditions

Test : EMI
Model Name : SUTS/SUTW1012□□

○Photographs of Test Set-Up

LINE CONDUCTION



RADIATED EMISSION



○Testing circuitry

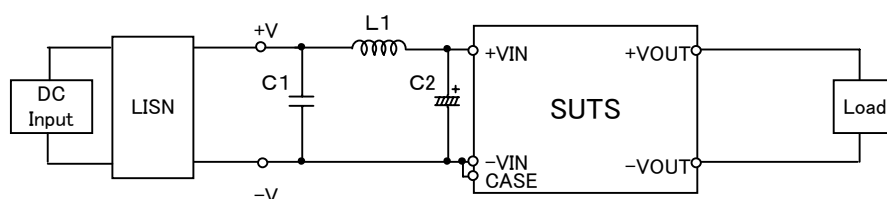


Fig.1 Testing circuitry 1

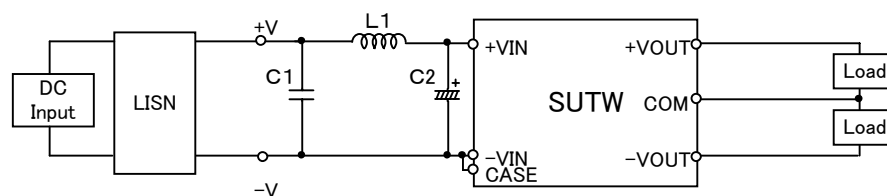


Fig.2 Testing circuitry 2

L1 :	1 μ H	CI4C-1R0	(KORIN ELECTRONICS)
C1 :	25V 10 μ F	C3225JB1E106M	(TDK)
C2 :	25V 220 μ F	UPW1E221M	(NICHICON)