

DATA SHEET							Date	11-Feb-09																																																									
Model	SUTS61212						Temp.	25 degreeC																																																									
Test	EMI Line conduction & Radiated emission						Humid.	45 %RH																																																									
							Tested by	D.Joboji																																																									
LINE CONDUCTION																																																																	
Model Name : SUTS61212			Power Supply : DC 12V																																																														
Model No. :			Temp. : 25																																																														
Serial No. :			Humi. : 45																																																														
Points : 4			Date : 2009/2/11 13:58																																																														
Detector : PEAK/QP/Ave.			Test Equip. : R3132,ESPC																																																														
Line Mode : VA/VB			Comment :																																																														
Limit1: [EN 55022] Class A(QP)																																																																	
Limit2: [EN 55022] Class A(Ave.)																																																																	
							Limit1(QP) Limit2(Ave.) VA(PEAK) VB(PEAK) VA(QP) VA(Ave.) VB(QP) VB(Ave.)																																																										
							DC 12V																																																										
<table><tr><th>Frequency [MHz]</th><th>Meter Reading (Ave.) [dBμV]</th><th>Meter Reading (QP) [dBμV]</th><th>Factor [dB]</th><th>Level(Ave.) [dBμV]</th><th>Level(QP) [dBμV]</th><th>Line</th><th>Limit(Ave.) [dBμV]</th><th>Limit(QP) [dBμV]</th><th>Margin(Ave.) [dB]</th><th>Margin(QP) [dB]</th></tr><tr><td>0.3558</td><td>43.4</td><td>43</td><td>9.8</td><td>53.2</td><td>52.8</td><td>VA</td><td>66</td><td>79</td><td>12.8</td><td>26.2</td></tr><tr><td>1.0671</td><td>26.6</td><td>26.4</td><td>9.9</td><td>36.5</td><td>36.3</td><td>VA</td><td>60</td><td>73</td><td>23.5</td><td>36.7</td></tr><tr><td>12.4571</td><td>13.6</td><td>23.2</td><td>10.1</td><td>23.7</td><td>33.3</td><td>VA</td><td>60</td><td>73</td><td>36.3</td><td>39.7</td></tr><tr><td>11.0345</td><td>15.8</td><td>24</td><td>10.1</td><td>25.9</td><td>34.1</td><td>VB</td><td>60</td><td>73</td><td>34.1</td><td>38.9</td></tr></table>											Frequency [MHz]	Meter Reading (Ave.) [dBμV]	Meter Reading (QP) [dBμV]	Factor [dB]	Level(Ave.) [dBμV]	Level(QP) [dBμV]	Line	Limit(Ave.) [dBμV]	Limit(QP) [dBμV]	Margin(Ave.) [dB]	Margin(QP) [dB]	0.3558	43.4	43	9.8	53.2	52.8	VA	66	79	12.8	26.2	1.0671	26.6	26.4	9.9	36.5	36.3	VA	60	73	23.5	36.7	12.4571	13.6	23.2	10.1	23.7	33.3	VA	60	73	36.3	39.7	11.0345	15.8	24	10.1	25.9	34.1	VB	60	73	34.1	38.9
Frequency [MHz]	Meter Reading (Ave.) [dBμV]	Meter Reading (QP) [dBμV]	Factor [dB]	Level(Ave.) [dBμV]	Level(QP) [dBμV]	Line	Limit(Ave.) [dBμV]	Limit(QP) [dBμV]	Margin(Ave.) [dB]	Margin(QP) [dB]																																																							
0.3558	43.4	43	9.8	53.2	52.8	VA	66	79	12.8	26.2																																																							
1.0671	26.6	26.4	9.9	36.5	36.3	VA	60	73	23.5	36.7																																																							
12.4571	13.6	23.2	10.1	23.7	33.3	VA	60	73	36.3	39.7																																																							
11.0345	15.8	24	10.1	25.9	34.1	VB	60	73	34.1	38.9																																																							
RADIATED EMISSION																																																																	
Model Name : SUTS61212			Power Supply : DC 12V																																																														
Model No. :			Temp. : 25																																																														
Serial No. :			Humi. : 45																																																														
Points : 3			Date : 2009/2/11 14:37																																																														
Detector : PEAK/QP			Test Equip. : R3132,ESPC																																																														
Polarization : Hori. & Vert.			Comment :																																																														
Limit: [EN 55022] Class A<3m>																																																																	
							Limit(QP) Horizontal(PEAK) Vertical(PEAK) Horizontal(QP) Vertical(QP)																																																										
							DC 12V																																																										
<table><tr><th>Frequency [MHz]</th><th>MeterReading (QP) [dBμV]</th><th>Ant. Type</th><th>Antenna Factor [dB/m]</th><th>Cable & Preamp [dB]</th><th>Level(QP) [dBμV/m]</th><th>Angle [°]</th><th>Height [cm]</th><th>Polar.</th><th>Limit [dBμV/m]</th><th>Margin [dB]</th></tr><tr><td>149.289</td><td>37.7</td><td>BL</td><td>10.6</td><td>-31.6</td><td>16.7</td><td>171</td><td>159</td><td>Hori.</td><td>50</td><td>33.3</td></tr><tr><td>30.318</td><td>30.4</td><td>BL</td><td>18.1</td><td>-32.3</td><td>16.2</td><td>207</td><td>131</td><td>Vert.</td><td>50</td><td>33.8</td></tr><tr><td>253.973</td><td>37.2</td><td>BL</td><td>12.9</td><td>-31.1</td><td>19</td><td>223</td><td>142</td><td>Vert.</td><td>57</td><td>38</td></tr></table>											Frequency [MHz]	MeterReading (QP) [dBμV]	Ant. Type	Antenna Factor [dB/m]	Cable & Preamp [dB]	Level(QP) [dBμV/m]	Angle [°]	Height [cm]	Polar.	Limit [dBμV/m]	Margin [dB]	149.289	37.7	BL	10.6	-31.6	16.7	171	159	Hori.	50	33.3	30.318	30.4	BL	18.1	-32.3	16.2	207	131	Vert.	50	33.8	253.973	37.2	BL	12.9	-31.1	19	223	142	Vert.	57	38											
Frequency [MHz]	MeterReading (QP) [dBμV]	Ant. Type	Antenna Factor [dB/m]	Cable & Preamp [dB]	Level(QP) [dBμV/m]	Angle [°]	Height [cm]	Polar.	Limit [dBμV/m]	Margin [dB]																																																							
149.289	37.7	BL	10.6	-31.6	16.7	171	159	Hori.	50	33.3																																																							
30.318	30.4	BL	18.1	-32.3	16.2	207	131	Vert.	50	33.8																																																							
253.973	37.2	BL	12.9	-31.1	19	223	142	Vert.	57	38																																																							

DATA SHEET

Model	Circuit used for measurement
Test	EMI Line conduction & Radiated emission

1. Line conduction



2. Radiated emission





Conditions

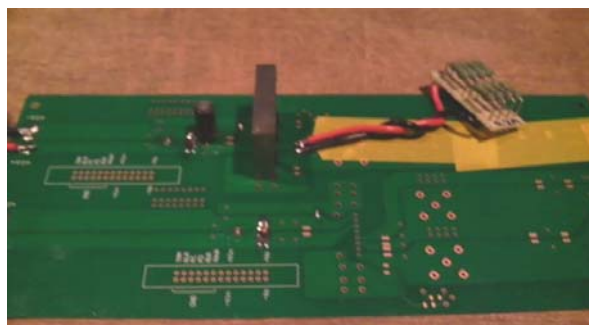
Test : EMI
Model Name : SUTS/SUTW 612□□

○Photographs of Test Set-Up

LINE CONDUCTION



RADIATED EMISSION



○Testing circuitry

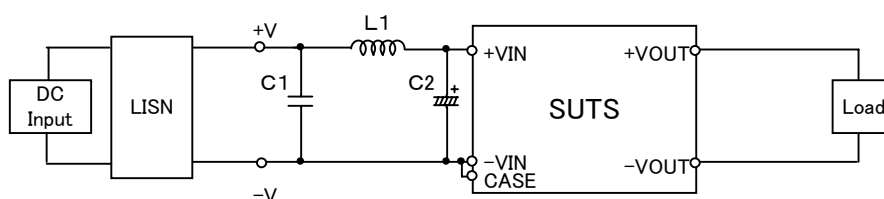


Fig.1 Testing circuitry 1

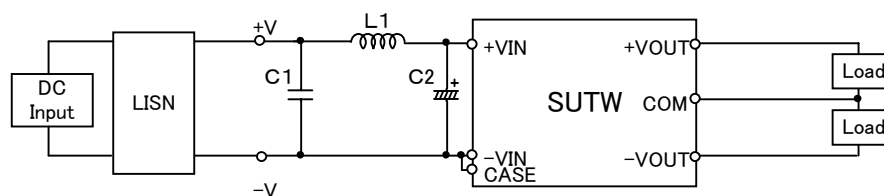


Fig.2 Testing circuitry 2

L1 :	1 μ H	CY3H-1R0	(KORIN ELECTRONICS)
C1 :	25V	1 μ F	C3216JB1E105M (TDK)
C2 :	25V	220 μ F	LXZ25VB220(M) (NIPPON CHEMI-COM)