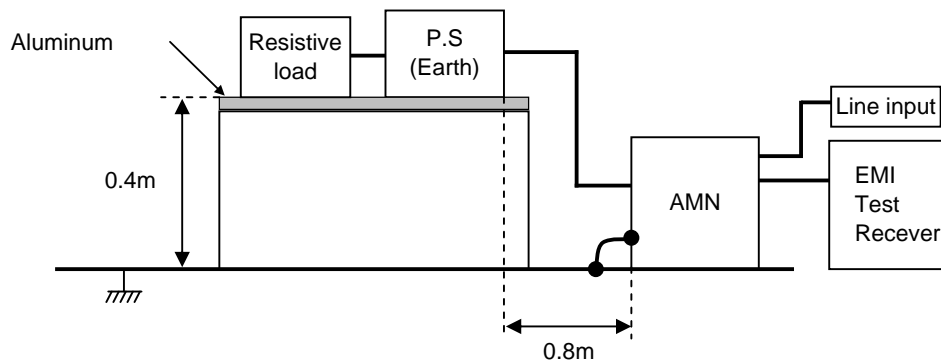


DATA SHEET							Date	06-Feb-09																																														
Model	SUTS32412						Temp.	25 degreeC																																														
Test	EMI Line conduction & Radiated emission						Humid.	45 %RH																																														
							Tested by	D.Joboji																																														
LINE CONDUCTION																																																						
Model Name : SUTS32412			Temp. : 25																																																			
Model No. :			Humi. : 45																																																			
Serial No. :			Date : 2009/2/6 18:00																																																			
Points : 3			Test Equip. : R3132,ESPC																																																			
Detector : PEAK/QP/Ave.			Load Line : 10mm																																																			
Line Mode : VA			Comment :																																																			
Power Supply : DC 24V																																																						
Limit1: [EN 55022] Class A(QP)																																																						
Limit2: [EN 55022] Class A(Ave.)																																																						
<table><tr><th>Frequency [MHz]</th><th>Meter Reading (Ave.) [dBuV]</th><th>Meter Reading (QP) [dBuV]</th><th>Factor [dB]</th><th>Level(Ave.) [dBuV]</th><th>Level(QP) [dBuV]</th><th>Line</th><th>Limit(Ave.) [dBuV]</th><th>Limit(QP) [dBuV]</th><th>Margin(Ave.) [dB]</th><th>Margin(QP) [dB]</th></tr><tr><td>0.1736</td><td>24.3</td><td>30.9</td><td>9.8</td><td>34.1</td><td>40.7</td><td>VA</td><td>66</td><td>79</td><td>31.9</td><td>38.3</td></tr><tr><td>0.3864</td><td>24.2</td><td>26.5</td><td>9.9</td><td>34.1</td><td>36.4</td><td>VA</td><td>66</td><td>79</td><td>31.9</td><td>42.6</td></tr><tr><td>9.9164</td><td>18.5</td><td>22.6</td><td>10.1</td><td>28.6</td><td>32.7</td><td>VA</td><td>60</td><td>73</td><td>31.4</td><td>40.3</td></tr></table>											Frequency [MHz]	Meter Reading (Ave.) [dBuV]	Meter Reading (QP) [dBuV]	Factor [dB]	Level(Ave.) [dBuV]	Level(QP) [dBuV]	Line	Limit(Ave.) [dBuV]	Limit(QP) [dBuV]	Margin(Ave.) [dB]	Margin(QP) [dB]	0.1736	24.3	30.9	9.8	34.1	40.7	VA	66	79	31.9	38.3	0.3864	24.2	26.5	9.9	34.1	36.4	VA	66	79	31.9	42.6	9.9164	18.5	22.6	10.1	28.6	32.7	VA	60	73	31.4	40.3
Frequency [MHz]	Meter Reading (Ave.) [dBuV]	Meter Reading (QP) [dBuV]	Factor [dB]	Level(Ave.) [dBuV]	Level(QP) [dBuV]	Line	Limit(Ave.) [dBuV]	Limit(QP) [dBuV]	Margin(Ave.) [dB]	Margin(QP) [dB]																																												
0.1736	24.3	30.9	9.8	34.1	40.7	VA	66	79	31.9	38.3																																												
0.3864	24.2	26.5	9.9	34.1	36.4	VA	66	79	31.9	42.6																																												
9.9164	18.5	22.6	10.1	28.6	32.7	VA	60	73	31.4	40.3																																												
RADIATED EMISSION																																																						
Model Name : SUTS32412			Temp. : 25																																																			
Model No. :			Humi. : 45																																																			
Serial No. :			Date : 2009/2/6 18:29																																																			
Points : 3			Test Equip. : R3132,ESPC																																																			
Detector : PEAK/QP			Load Line : 10mm																																																			
Polarization : Hori. & Vert.			Comment :																																																			
Power Supply : DC 24V																																																						
Limit: [EN 55022] Class A<3m>																																																						
<table><tr><th>Frequency [MHz]</th><th>MeterReading (QP) [dBuV]</th><th>Ant. Type</th><th>Antenna Factor [dB/m]</th><th>Cable &amp; Preamp [dB]</th><th>Level(QP) [dBuV/m]</th><th>Angle [°]</th><th>Height [cm]</th><th>Polar.</th><th>Limit [dBuV/m]</th><th>Margin [dB]</th></tr><tr><td>978.144</td><td>23.4</td><td>BL</td><td>25.2</td><td>-29.3</td><td>19.3</td><td>68</td><td>117</td><td>Hori.</td><td>57</td><td>37.7</td></tr><tr><td>281.426</td><td>46.6</td><td>BL</td><td>12.6</td><td>-31</td><td>28.2</td><td>291</td><td>152</td><td>Vert.</td><td>57</td><td>28.8</td></tr><tr><td>30.483</td><td>25.2</td><td>BL</td><td>18</td><td>-32.3</td><td>10.9</td><td>25</td><td>141</td><td>Vert.</td><td>50</td><td>39.1</td></tr></table>											Frequency [MHz]	MeterReading (QP) [dBuV]	Ant. Type	Antenna Factor [dB/m]	Cable & Preamp [dB]	Level(QP) [dBuV/m]	Angle [°]	Height [cm]	Polar.	Limit [dBuV/m]	Margin [dB]	978.144	23.4	BL	25.2	-29.3	19.3	68	117	Hori.	57	37.7	281.426	46.6	BL	12.6	-31	28.2	291	152	Vert.	57	28.8	30.483	25.2	BL	18	-32.3	10.9	25	141	Vert.	50	39.1
Frequency [MHz]	MeterReading (QP) [dBuV]	Ant. Type	Antenna Factor [dB/m]	Cable & Preamp [dB]	Level(QP) [dBuV/m]	Angle [°]	Height [cm]	Polar.	Limit [dBuV/m]	Margin [dB]																																												
978.144	23.4	BL	25.2	-29.3	19.3	68	117	Hori.	57	37.7																																												
281.426	46.6	BL	12.6	-31	28.2	291	152	Vert.	57	28.8																																												
30.483	25.2	BL	18	-32.3	10.9	25	141	Vert.	50	39.1																																												

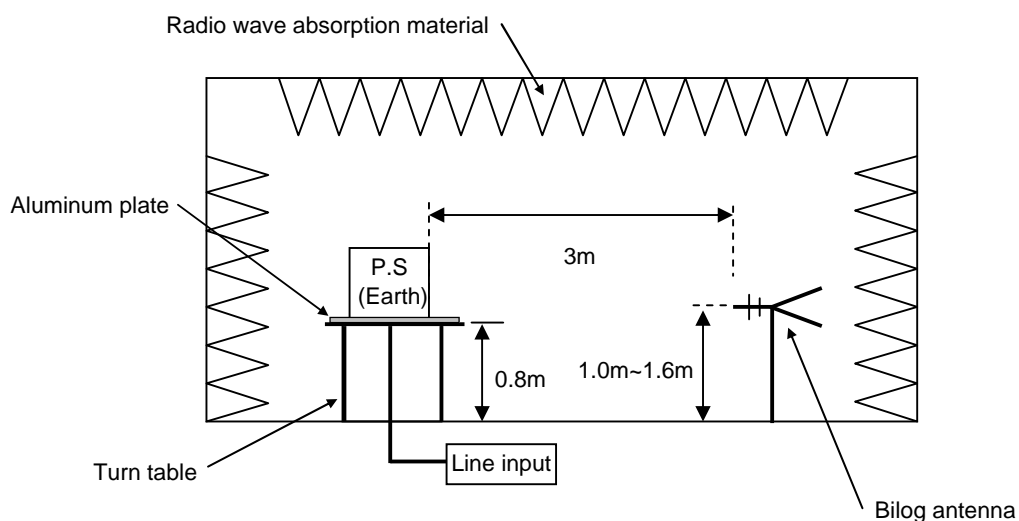
## DATA SHEET

Model	Circuit used for measurement
Test	EMI Line conduction & Radiated emission

### 1. Line conduction



### 2. Radiated emission





## Conditions

Test : EMI  
Model Name : SUTS/SUTW 324□□

○Photographs of Test Set-Up

### LINE CONDUCTION



### RADIATED EMISSION



○Testing circuitry

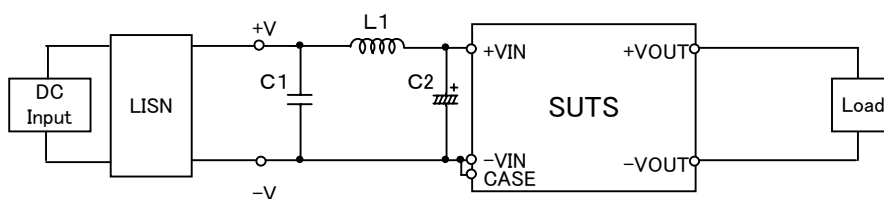


Fig.1 Testing circuitry 1

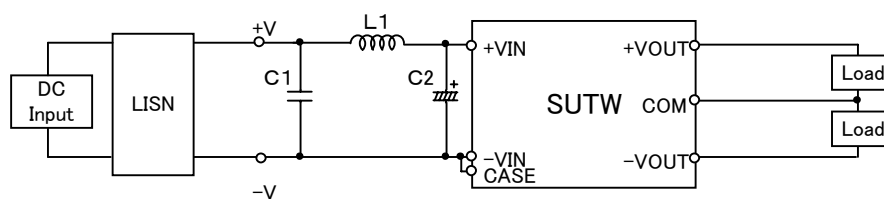


Fig.2 Testing circuitry 2

L1 :	10 $\mu$ H	CY3H-100	(KORIN ELECTRONICS)
C1 :	50V 0.47 $\mu$ F	C2012JB1H474K	(TDK)
C2 :	50V 47 $\mu$ F	UPW1H470M	(NICHICON)