

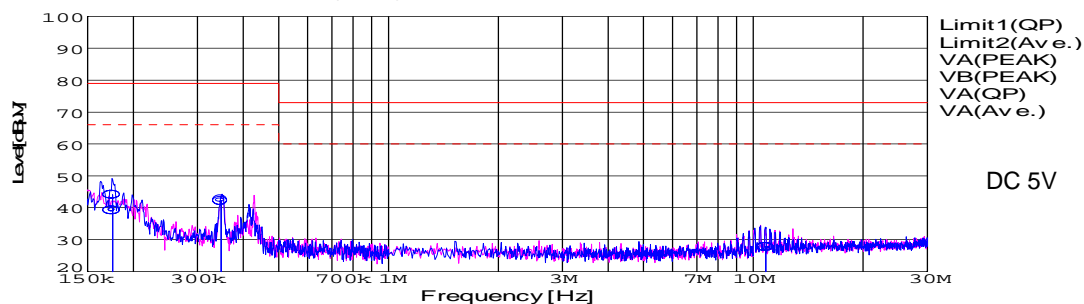
DATA SHEET

Model		SUTS30505	Date	24-Dec-08
Test		EMI Line conduction & Radiated emission	Temp.	25 degreeC
			Humid.	45 %RH
			Tested by	D.Joboji

LINE CONDUCTION

Model Name : SUTS30505
 Model No. :
 Serial No. :
 Points : 3
 Detector : PEAK/QP/Ave.
 Line Mode : VA
 Power Supply : DC 5V
 Limit1: [EN 55022] Class A(QP)
 Limit2: [EN 55022] Class A(Ave.)

Temp. : 25
 Humi. : 45
 Date : 2008/12/24 14:44
 Test Equip. : R3132,ESPC
 Load Line : 10mm
 Comment : -

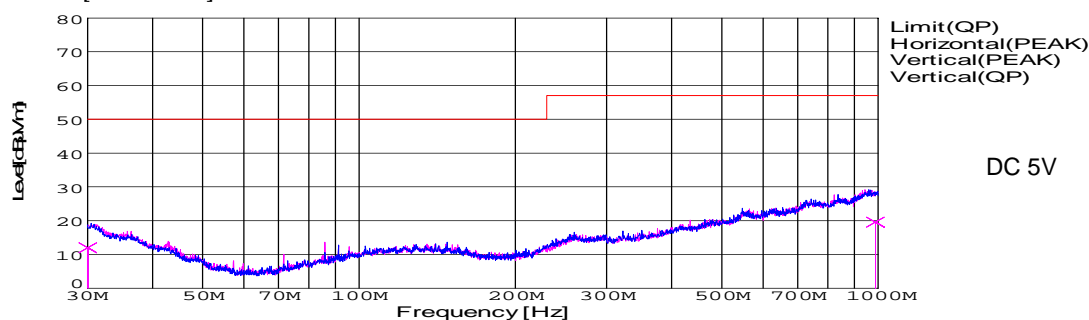


Frequency [MHz]	Meter Reading (Ave.) [dBuV]	Meter Reading (QP) [dBuV]	Factor [dB]	Level(Ave.) [dBuV]	Level(QP) [dBuV]	Line	Limit(Ave.) [dBuV]	Limit(QP) [dBuV]	Margin(Ave.) [dB]	Margin(QP) [dB]
0.1756	29.4	34.3	9.8	39.2	44.1	VA	66	79	26.8	34.9
0.3478	32.5	32.1	9.8	42.3	41.9	VA	66	79	23.7	37.1
10.8209	3.2	17.7	10.1	13.3	27.8	VA	60	73	46.7	45.2

RADIATED EMISSION

Model Name : SUTS30505
 Model No. :
 Serial No. :
 Points : 2
 Detector : PEAK/QP
 Polarization : Vertical
 Power Supply : DC 5V
 Limit: [EN 55022] Class A<3m>

Temp. : 25
 Humi. : 45
 Date : 2008/12/24 16:53
 Test Equip. : R3132,ESPC
 Load Line : 10mm
 Comment : -

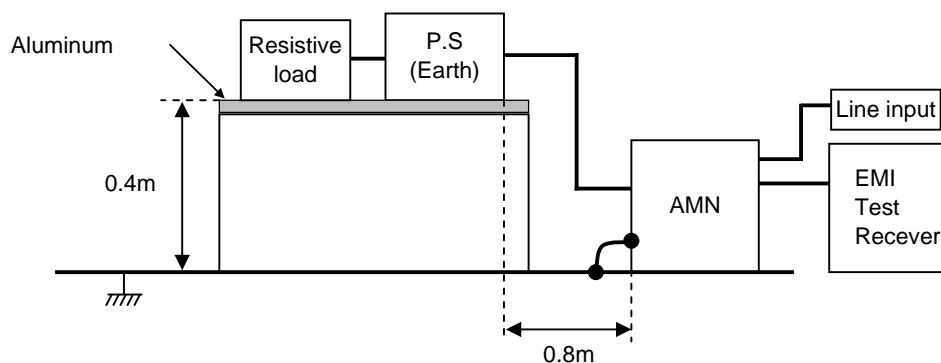


Frequency [MHz]	MeterReading (QP) [dBuV]	Ant. Type	Antenna Factor [dB/m]	Cable & Preamp [dB]	Level(QP) [dBuV/m]	Angle [°]	Height [cm]	Polar.	Limit [dBuV/m]	Margin [dB]
987.492	23.6	BL	25.3	-29.3	19.6	271	122	Vert.	57	37.4
30.04	26.1	BL	18.2	-32.3	12	194	141	Vert.	50	38

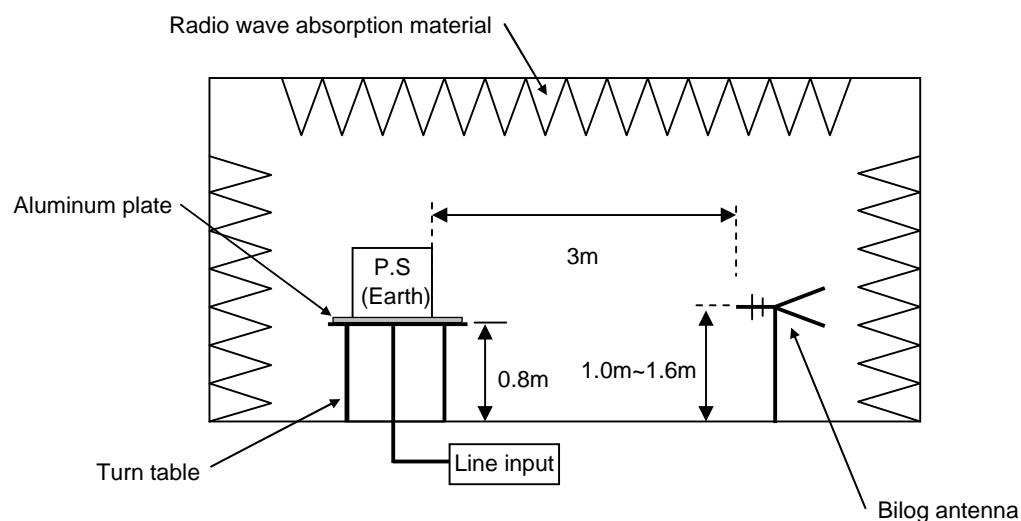
DATA SHEET

Model	Circuit used for measurement
Test	EMI Line conduction & Radiated emission

1. Line conduction



2. Radiated emission





Conditions

Test : EMI
Model Name : SUTS/SUTW 305□□

○Photographs of Test Set-Up

LINE CONDUCTION



RADIATED EMISSION



○Testing circuitry

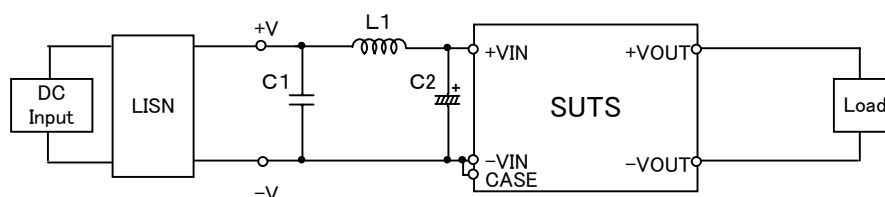


Fig.1 Testing circuitry 1

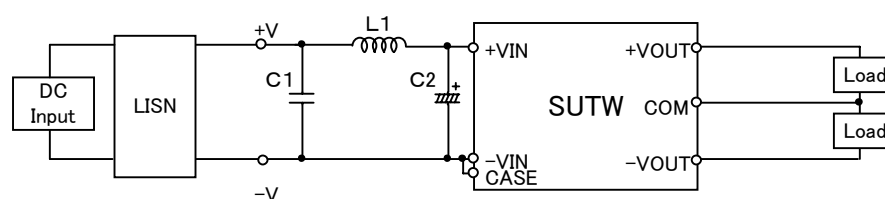


Fig.2 Testing circuitry 2

L1 :	2.2 μ H	CY3H-2R2	(KORIN ELECTRONICS)
C1 :	16V 1 μ F	C2012JB1C105K	(TDK)
C2 :	16V 220 μ F	UPW1C221M	(NICHICON)