

DATA SHEET							Date	04-Feb-09																
Model	SUTS101212						Temp.	25 degreeC																
Test	EMI Line conduction & Radiated emission						Humid.	45 %RH																
							Tested by	D.Joboji																
LINE CONDUCTION																								
Model Name : SUTS101212				Temp. : 25																				
Model No. :				Humi. : 45																				
Serial No. :				Date : 2009/2/4 8:59																				
Points : 3				Test Equip. : R3132,ESPC																				
Detector : PEAK/QP/Ave.				Load Line : 50mm																				
Line Mode : VA/VB				Comment :																				
Power Supply : DC 12V																								
Limit1: [EN 55022] Class A(QP)																								
Limit2: [EN 55022] Class A(Ave.)																								
							Limit1(QP)		Limit2(Ave.)		VA(PEAK)		VB(PEAK)		VA(QP)		VA(Ave.)		VB(QP)		VB(Ave.)		DC 12V	
Frequency [MHz]	Meter Reading (Ave.) [dBuV]	Meter Reading (QP) [dBuV]	Factor [dB]	Level(Ave.) [dBuV]	Level(QP) [dBuV]	Line	Limit(Ave.) [dBuV]	Limit(QP) [dBuV]	Margin(Ave.) [dB]	Margin(QP) [dB]														
0.2762	40.9	40.4	9.8	50.7	50.2	VA	66	79	15.3	28.8														
1.1028	26.7	26.4	9.9	36.6	36.3	VA	60	73	23.4	36.7														
1.6543	27.7	27.3	9.9	37.6	37.2	VB	60	73	22.4	35.8														

RADIATED EMISSION																		
Model Name : SUTS101212				Temp. : 25														
Model No. :				Humi. : 45														
Serial No. :				Date : 2009/2/4 9:32														
Points : 3				Test Equip. : R3132,ESPC														
Detector : PEAK/QP				Load Line : 50mm														
Polarization : Hori. & Vert.				Comment :														
Power Supply : DC 12V																		
Limit: [EN 55022] Class A<3m>																		
							Limit(QP)		Horizontal(PEAK)		Vertical(PEAK)		Horizontal(QP)		Vertical(QP)		DC 12V	
Frequency [MHz]	MeterReading (QP) [dBuV]	Ant. Type	Antenna Factor [dB/m]	Cable & Preamp [dB]	Level(QP) [dBuV/m]	Angle [°]	Height [cm]	Polar.	Limit [dBuV/m]	Margin [dB]								
110.466	58.3	BL	10.7	-31.7	37.3	163	150	Hori.	50	12.7								
154.392	55.4	BL	10.3	-31.5	34.2	138	156	Hori.	50	15.8								
30.124	52.1	BL	18.1	-32.3	37.9	261	100	Vert.	50	12.1								

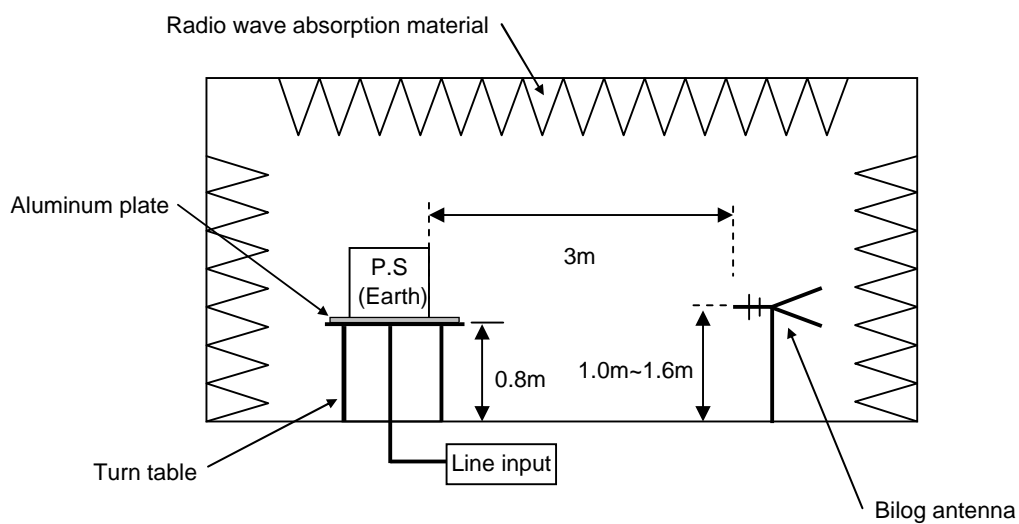
## DATA SHEET

Model	Circuit used for measurement
Test	EMI Line conduction & Radiated emission

### 1. Line conduction



### 2. Radiated emission





## Conditions

Test : EMI  
Model Name : SUTS/SUTW1012□□

○Photographs of Test Set-Up

### LINE CONDUCTION



### RADIATED EMISSION



○Testing circuitry

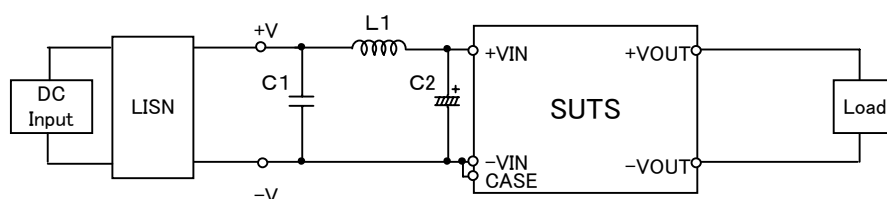


Fig.1 Testing circuitry 1

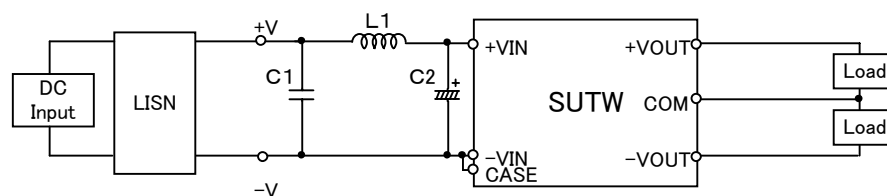


Fig.2 Testing circuitry 2

L1 :	1 $\mu$ H	CI4C-1R0	(KORIN ELECTRONICS)
C1 :	25V 10 $\mu$ F	C3225JB1E106M	(TDK)
C2 :	25V 220 $\mu$ F	UPW1E221M	(NICHICON)