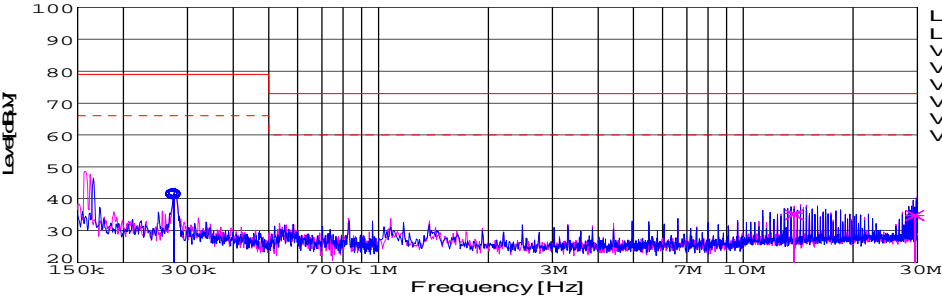
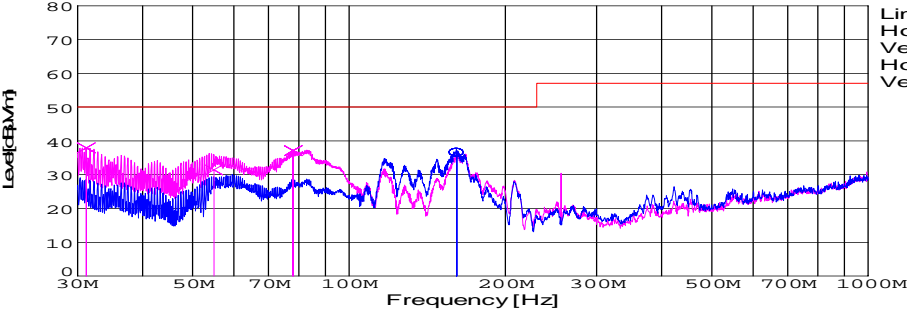


DATA SHEET							Date	02-Feb-09																																																									
Model	SUTS100505						Temp.	25 degreeC																																																									
Test	EMI Line conduction & Radiated emission						Humid.	45 %RH																																																									
							Tested by	D.Joboji																																																									
LINE CONDUCTION																																																																	
Model Name : SUTS100505			Temp. : 25																																																														
Model No. :			Humi. : 45																																																														
Serial No. :			Date : 2009/2/2 9:31																																																														
Points : 3			Test Equip. : R3132,ESPC																																																														
Detector : PEAK/QP/Ave.			Load Line :																																																														
Line Mode : VA/VB			Comment :																																																														
Power Supply : DC 5V																																																																	
Limit1: [EN 55022] Class A(QP)																																																																	
Limit2: [EN 55022] Class A(Ave.)																																																																	
							Limit1(QP)		—																																																								
							Limit2(Ave.)		- - -																																																								
							VA(PEAK)		—																																																								
							VB(PEAK)		—																																																								
							VA(QP)		○																																																								
							VA(Ave.)		○																																																								
							VB(QP)		×																																																								
							VB(Ave.)		×																																																								
							DC 5V																																																										
<table><tr><th>Frequency [MHz]</th><th>Meter Reading (Ave.) [dBuV]</th><th>Meter Reading (QP) [dBuV]</th><th>Factor [dB]</th><th>Level(Ave.) [dBuV]</th><th>Level(QP) [dBuV]</th><th>Line</th><th>Limit(Ave.) [dBuV]</th><th>Limit(QP) [dBuV]</th><th>Margin(Ave.) [dB]</th><th>Margin(QP) [dB]</th></tr><tr><td>0.276</td><td>31.8</td><td>31.3</td><td>9.8</td><td>41.6</td><td>41.1</td><td>VA</td><td>66</td><td>79</td><td>24.4</td><td>37.9</td></tr><tr><td>13.7819</td><td>25.2</td><td>24.8</td><td>10.2</td><td>35.4</td><td>35</td><td>VB</td><td>60</td><td>73</td><td>24.6</td><td>38</td></tr><tr><td>29.4943</td><td>24.2</td><td>24.3</td><td>10.5</td><td>34.7</td><td>34.8</td><td>VB</td><td>60</td><td>73</td><td>25.3</td><td>38.2</td></tr></table>											Frequency [MHz]	Meter Reading (Ave.) [dBuV]	Meter Reading (QP) [dBuV]	Factor [dB]	Level(Ave.) [dBuV]	Level(QP) [dBuV]	Line	Limit(Ave.) [dBuV]	Limit(QP) [dBuV]	Margin(Ave.) [dB]	Margin(QP) [dB]	0.276	31.8	31.3	9.8	41.6	41.1	VA	66	79	24.4	37.9	13.7819	25.2	24.8	10.2	35.4	35	VB	60	73	24.6	38	29.4943	24.2	24.3	10.5	34.7	34.8	VB	60	73	25.3	38.2											
Frequency [MHz]	Meter Reading (Ave.) [dBuV]	Meter Reading (QP) [dBuV]	Factor [dB]	Level(Ave.) [dBuV]	Level(QP) [dBuV]	Line	Limit(Ave.) [dBuV]	Limit(QP) [dBuV]	Margin(Ave.) [dB]	Margin(QP) [dB]																																																							
0.276	31.8	31.3	9.8	41.6	41.1	VA	66	79	24.4	37.9																																																							
13.7819	25.2	24.8	10.2	35.4	35	VB	60	73	24.6	38																																																							
29.4943	24.2	24.3	10.5	34.7	34.8	VB	60	73	25.3	38.2																																																							
RADIATED EMISSION																																																																	
Model Name : SUTS100505			Temp. : 25																																																														
Model No. :			Humi. : 45																																																														
Serial No. :			Date : 2009/2/2 9:55																																																														
Points : 4			Test Equip. : R3132,ESPC																																																														
Detector : PEAK/QP			Load Line : 50mm																																																														
Polarization : Hori. & Vert.			Comment :																																																														
Power Supply :																																																																	
Limit: [EN 55022] Class A<3m>																																																																	
							Limit(QP)		—																																																								
							Horizontal(PEAK)		—																																																								
							Vertical(PEAK)		—																																																								
							Horizontal(QP)		○																																																								
							Vertical(QP)		×																																																								
							DC 5V																																																										
<table><tr><th>Frequency [MHz]</th><th>Meter Reading (QP) [dBuV]</th><th>Ant. Type</th><th>Antenna Factor [dB/m]</th><th>Cable & Preamp [dB]</th><th>Level(QP) [dBuV/m]</th><th>Angle [°]</th><th>Height [cm]</th><th>Polar.</th><th>Limit [dBuV/m]</th><th>Margin [dB]</th></tr><tr><td>161.135</td><td>58.2</td><td>BL</td><td>9.8</td><td>-31.5</td><td>36.5</td><td>160</td><td>156</td><td>Hori.</td><td>50</td><td>13.5</td></tr><tr><td>31.184</td><td>52.6</td><td>BL</td><td>17.6</td><td>-32.3</td><td>37.9</td><td>235</td><td>100</td><td>Vert.</td><td>50</td><td>12.1</td></tr><tr><td>54.909</td><td>57.8</td><td>BL</td><td>5.7</td><td>-32.1</td><td>31.4</td><td>348</td><td>119</td><td>Vert.</td><td>50</td><td>18.6</td></tr><tr><td>78.074</td><td>62.2</td><td>BL</td><td>6.8</td><td>-31.9</td><td>37.1</td><td>163</td><td>113</td><td>Vert.</td><td>50</td><td>12.9</td></tr></table>											Frequency [MHz]	Meter Reading (QP) [dBuV]	Ant. Type	Antenna Factor [dB/m]	Cable & Preamp [dB]	Level(QP) [dBuV/m]	Angle [°]	Height [cm]	Polar.	Limit [dBuV/m]	Margin [dB]	161.135	58.2	BL	9.8	-31.5	36.5	160	156	Hori.	50	13.5	31.184	52.6	BL	17.6	-32.3	37.9	235	100	Vert.	50	12.1	54.909	57.8	BL	5.7	-32.1	31.4	348	119	Vert.	50	18.6	78.074	62.2	BL	6.8	-31.9	37.1	163	113	Vert.	50	12.9
Frequency [MHz]	Meter Reading (QP) [dBuV]	Ant. Type	Antenna Factor [dB/m]	Cable & Preamp [dB]	Level(QP) [dBuV/m]	Angle [°]	Height [cm]	Polar.	Limit [dBuV/m]	Margin [dB]																																																							
161.135	58.2	BL	9.8	-31.5	36.5	160	156	Hori.	50	13.5																																																							
31.184	52.6	BL	17.6	-32.3	37.9	235	100	Vert.	50	12.1																																																							
54.909	57.8	BL	5.7	-32.1	31.4	348	119	Vert.	50	18.6																																																							
78.074	62.2	BL	6.8	-31.9	37.1	163	113	Vert.	50	12.9																																																							

DATA SHEET

Model	Circuit used for measurement
Test	EMI Line conduction & Radiated emission

1. Line conduction



2. Radiated emission





Conditions

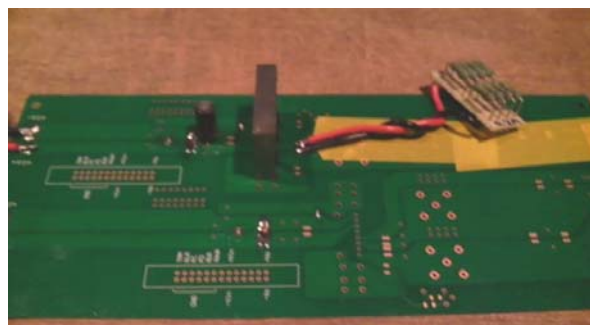
Test : EMI
Model Name : SUTS/SUTW 305□□

○Photographs of Test Set-Up

LINE CONDUCTION



RADIATED EMISSION



○Testing circuitry

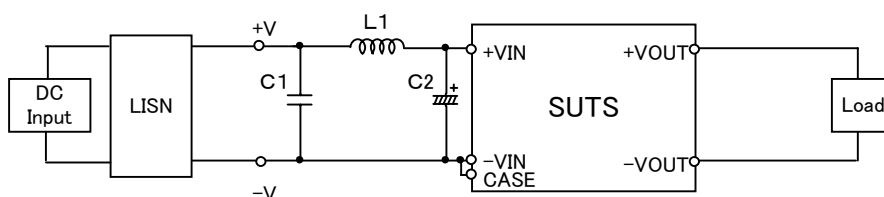


Fig.1 Testing circuitry 1

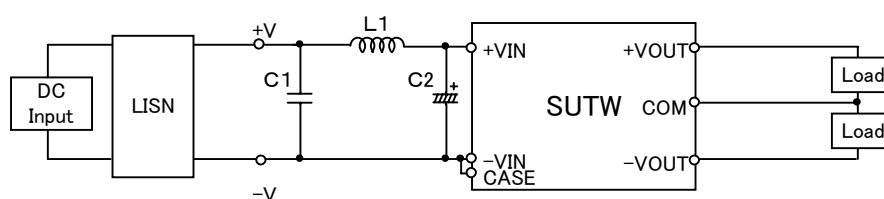


Fig.2 Testing circuitry 2

L1 :	2.2 μ H	CY3H-2R2	(KORIN ELECTRONICS)
C1 :	16V 1 μ F	C2012JB1C105K	(TDK)
C2 :	16V 220 μ F	UPW1C221M	(NICHICON)