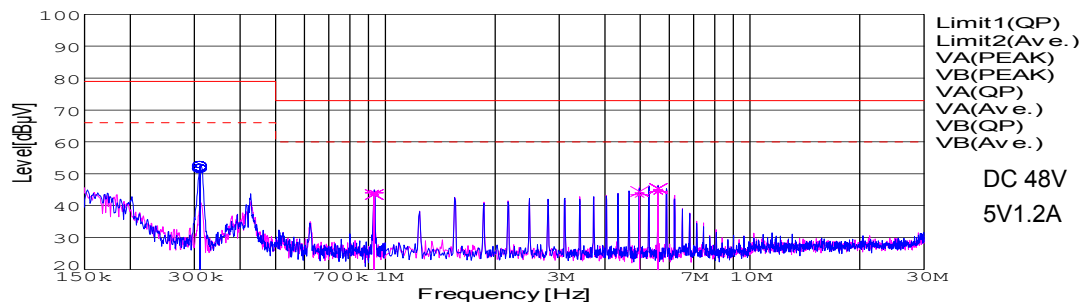


Date	10-Mar-05
Temp.	25 degreeC
Humid.	45 %RH
Tested by	Y.Hirose

```
Model Name      : SUS64805
Model No.       :
Serial No.      :
Points          : 4
Detector        : PEAK/QP/
Line Mode       : VA/VB
Power Supply    : DC 48V
Limit1: [EN 55022] Class A(QP)
Limit2: [EN 55022] Class A(Ave.)
```

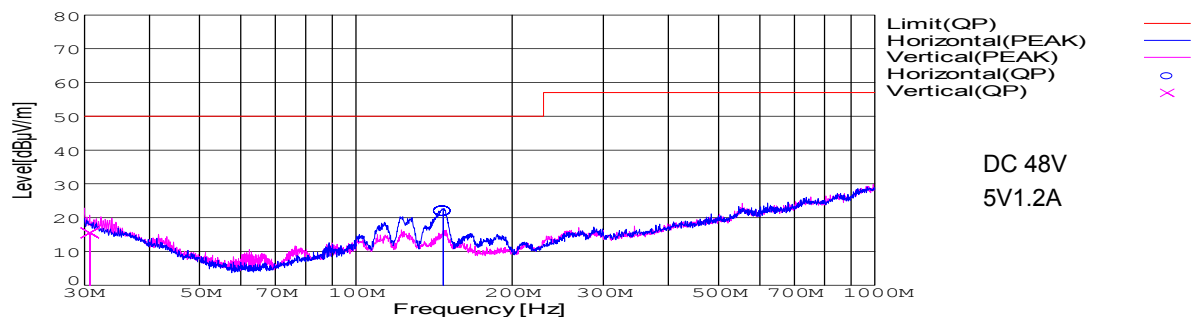
```
Temp.      : 25
Humi.     : 45
Date      : 2005/3/10 9:18
Test Equip. : R3132,ESPC
Comment   : Y.Hirose
5V1.2A
```



Frequency [MHz]	Meter Reading (Ave.)[dBuV]	Meter Reading (QP)[dBuV]	Factor [dB]	Level(Ave.) [dBuV]	Level(QP) [dBuV]	Line	Limit(Ave.) [dBuV]	Limit(QP) [dBuV]	Margin(Ave.) [dB]	Margin(QP) [dB]
0.3107	42.4	41.8	9.8	52.2	51.6	VA	66	79	13.8	27.4
0.9329	34.2	33.6	9.9	44.1	43.5	VB	60	73	15.9	29.5
4.9755	33.4	34.5	10	43.4	44.5	VB	60	73	16.6	28.5
5.5976	34.5	35.4	10	44.5	45.4	VB	60	73	15.5	27.6

```
Model Name      : SUS64805
Model No.      :
Serial No.     :
Points         : 2
Detector       : PEAK/QP
Polarization   : Hori. & Vert.
Power Supply   : DC 48V
Limit: [EN 55022] Class A<3m>
```

```
Temp.      : 25
Humi.     : 45
Date      : 2005/2/4 12:10
Test Equip. : R3132,ESPC
Comment   : Y.Hirose
5V1.2A
```



Frequency [MHz]	MeterReading (QP)[dBuV]	Ant. Type	Antenna Factor[dB/m]	Cable & Preamp[dB]	Level(QP) [dBuV/m]	Angle [°]	Height[cm]	Polar.	Limit [dBuV/m]	Margin [dB]
147.42	42.8	BL	10.7	-31.6	21.9	197	147	Hori.	50	28.1
30.727	30	BL	17.8	-32.3	15.5	211	125	Vert.	50	34.5

COSEL

Conditions

Test : EMI
Model Name : SUS/SUW 648□□

○Photographs of Test Set-Up

LINE CONDUCTION



RADIATED EMISSION



○Testing circuitry

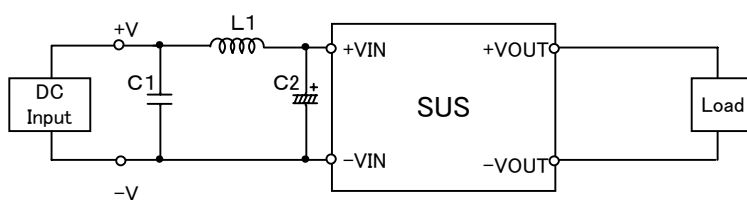


Fig.1 Testing circuitry 1

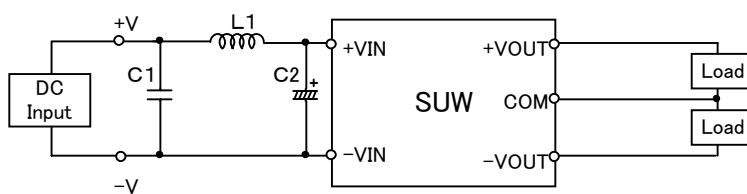


Fig.2 Testing circuitry 2

L1 :	6.8 μ H	CY3H-6R8	(KORIN ELECTRONICS)
C1 :	100V 1 μ F	C3225JB2A105M	(TDK)
C2 :	100V 47 μ F	UPW2A470M	(NICHICON)