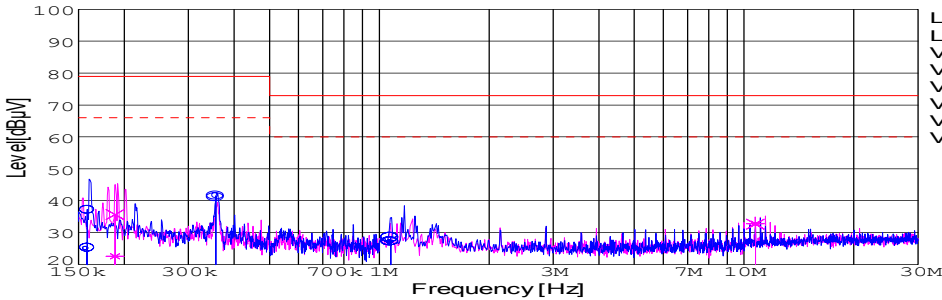
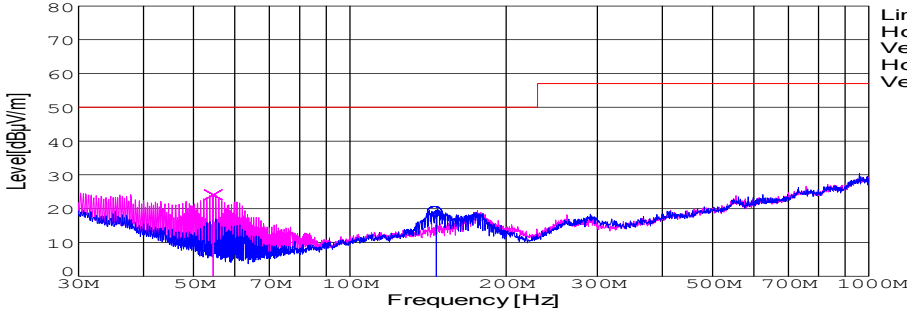


DATA SHEET							Date	18-Feb-05		
Model	SUS60505						Temp.	25 degreeC		
Test	EMI Line conduction & Radiated emission						Humid.	45 %RH		
							Tested by	Y.Hirose		
LINE CONDUCTION										
Model Name : SUS60505			Temp. : 25							
Model No. :			Humi. : 45							
Serial No. :			Date : 2005/2/18 15:50							
Points : 5			Test Equip. : R3132,ESPC							
Detector : PEAK/QP/Ave.			Comment : Y.Hirose							
Line Mode : VA/VB										
Power Supply : DC 5V										
Limit1: [EN 55022] Class A(QP)										
Limit2: [EN 55022] Class A(Ave.)										
							Limit1(QP) Limit2(Ave.) VA(PEAK) VB(PEAK) VA(QP) VA(Ave.) VB(QP) VB(Ave.)			
							DC 5V 5V1A			
Frequency [MHz]	Meter Reading (Ave.) [dBuV]	Meter Reading (QP) [dBuV]	Factor [dB]	Level(Ave.) [dBuV]	Level(QP) [dBuV]	Line	Limit(Ave.) [dBuV]	Limit(QP) [dBuV]	Margin(Ave.) [dB]	Margin(QP) [dB]
0.3567	31.7	31.4	9.8	41.5	41.2	VA	66	79	24.5	37.8
1.0748	17.1	18.5	9.9	27	28.4	VA	60	73	33	44.6
10.74	22.7	22.5	10.1	32.8	32.6	VB	60	73	27.2	40.4
RADIATED EMISSION										
Model Name : SUS60505			Temp. : 25							
Model No. :			Humi. : 45							
Serial No. :			Date : 2005/2/21 19:03							
Points : 2			Test Equip. : R3132,ESPC							
Detector : PEAK/QP			Comment : Y.Hirose							
Polarization : Hori. & Vert.										
Power Supply : DC 5V										
Limit: [EN 55022] Class A<3m>										
							Limit(QP) Horizontal(PEAK) Vertical(PEAK) Horizontal(QP) Vertical(QP)			
							DC 5V 5V1A			
Frequency [MHz]	MeterReading (QP) [dBuV]	Ant. Type	Antenna Factor [dB/m]	Cable & Preamp [dB]	Level(QP) [dBuV/m]	Angle [°]	Height [cm]	Polar.	Limit [dBuV/m]	Margin [dB]
146.892	39.9	BL	10.7	-31.6	19	195	157	Hori.	50	31
54.513	50.3	BL	5.9	-32.1	24.1	78	108	Vert.	50	25.9

# COSEL

## Conditions

Test : EMI  
Model Name : SUS/SUW 605□□

○Photographs of Test Set-Up

### LINE CONDUCTION



### RADIATED EMISSION



○Testing circuitry

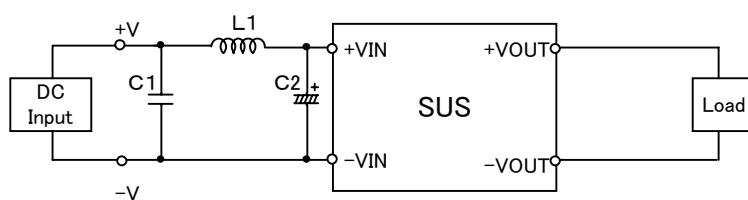


Fig.1 Testing circuitry 1

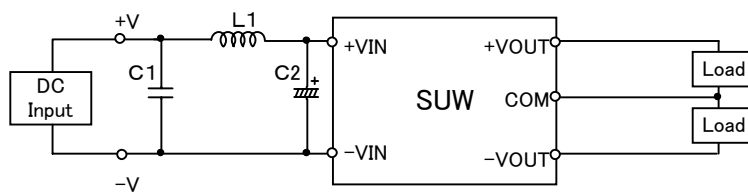


Fig.2 Testing circuitry 2

L1 :	0.5 $\mu$ H	CY3H-R50	(KORIN ELECTRONICS)
C1 :	25V    2.2 $\mu$ F	C3216JB1E225M	(TDK)
C2 :	16V    470 $\mu$ F	LXZ16VB470(M)	(NIPPON CHEMI-COM)