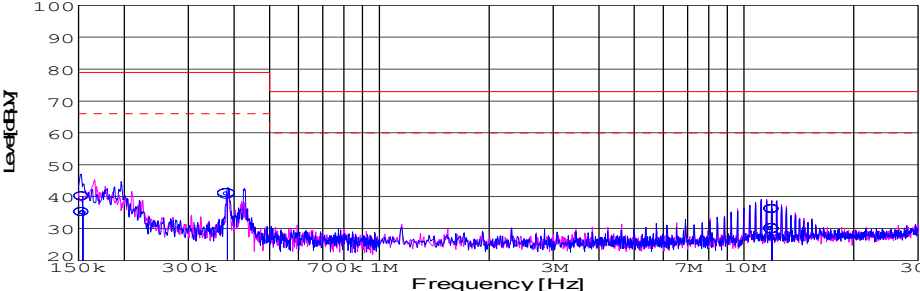
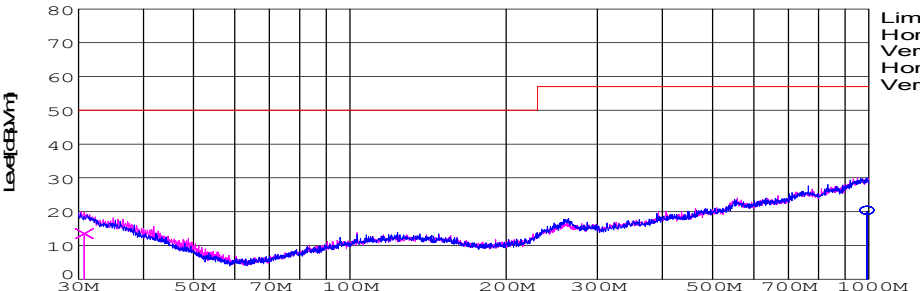


DATA SHEET							Date	13-May-05																																														
Model	SUS31205						Temp.	25 degreeC																																														
Test	EMI Line conduction & Radiated emission						Humid.	45 %RH																																														
							Tested by	T.Ohara																																														
LINE CONDUCTION																																																						
Model Name : SUS31205			Temp. : 25																																																			
Model No. :			Humi. : 45																																																			
Serial No. :			Date : 2005/5/13 10:33																																																			
Points : 3			Test Equip. : R3132,ESPC																																																			
Detector : PEAK/QP/Ave.			Load Line : 10mm																																																			
Line Mode : VA			Comment : T.Ohara																																																			
Power Supply : DC 12V																																																						
Limit1: [EN 55022] Class A(QP)																																																						
Limit2: [EN 55022] Class A(Ave.)																																																						
							Limit1(QP)		—																																													
							Limit2(Ave.)		- - -																																													
							VA(PEAK)		—																																													
							VB(PEAK)		—																																													
							VA(QP)		○																																													
							VA(Ave.)		●																																													
							DC 12V																																															
							5V0.6A																																															
<table><tr><th>Frequency [MHz]</th><th>Meter Reading (Ave.) [dBµV]</th><th>Meter Reading (QP) [dBµV]</th><th>Factor [dB]</th><th>Level(Ave.) [dBµV]</th><th>Level(QP) [dBµV]</th><th>Line</th><th>Limit(Ave.) [dBµV]</th><th>Limit(QP) [dBµV]</th><th>Margin(Ave.) [dB]</th><th>Margin(QP) [dB]</th></tr><tr><td>0.1538</td><td>25.2</td><td>30.2</td><td>9.8</td><td>35</td><td>40</td><td>VA</td><td>66</td><td>79</td><td>31</td><td>39</td></tr><tr><td>0.3832</td><td>31</td><td>31.1</td><td>9.9</td><td>40.9</td><td>41</td><td>VA</td><td>66</td><td>79</td><td>25.1</td><td>38</td></tr><tr><td>11.9</td><td>19.8</td><td>26.1</td><td>10.1</td><td>29.9</td><td>36.2</td><td>VA</td><td>60</td><td>73</td><td>30.1</td><td>36.8</td></tr></table>											Frequency [MHz]	Meter Reading (Ave.) [dBµV]	Meter Reading (QP) [dBµV]	Factor [dB]	Level(Ave.) [dBµV]	Level(QP) [dBµV]	Line	Limit(Ave.) [dBµV]	Limit(QP) [dBµV]	Margin(Ave.) [dB]	Margin(QP) [dB]	0.1538	25.2	30.2	9.8	35	40	VA	66	79	31	39	0.3832	31	31.1	9.9	40.9	41	VA	66	79	25.1	38	11.9	19.8	26.1	10.1	29.9	36.2	VA	60	73	30.1	36.8
Frequency [MHz]	Meter Reading (Ave.) [dBµV]	Meter Reading (QP) [dBµV]	Factor [dB]	Level(Ave.) [dBµV]	Level(QP) [dBµV]	Line	Limit(Ave.) [dBµV]	Limit(QP) [dBµV]	Margin(Ave.) [dB]	Margin(QP) [dB]																																												
0.1538	25.2	30.2	9.8	35	40	VA	66	79	31	39																																												
0.3832	31	31.1	9.9	40.9	41	VA	66	79	25.1	38																																												
11.9	19.8	26.1	10.1	29.9	36.2	VA	60	73	30.1	36.8																																												
RADIATED EMISSION																																																						
Model Name : SUS31205			Temp. : 25																																																			
Model No. :			Humi. : 45																																																			
Serial No. :			Date : 2005/5/13 11:53																																																			
Points : 2			Test Equip. : R3132,ESPC																																																			
Detector : PEAK/QP			Load Line : 10mm																																																			
Polarization : Hori. & Vert.			Comment :																																																			
Power Supply : DC 12V																																																						
Limit: [EN 55022] Class A<3m>																																																						
							Limit(QP)		—																																													
							Horizontal(PEAK)		—																																													
							Vertical(PEAK)		—																																													
							Horizontal(QP)		○																																													
							Vertical(QP)		x																																													
							DC 12V																																															
							5V0.6A																																															
<table><tr><th>Frequency [MHz]</th><th>MeterReading (QP) [dBµV]</th><th>Ant. Type</th><th>Antenna Factor [dB/m]</th><th>Cable & Preamp [dB]</th><th>Level(QP) [dBµV/m]</th><th>Angle [°]</th><th>Height [cm]</th><th>Polar.</th><th>Limit [dBµV/m]</th><th>Margin [dB]</th></tr><tr><td>992.921</td><td>24</td><td>BL</td><td>25.4</td><td>-29.3</td><td>20.1</td><td>49</td><td>127</td><td>Hori.</td><td>57</td><td>36.9</td></tr><tr><td>30.775</td><td>28</td><td>BL</td><td>17.8</td><td>-32.3</td><td>13.5</td><td>181</td><td>121</td><td>Vert.</td><td>50</td><td>36.5</td></tr></table>											Frequency [MHz]	MeterReading (QP) [dBµV]	Ant. Type	Antenna Factor [dB/m]	Cable & Preamp [dB]	Level(QP) [dBµV/m]	Angle [°]	Height [cm]	Polar.	Limit [dBµV/m]	Margin [dB]	992.921	24	BL	25.4	-29.3	20.1	49	127	Hori.	57	36.9	30.775	28	BL	17.8	-32.3	13.5	181	121	Vert.	50	36.5											
Frequency [MHz]	MeterReading (QP) [dBµV]	Ant. Type	Antenna Factor [dB/m]	Cable & Preamp [dB]	Level(QP) [dBµV/m]	Angle [°]	Height [cm]	Polar.	Limit [dBµV/m]	Margin [dB]																																												
992.921	24	BL	25.4	-29.3	20.1	49	127	Hori.	57	36.9																																												
30.775	28	BL	17.8	-32.3	13.5	181	121	Vert.	50	36.5																																												

COSEL

Conditions

Test : EMI
Model Name : SUS/SUW 312

○Photographs of Test Set-Up

LINE CONDUCTION



RADIATED EMISSION



○Testing circuitry

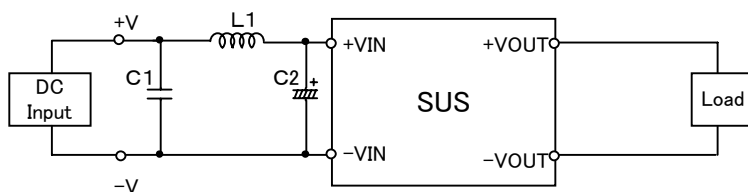


Fig.1 Testing circuitry 1

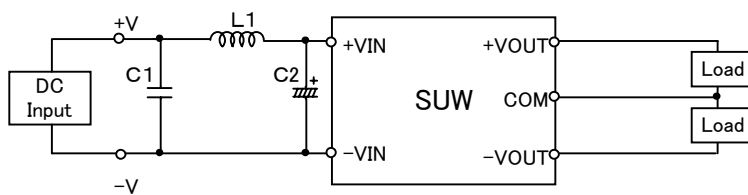


Fig.2 Testing circuitry 2

L1 :	4.7 μ H	CY3H-4R7	(KORIN ELECTRONICS)
C1 :	25V 1 μ F	C2012JB1E105K	(TDK)
C2 :	25V 100 μ F	UPW1E101M	(NICHICON)