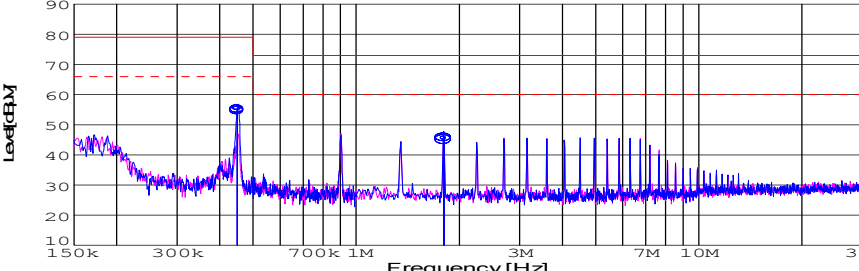
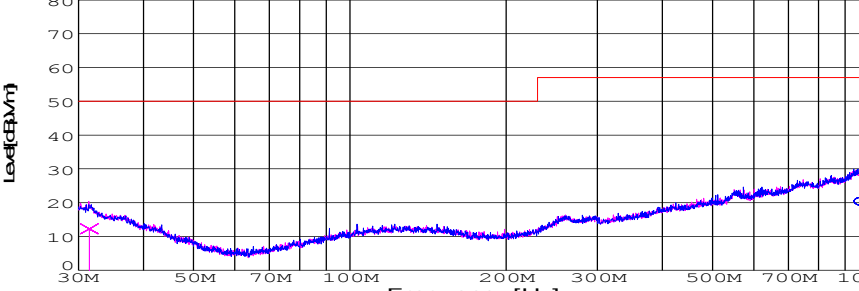


DATA SHEET							Date	17-May-05																																			
Model	SUS1R54805						Temp.	25degreeC																																			
Test	EMI Line conduction & Radiated emission						Humid.	45 %RH																																			
							Tested by	T.Ohara																																			
LINE CONDUCTION																																											
Model Name : SUS1R54805			Temp. : 25degreeC																																								
Model No. : -			Humi. : 45%																																								
Serial No. : -			Date : 2004/10/14 21:02																																								
Points : 2			Test Equip. : R3132,ESPC																																								
Detector : PEAK/QP/Ave.			Load Line : 10mm																																								
Line Mode : VA			Comment : -																																								
Power Supply : DC 48V																																											
Limit1: [EN 55022] Class A(QP)																																											
Limit2: [EN 55022] Class A(Ave.)																																											
							Limit1(QP)		—																																		
							Limit2(Ave.)		- - -																																		
							VA(PEAK)		—																																		
							VB(PEAK)		- - -																																		
							VA(QP)		—																																		
							VA(Ave.)		- - -																																		
							Vin : DC48V																																				
							Iout : 0.3A																																				
<table><tr><th>Frequency [MHz]</th><th>Meter Reading (Ave.)[dBuV]</th><th>Meter Reading (QP)[dBuV]</th><th>Factor [dB]</th><th>Level(Ave.) [dBuV]</th><th>Level(QP) [dBuV]</th><th>Line</th><th>Limit(Ave.) [dBuV]</th><th>Limit(QP) [dBuV]</th><th>Margin(Ave.) [dB]</th><th>Margin(QP) [dB]</th></tr><tr><td>0.4499</td><td>45.3</td><td>44.7</td><td>9.9</td><td>55.2</td><td>54.6</td><td>VA</td><td>66</td><td>79</td><td>10.8</td><td>24.4</td></tr><tr><td>1.8028</td><td>35.8</td><td>35.2</td><td>9.9</td><td>45.7</td><td>45.1</td><td>VA</td><td>60</td><td>73</td><td>14.3</td><td>27.9</td></tr></table>											Frequency [MHz]	Meter Reading (Ave.)[dBuV]	Meter Reading (QP)[dBuV]	Factor [dB]	Level(Ave.) [dBuV]	Level(QP) [dBuV]	Line	Limit(Ave.) [dBuV]	Limit(QP) [dBuV]	Margin(Ave.) [dB]	Margin(QP) [dB]	0.4499	45.3	44.7	9.9	55.2	54.6	VA	66	79	10.8	24.4	1.8028	35.8	35.2	9.9	45.7	45.1	VA	60	73	14.3	27.9
Frequency [MHz]	Meter Reading (Ave.)[dBuV]	Meter Reading (QP)[dBuV]	Factor [dB]	Level(Ave.) [dBuV]	Level(QP) [dBuV]	Line	Limit(Ave.) [dBuV]	Limit(QP) [dBuV]	Margin(Ave.) [dB]	Margin(QP) [dB]																																	
0.4499	45.3	44.7	9.9	55.2	54.6	VA	66	79	10.8	24.4																																	
1.8028	35.8	35.2	9.9	45.7	45.1	VA	60	73	14.3	27.9																																	
RADIATED EMISSION																																											
Model Name : SUS1R54805			Temp. : 25degreeC																																								
Model No. : -			Humi. : 45%																																								
Serial No. : -			Date : 2005/5/10 17:20																																								
Points : 2			Test Equip. : R3132,ESPC																																								
Detector : PEAK/QP			Load Line : 10mm																																								
Polarization : Hori. & Vert.			Comment : -																																								
Power Supply : DC 48V																																											
Limit: [EN 55022] Class A<3m>																																											
							Limit(QP)		—																																		
							Horizontal(PEAK)		—																																		
							Vertical(PEAK)		- - -																																		
							Horizontal(QP)		—																																		
							Vertical(QP)		- - -																																		
							Vin : DC48V																																				
							Iout : 0.3A																																				
<table><tr><th>Frequency [MHz]</th><th>MeterReading (QP)[dBuV/m]</th><th>Ant. Type</th><th>Antenna Factor[dB/m]</th><th>Cable & Preamp[dB]</th><th>Level(QP) [dBuV/m]</th><th>Angle [°]</th><th>Height[cm]</th><th>Polar.</th><th>Limit [dBuV/m]</th><th>Margin [dB]</th></tr><tr><td>970.817</td><td>24.3</td><td>BL</td><td>25.3</td><td>-29.3</td><td>20.3</td><td>150</td><td>148</td><td>Hori.</td><td>57</td><td>36.7</td></tr><tr><td>31.477</td><td>26.9</td><td>BL</td><td>17.5</td><td>-32.2</td><td>12.2</td><td>97</td><td>134</td><td>Vert.</td><td>50</td><td>37.8</td></tr></table>											Frequency [MHz]	MeterReading (QP)[dBuV/m]	Ant. Type	Antenna Factor[dB/m]	Cable & Preamp[dB]	Level(QP) [dBuV/m]	Angle [°]	Height[cm]	Polar.	Limit [dBuV/m]	Margin [dB]	970.817	24.3	BL	25.3	-29.3	20.3	150	148	Hori.	57	36.7	31.477	26.9	BL	17.5	-32.2	12.2	97	134	Vert.	50	37.8
Frequency [MHz]	MeterReading (QP)[dBuV/m]	Ant. Type	Antenna Factor[dB/m]	Cable & Preamp[dB]	Level(QP) [dBuV/m]	Angle [°]	Height[cm]	Polar.	Limit [dBuV/m]	Margin [dB]																																	
970.817	24.3	BL	25.3	-29.3	20.3	150	148	Hori.	57	36.7																																	
31.477	26.9	BL	17.5	-32.2	12.2	97	134	Vert.	50	37.8																																	

COSEL

Conditions

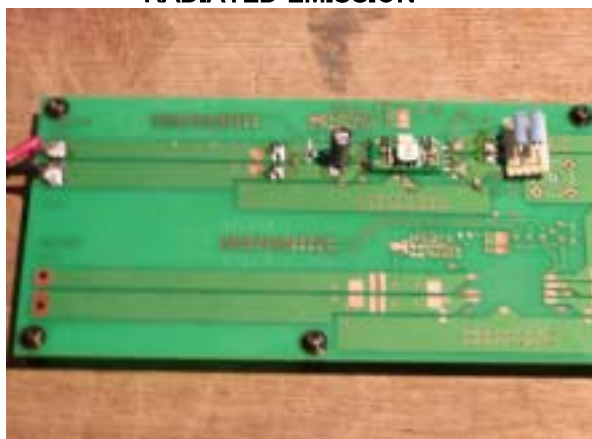
Test : EMI
Model Name : SUS/SUW 1R548

○Photographs of Test Set-Up

LINE CONDUCTION



RADIATED EMISSION



○Testing circuitry

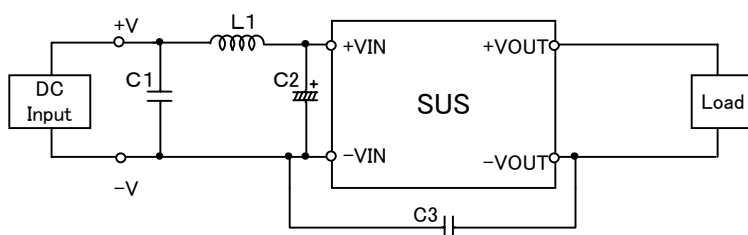


Fig.1 Testing circuitry 1

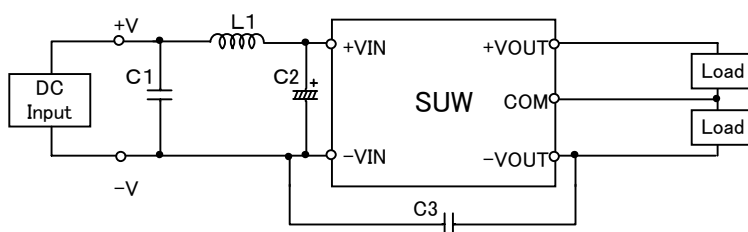


Fig.2 Testing circuitry 2

L1 :	10 μ H	GLF2518T100K	(TDK)
C1 :	100V 0.47 μ F	C3216JB2A474K	(TDK)
C2 :	100V 10 μ F	UPW2A100M	(NICHICON)
C3 :	1000V 470pF	GRM31BR33A471K	(MURATA)