

Date	17-May-05
Temp.	25degreeC
Humid.	45 %RH
Tested by	T.Ohara

Vin : DC24V
Iout : 0.13A

Frequency [MHz]	Meter Reading (Ave.)[dBuV]	Meter Reading (QP)[dBuV]	Factor [dB]	Level(Ave.) [dBuV]	Level(QP) [dBuV]	Line	Limit(Ave.) [dBuV]	Limit(QP) [dBuV]	Margin(Ave.) [dB]	Margin(QP) [dB]
0.4872	40.8	40.2	9.9	50.7	50.1	VA	66	79	15.3	28.9
1.9493	37.1	36.7	9.9	47	46.6	VA	60	73	13	26.4
6.3322	33.2	33.9	10	43.2	43.9	VA	60	73	16.8	29.1
0.1661	24.1	29.6	9.8	33.9	39.4	VB	66	79	32.1	39.6

Vin : DC24V
Iout : 0.13A

Frequency [MHz]	MeterReading (QP)[dBuV]	Ant. Type	Antenna Factor[dB/m]	Cable & Preamp[dB]	Level(QP) [dBuV/m]	Angle [°]	Height[cm]	Polar.	Limit [dBuV/m]	Margin [dB]
950.779	23.9	BL	25.1	-29.3	19.7	205	101	Hori.	57	37.3
306.45	43.2	BL	13.2	-30.9	25.5	358	110	Hori.	57	31.5
36.947	34.7	BL	14.7	-32.2	17.2	233	107	Vert.	50	32.8

COSEL

Conditions

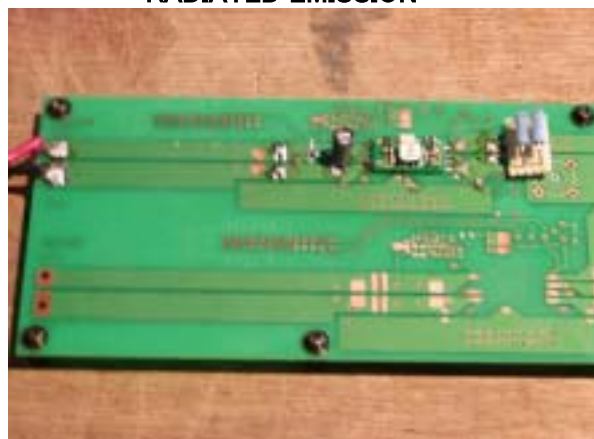
Test : EMI
Model Name : SUS/SUW 1R524

○Photographs of Test Set-Up

LINE CONDUCTION



RADIATED EMISSION



○Testing circuitry

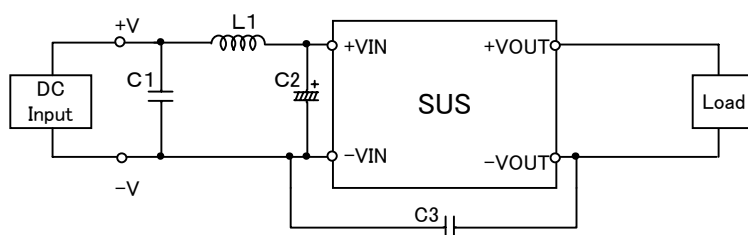


Fig.1 Testing circuitry 1

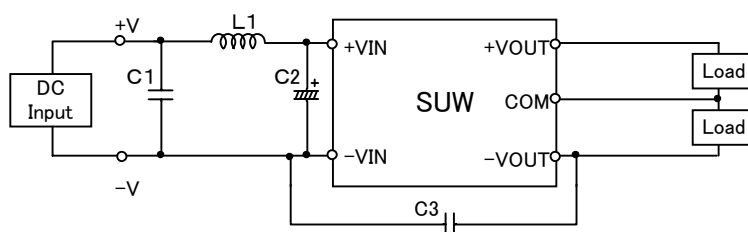


Fig.2 Testing circuitry 2

L1 :	10 μ H	GLF2518T100K	(TDK)
C1 :	50V 0.47 μ F	C2012JB1H474K	(TDK)
C2 :	50V 33 μ F	UPW1H330M	(NICHICON)
C3 :	1000V 100pF	GRM31AR33A101K	(MURATA)