

DATA SHEET

Model SUS104812

Date 14-Mar-05

Test

EMI
Line conduction & Radiated emission

Temp. 25degreeC

Humid. 45 %RH

Tested by C.Makino

LINE CONDUCTION

Model Name : SUS104812

Model No. :

Serial No. :

Points :

Detector : PEAK/QP/Ave.

Line Mode : VA/VB

Power Supply : DC 48V

Limit1: [EN 55022] Class A(QP)

Limit2: [EN 55022] Class A(Ave.)

Temp. : 25degreeC

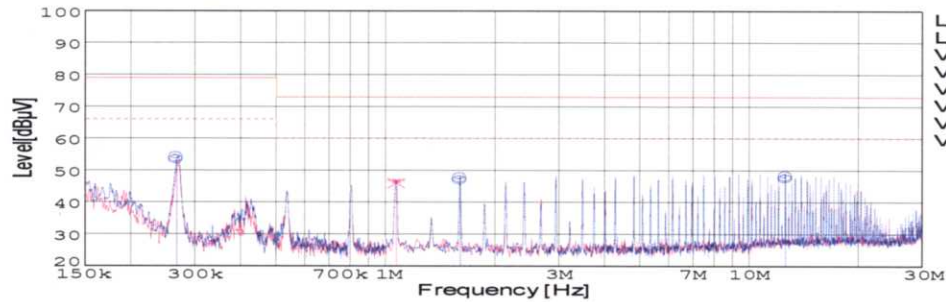
Humi. : 45%

Date : 2005/3/14 11:34

Test Equip. : R3132,ESPC

Load Line : 50mm

Comment : C.Makino



Limit1(QP)
Limit2(Ave.)
VA(PEAK)
VB(PEAK)
VA(QP)
VA(Ave.)
VB(QP)
VB(Ave.)

Vin: DC48V

Iout: 1A

Frequency [MHz]	Meter Reading (Ave.) [dBuV]	Meter Reading (QP) [dBuV]	Factor [dB]	Level(Ave.) [dBuV]	Level(QP) [dBuV]	Line	Limit(Ave.) [dBuV]	Limit(QP) [dBuV]	Margin(Ave.) [dB]	Margin(QP) [dB]
0.2663	44.4	43.6	9.8	54.2	53.4	VA	66	79	11.8	25.6
1.6016	37.8	37	9.9	47.7	46.9	VA	60	73	12.3	26.1
12.5461	38.1	37.3	10.2	48.3	47.5	VA	60	73	11.7	25.5
1.0678	36.9	36.1	9.9	46.8	46	VB	60	73	13.2	27

RADIATED EMISSION

Model Name : SUS104812

Model No. :

Serial No. :

Points :

Detector : PEAK/QP

Polarization : Vertical

Power Supply : DC 48V

Limit: [EN 55022] Class A<3m>

Temp. : 25degreeC

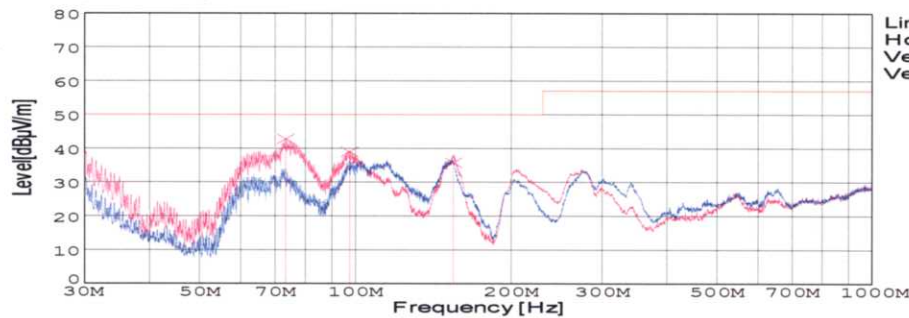
Humi. : 45%

Date : 2005/3/14 10:52

Test Equip. : R3132,ESPC

Load Line : 50mm

Comment : C.Makino



Limit(QP)
Horizontal(PEAK)
Vertical(PEAK)
Vertical(QP)

Vin: DC48V

Iout: 1A

Frequency [MHz]	MeterReading (QP) [dBuV]	Ant. Type	Antenna Factor [dB/m]	Cable & Preamp [dB]	Level(QP) [dBuV/m]	Angle [°]	Height [cm]	Polar.	Limit [dBuV/m]	Margin [dB]
73.189	68.8	BL	6	-31.9	42.9	248	102	Vert.	50	7.1
97.22	61.4	BL	9.5	-31.8	39.1	183	113	Vert.	50	10.9
154.319	57	BL	10.3	-31.5	35.8	64	160	Vert.	50	14.2

COSEL

Conditions

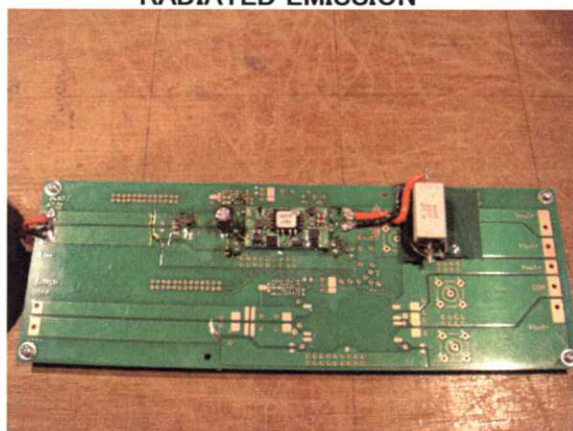
Test : EMI
Model Name : SUS/SUW1048

○Photographs of Test Set-Up

LINE CONDUCTION



RADIATED EMISSION



○Testing circuitry

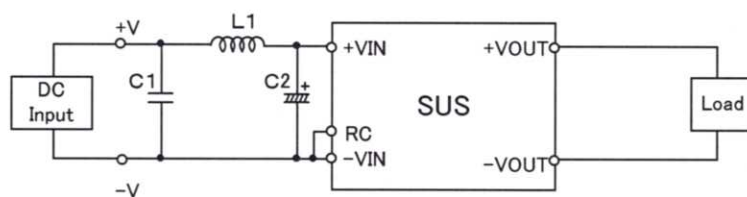


Fig.1 Testing circuitry 1

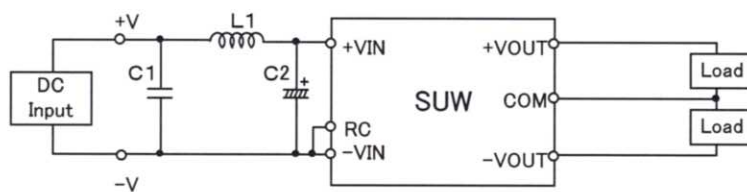


Fig.2 Testing circuitry 2

L1 : 10 μ H	CY3H-100	(KORIN ELECTRONICS)
C1 : 100V 2.2 μ F	C4532JB2A225M	(TDK)
C2 : 100V 47 μ F	UPW2A470M	(NICHICON)