

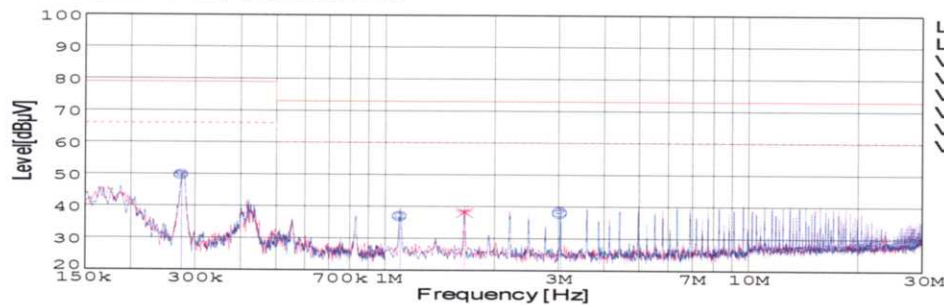
## DATA SHEET

DATA SHEET		Date	12-Mar-05
Model	SUS101212	Temp.	25degreeC
Test	EMI Line conduction & Radiated emission	Humid.	45 %RH
		Tested by	C.Makino

### LINE CONDUCTION

Model Name : SUS101212  
Model No. :  
Serial No. :  
Points : 4  
Detector : PEAK/QP/Ave.  
Line Mode : VA/VB  
Power Supply : DC 12V  
Limit1: [EN 55022] Class A(QP)  
Limit2: [EN 55022] Class A(Ave.)

Temp. : 25degreeC  
Humi. : 45%  
Date : 2005/3/12 15:16  
Test Equip. : R3132,ESPC  
Load Line : 50mm  
Comment : C.Makino



Limit1(QP)  
Limit2(Ave.)  
VA(PEAK)  
VB(PEAK)  
VA(QP)  
VA(Ave.)  
VB(QP)  
VB(Ave.)

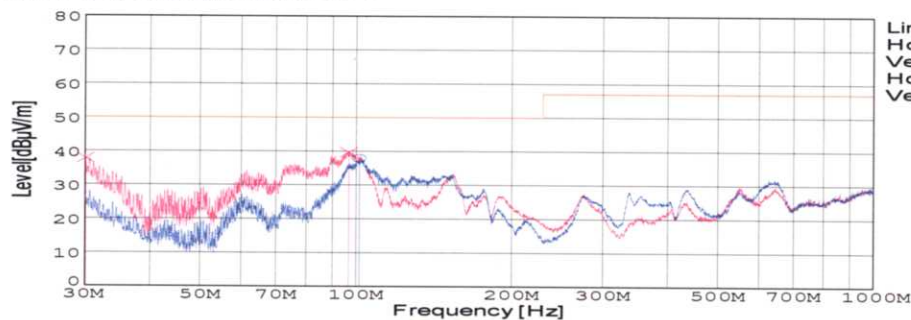
Vin: DC12V  
Iout: 1A

Frequency [MHz]	Meter Reading (Ave.) [dBuV]	Meter Reading (QP) [dBuV]	Factor [dB]	Level(Ave.) [dBuV]	Level(QP) [dBuV]	Line	Limit(Ave.) [dBuV]	Limit(QP) [dBuV]	Margin(Ave.) [dB]	Margin(QP) [dB]
0.2752	40.2	39.7	9.8	50	49.5	VA	66	79	16	29.5
1.1035	27.2	26.9	9.9	37.1	36.8	VA	60	73	22.9	36.2
3.0365	28.4	28	9.9	38.3	37.9	VA	60	73	21.7	35.1
1.6563	28.6	28.2	9.9	38.5	38.1	VB	60	73	21.5	34.9

### RADIATED EMISSION

Model Name : SUS101212  
Model No. :  
Serial No. :  
Points : 3  
Detector : PEAK/QP  
Polarization : Hori. & Vert.  
Power Supply : DC 12V  
Limit: [EN 55022] Class A<3m>

Temp. : 25degreeC  
Humi. : 45%  
Date : 2005/3/9 14:59  
Test Equip. : R3132,ESPC  
Load Line : 50mm  
Comment : C.Makino



Limit(QP)  
Horizontal(PEAK)  
Vertical(PEAK)  
Horizontal(QP)  
Vertical(QP)

Vin: DC12V  
Iout: 1A

Frequency [MHz]	Meter Reading (QP) [dBuV]	Ant. Type	Antenna Factor [dB/m]	Cable & Preamp [dB]	Level(QP) [dBuV/m]	Angle [°]	Height [cm]	Polar.	Limit [dBuV/m]	Margin [dB]
101.66	59.7	BL	9.9	-31.7	37.9	343	157	Hori.	50	12.1
30.126	52.2	BL	18.1	-32.3	38	244	100	Vert.	50	12
96.968	62.1	BL	9.5	-31.8	39.8	294	124	Vert.	50	10.2



## Conditions

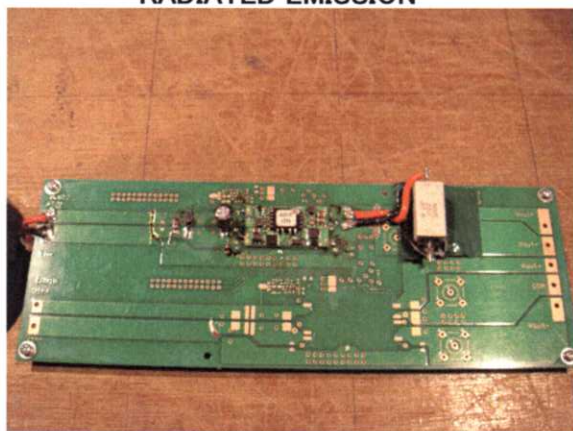
Test : EMI  
Model Name : SUS/SUW1012

○Photographs of Test Set-Up

### LINE CONDUCTION



### RADIATED EMISSION



○Testing circuitry

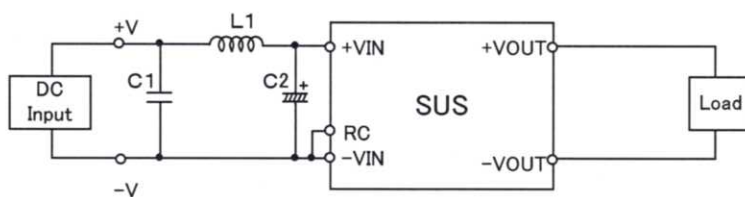


Fig.1 Testing circuitry 1

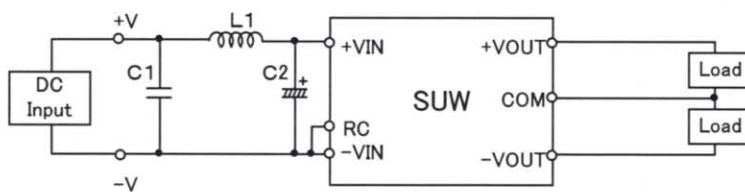


Fig.2 Testing circuitry 2

L1 : 1 $\mu$ H	CI4-1R0	(KORIN ELECTRONICS)
C1: 25V 10 $\mu$ F	C3225JB1E106M	(TDK)
C2: 25V 220 $\mu$ F	UPW1E221M	(NICHICON)