

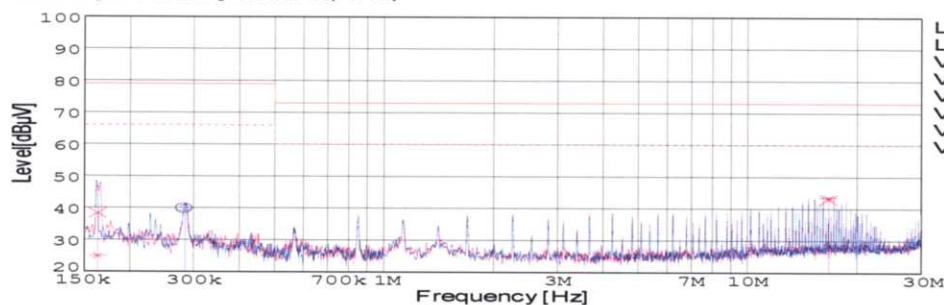
DATA SHEET

Model		SUS100512	Date	01-Mar-05
Test		EMI Line conduction & Radiated emission	Temp.	25degreeC
			Humid.	45 %RH
			Tested by	C.Makino

LINE CONDUCTION

Model Name : SUS100512
 Model No. :
 Serial No. :
 Points : 3
 Detector : PEAK/QP/Ave.
 Line Mode : VA/VB
 Power Supply : DC 5V
 Limit1: [EN 55022] Class A(QP)
 Limit2: [EN 55022] Class A(Ave.)

Temp. : 25degreeC
 Humi. : 45%
 Date : 2005/3/1 15:53
 Test Equip. : R3132,ESPC
 Load Line : 50mm
 Comment : C.Makino



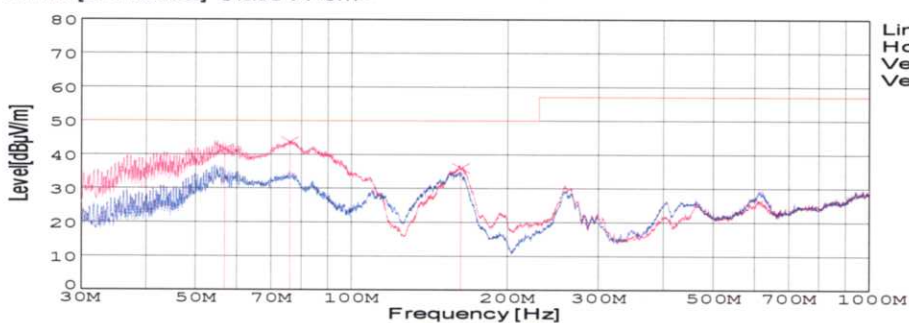
Vin: DC5V
Iout: 0.9A

Frequency [MHz]	Meter Reading (Ave.) [dBuV]	Meter Reading (QP) [dBuV]	Factor [dB]	Level(Ave.) [dBuV]	Level(QP) [dBuV]	Line	Limit(Ave.) [dBuV]	Limit(QP) [dBuV]	Margin(Ave.) [dB]	Margin(QP) [dB]
0.2835	30.4	30	9.8	40.2	39.8	VA	66	79	25.8	39.2
0.163	15.1	28.6	9.8	24.9	38.4	VB	66	79	41.1	40.6
16.661	33.4	32.8	10.2	43.6	43	VB	60	73	16.4	30

RADIATED EMISSION

Model Name : SUS100512
 Model No. :
 Serial No. :
 Points : 3
 Detector : PEAK/QP
 Polarization : Vertical
 Power Supply : DC 5V
 Limit: [EN 55022] Class A<3m>

Temp. : 25degreeC
 Humi. : 45%
 Date : 2005/2/22 21:06
 Test Equip. : R3132,ESPC
 Load Line : 50mm
 Comment : C.Makino



Vin: DC5V
Iout: 0.9A

Frequency [MHz]	MeterReading (QP) [dBuV]	Ant. Type	Antenna Factor [dB/m]	Cable & Preamp [dB]	Level(QP) [dBuV/m]	Angle [°]	Height [cm]	Polar.	Limit [dBuV/m]	Margin [dB]
56.853	68.6	BL	5.2	-32.1	41.7	122	106	Vert.	50	8.3
76.077	69.3	BL	6.5	-31.9	43.9	117	105	Vert.	50	6.1
162.617	58	BL	9.6	-31.5	36.1	41	160	Vert.	50	13.9

COSEL

Conditions

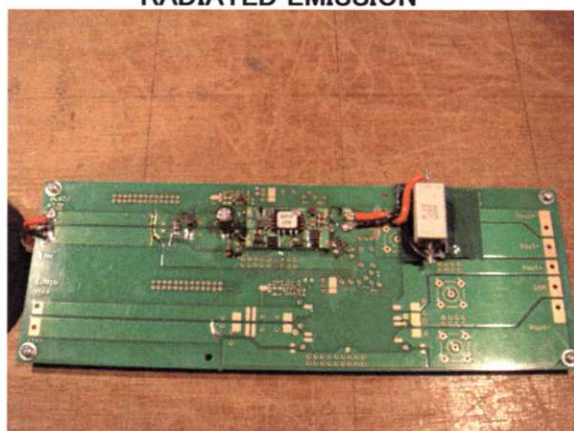
Test : EMI
Model Name : SUS/SUW1005

○Photographs of Test Set-Up

LINE CONDUCTION



RADIATED EMISSION



○Testing circuitry

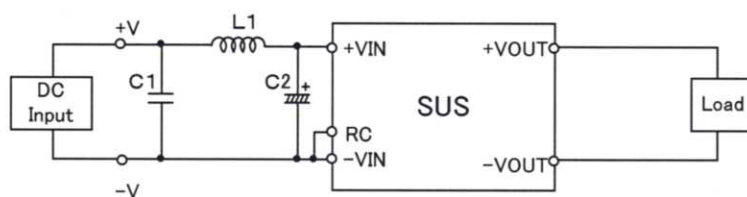


Fig.1 Testing circuitry 1

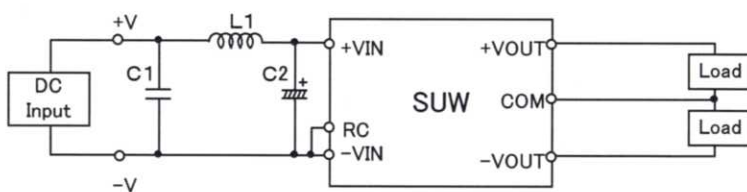


Fig.2 Testing circuitry 2

L1 : 0.5 μ H	CI4-0R5	(KORIN ELECTRONICS)
C1: 25V 22 μ F	GRM32ER71C226K	(MURATA)
C2: 25V 470 μ F	UPM1E471M	(NICHICON)