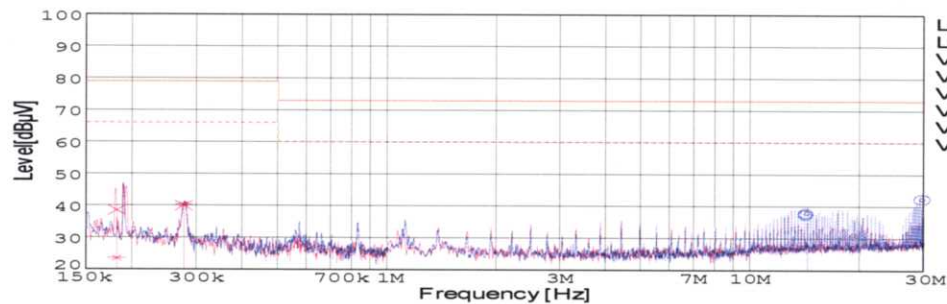


DATA SHEET		Date	01-Mar-05
Model	SUS100505	Temp.	25degreeC
Test	EMI Line conduction & Radiated emission	Humid.	45 %RH
		Tested by	C.Makino

LINE CONDUCTION

Model Name : SUS100505
 Model No. :
 Serial No. :
 Points : 4
 Detector : PEAK/QP/Ave.
 Line Mode : VA/VB
 Power Supply : DC 5V
 Limit1: [EN 55022] Class A(QP)
 Limit2: [EN 55022] Class A(Ave.)

Temp. : 25degreeC
 Humi. : 45%
 Date : 2005/3/1 16:13
 Test Equip. : R3132,ESPC
 Load Line : 50mm
 Comment : C.Makino



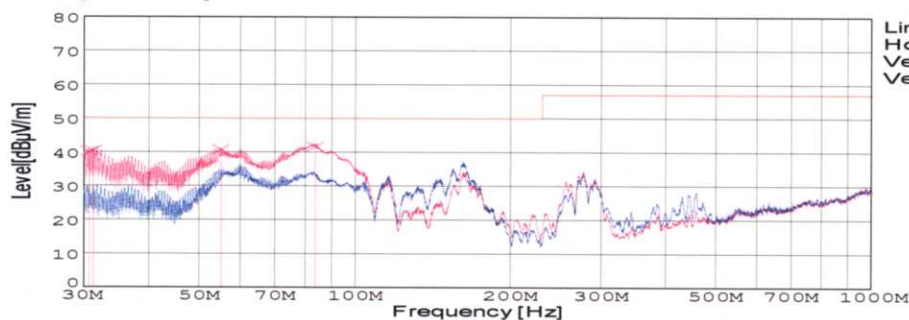
Vin: DC5V
 Iout: 2A

Frequency [MHz]	Meter Reading (Ave.) [dBuV]	Meter Reading (QP) [dBuV]	Factor [dB]	Level(Ave.) [dBuV]	Level(QP) [dBuV]	Line	Limit(Ave.) [dBuV]	Limit(QP) [dBuV]	Margin(Ave.) [dB]	Margin(QP) [dB]
14.3286	27.6	27.1	10.2	37.8	37.3	VA	60	73	22.2	35.7
29.7601	31.8	31.8	10.5	42.3	42.3	VA	60	73	17.7	30.7
0.1807	13.6	28.8	9.8	23.4	38.6	VB	66	79	42.6	40.4
0.2758	30.6	30.2	9.8	40.4	40	VB	66	79	25.6	39

RADIATED EMISSION

Model Name : SUS100505
 Model No. :
 Serial No. :
 Points : 4
 Detector : PEAK/QP
 Polarization : Vertical
 Power Supply : DC 5V
 Limit: [EN 55022] Class A<3m>

Temp. : 25degreeC
 Humi. : 45%
 Date : 2005/2/18 13:13
 Test Equip. : R3132,ESPC
 Load Line : 50mm
 Comment : C.Makino



Vin: DC5V
 Iout: 2A

Frequency [MHz]	Meter Reading (QP) [dBuV]	Ant. Type	Antenna Factor [dB/m]	Cable & Preamp [dB]	Level(QP) [dBuV/m]	Angle [°]	Height [cm]	Polar.	Limit [dBuV/m]	Margin [dB]
30.659	54.7	BL	17.9	-32.3	40.3	252	102	Vert.	50	9.7
31.201	55.2	BL	17.6	-32.3	40.5	234	100	Vert.	50	9.5
54.955	67.3	BL	5.7	-32.1	40.9	210	101	Vert.	50	9.1
83.362	65.9	BL	7.7	-31.9	41.7	172	114	Vert.	50	8.3

COSEL

Conditions

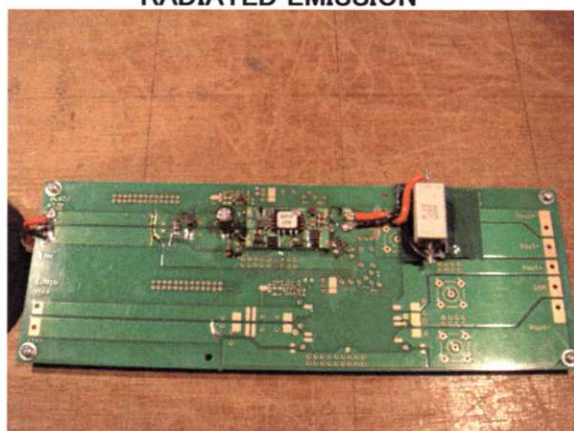
Test : EMI
Model Name : SUS/SUW1005

○Photographs of Test Set-Up

LINE CONDUCTION



RADIATED EMISSION



○Testing circuitry

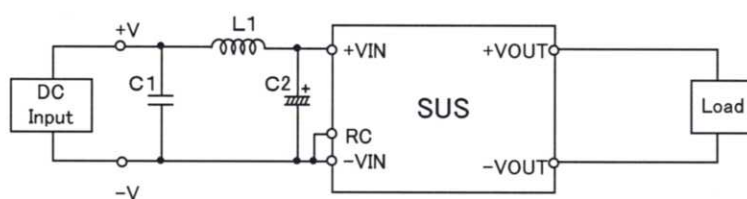


Fig.1 Testing circuitry 1

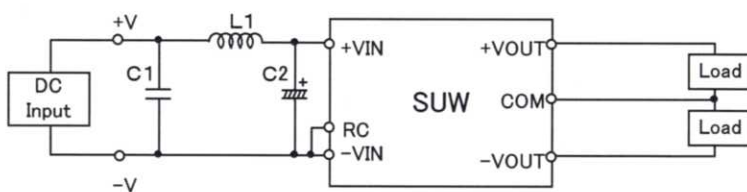


Fig.2 Testing circuitry 2

L1 : 0.5 μ H	CI4-0R5	(KORIN ELECTRONICS)
C1: 25V 22 μ F	GRM32ER71C226K	(MURATA)
C2: 25V 470 μ F	UPM1E471M	(NICHICON)