

DATA SHEET							Date	14-Mar-05
Model	SUCS104812						Temp.	25degreeC
Test	EMI Line conduction & Radiated emission						Humid.	45 %RH
							Tested by	C.Makino

LINE CONDUCTION
Model Name : SUCS104812
Model No. :
Serial No. :
Points : 3
Detector : PEAK/QP/Ave.
Line Mode : VA/VB
Power Supply : DC 48V
Limit1: [EN 55022] Class A(QP)
Limit2: [EN 55022] Class A(Ave.)

Temp. : 25degreeC
Humi. : 45%
Date : 2005/3/14 11:29
Test Equip. : R3132,ESPC
Load Line : 50mm
Comment : C.Makino

Limit1(QP)
Limit2(Ave.)
VA(PEAK)
VB(PEAK)
VA(QP)
VA(Ave.)
VB(QP)
VB(Ave.)

Vin: DC48V
Iout: 1A

Frequency [MHz]	Meter Reading (Ave.) [dBuV]	Meter Reading (QP) [dBuV]	Factor [dB]	Level(Ave.) [dBuV]	Level(QP) [dBuV]	Line	Limit(Ave.) [dBuV]	Limit(QP) [dBuV]	Margin(Ave.) [dB]	Margin(QP) [dB]
0.2667	45	44.2	9.8	54.8	54	VA	66	79	11.2	25
1.6021	37.2	36.4	9.9	47.1	46.3	VA	60	73	12.9	26.7
1.0678	36.3	35.5	9.9	46.2	45.4	VB	60	73	13.8	27.6

RADIATED EMISSION
Model Name : SUCS104812
Model No. :
Serial No. :
Points : 4
Detector : PEAK/QP
Polarization : Hori. & Vert.
Power Supply : DC 48V
Limit: [EN 55022] Class A<3m>

Temp. : 25degreeC
Humi. : 45%
Date : 2005/3/14 11:11
Test Equip. : R3132,ESPC
Load Line : 50mm
Comment : C.Makino

Limit(QP)
Horizontal(PEAK)
Vertical(PEAK)
Horizontal(QP)
Vertical(QP)

Vin: DC48V
Iout: 1A

Frequency [MHz]	MeterReading (QP) [dBuV]	Ant. Type	Antenna Factor [dB/m]	Cable & Preamp [dB]	Level(QP) [dBuV/m]	Angle [°]	Height [cm]	Polar.	Limit [dBuV/m]	Margin [dB]
108.682	59.1	BL	10.6	-31.7	38	161	153	Hori.	50	12
153.83	58.8	BL	10.3	-31.5	37.6	142	160	Hori.	50	12.4
73.177	64.3	BL	6	-31.9	38.4	181	100	Vert.	50	11.6
210.949	60.6	BL	8.7	-31.3	38	323	120	Vert.	50	12

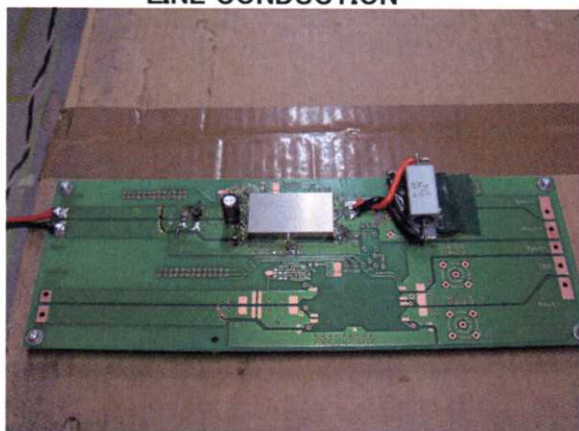


Conditions

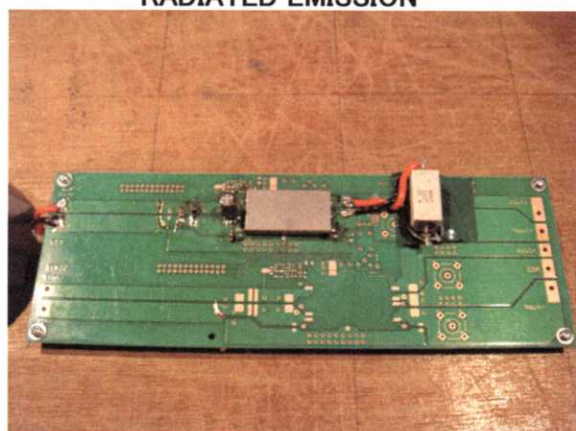
Test : EMI
Model Name : SUCS/SUCW1048

○Photographs of Test Set-Up

LINE CONDUCTION



RADIATED EMISSION



○Testing circuitry

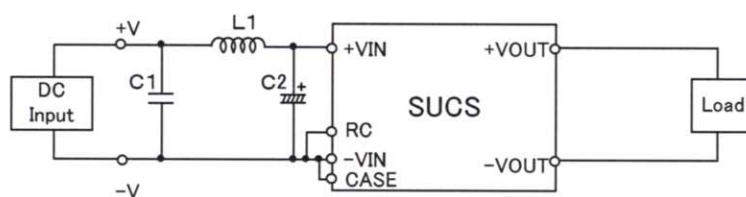


Fig.1 Testing circuitry 1

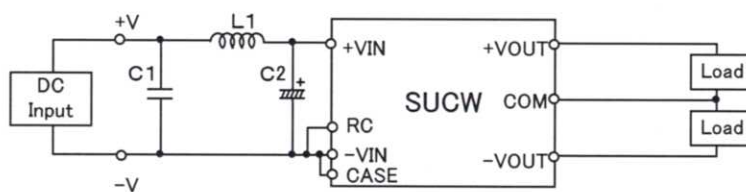


Fig.2 Testing circuitry 2

L1 : 10 μ H	CY3H-100	(KORIN ELECTRONICS)
C1 : 100V 2.2 μ F	C4532JB2A225M	(TDK)
C2 : 100V 47 μ F	UPW2A470M	(NICHICON)