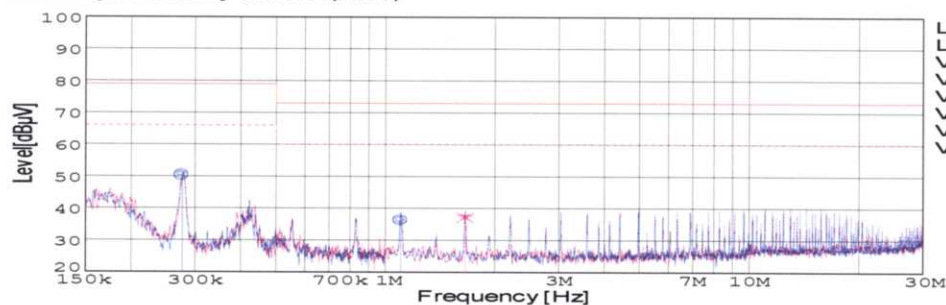


DATA SHEET		Date	12-Mar-05
Model	SUCS101212	Temp.	25degreeC
Test	EMI Line conduction & Radiated emission	Humid.	45 %RH
		Tested by	C.Makino

LINE CONDUCTION

Model Name : SUCS101212
 Model No. :
 Serial No. :
 Points : 3
 Detector : PEAK/QP/Ave.
 Line Mode : VA/VB
 Power Supply : DC 12V
 Limit1: [EN 55022] Class A(QP)
 Limit2: [EN 55022] Class A(Ave.)

Temp. : 25degreeC
 Humi. : 45%
 Date : 2005/3/12 15:08
 Test Equip. : R3132,ESPC
 Load Line : 50mm
 Comment : C.Makino



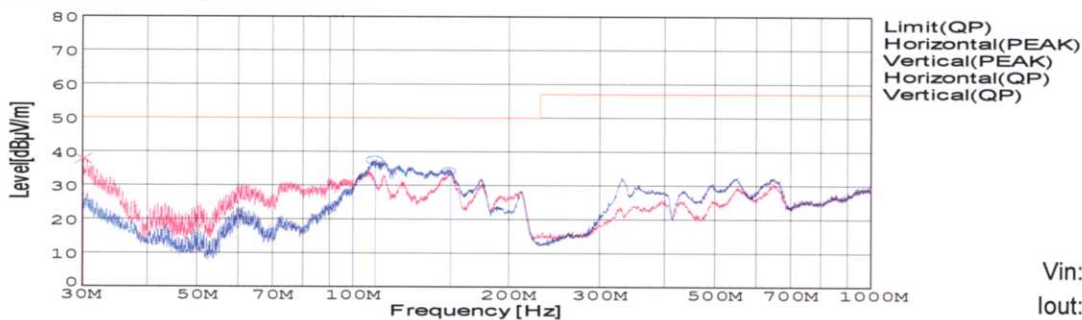
Vin: DC12V
 Iout: 1A

Frequency [MHz]	Meter Reading (Ave.) [dBuV]	Meter Reading (QP) [dBuV]	Factor [dB]	Level(Ave.) [dBuV]	Level(QP) [dBuV]	Line	Limit(Ave.) [dBuV]	Limit(QP) [dBuV]	Margin(Ave.) [dB]	Margin(QP) [dB]
0.2762	40.9	40.4	9.8	50.7	50.2	VA	66	79	15.3	28.8
1.1028	26.7	26.4	9.9	36.6	36.3	VA	60	73	23.4	36.7
1.6543	27.7	27.3	9.9	37.6	37.2	VB	60	73	22.4	35.8

RADIATED EMISSION

Model Name : SUCS101212
 Model No. :
 Serial No. :
 Points : 3
 Detector : PEAK/QP
 Polarization : Hori. & Vert.
 Power Supply : DC 12V
 Limit: [EN 55022] Class A<3m>

Temp. : 25degreeC
 Humi. : 45%
 Date : 2005/3/9 14:39
 Test Equip. : R3132,ESPC
 Load Line : 50mm
 Comment : C.Makino



Vin: DC12V
 Iout: 1A

Frequency [MHz]	Meter Reading (QP) [dBuV]	Ant. Type	Antenna Factor [dB/m]	Cable & Preamp [dB]	Level(QP) [dBuV/m]	Angle [°]	Height [cm]	Polar.	Limit [dBuV/m]	Margin [dB]
110.466	58.3	BL	10.7	-31.7	37.3	163	150	Hori.	50	12.7
154.392	55.4	BL	10.3	-31.5	34.2	138	156	Hori.	50	15.8
30.124	52.1	BL	18.1	-32.3	37.9	261	100	Vert.	50	12.1

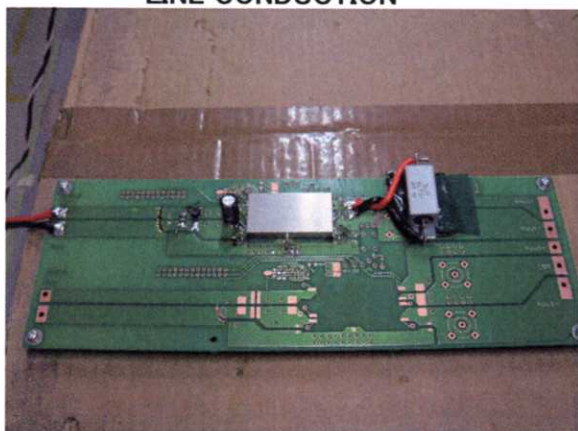


Conditions

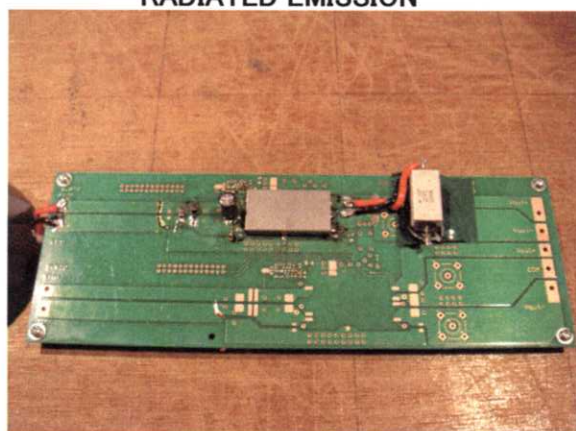
Test : EMI
Model Name : SUCS/SUCW1012

○Photographs of Test Set-Up

LINE CONDUCTION



RADIATED EMISSION



○Testing circuitry

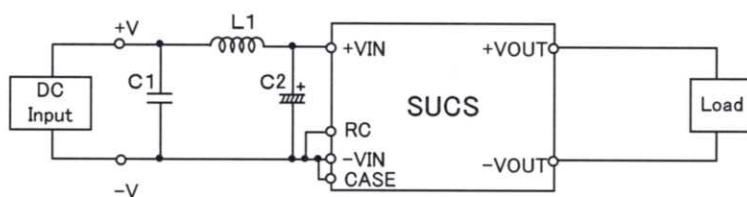


Fig.1 Testing circuitry 1

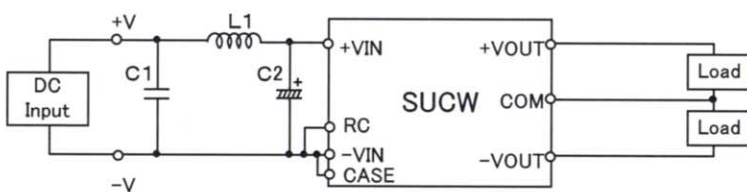


Fig.2 Testing circuitry 2

L1 : 1 μ H	CI4-1R0	(KORIN ELECTRONICS)
C1: 25V 10 μ F	C3225JB1E106M	(TDK)
C2: 25V 220 μ F	UPW1E221M	(NICHICON)