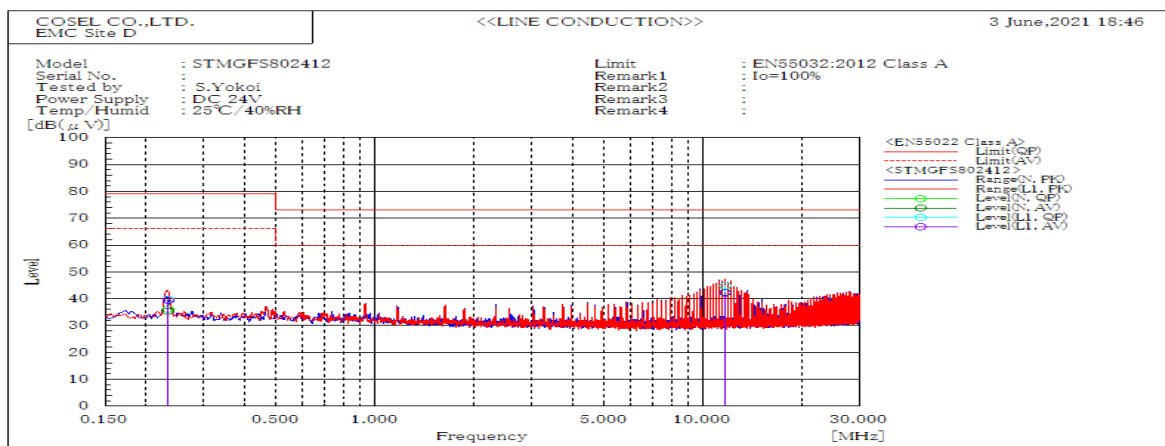
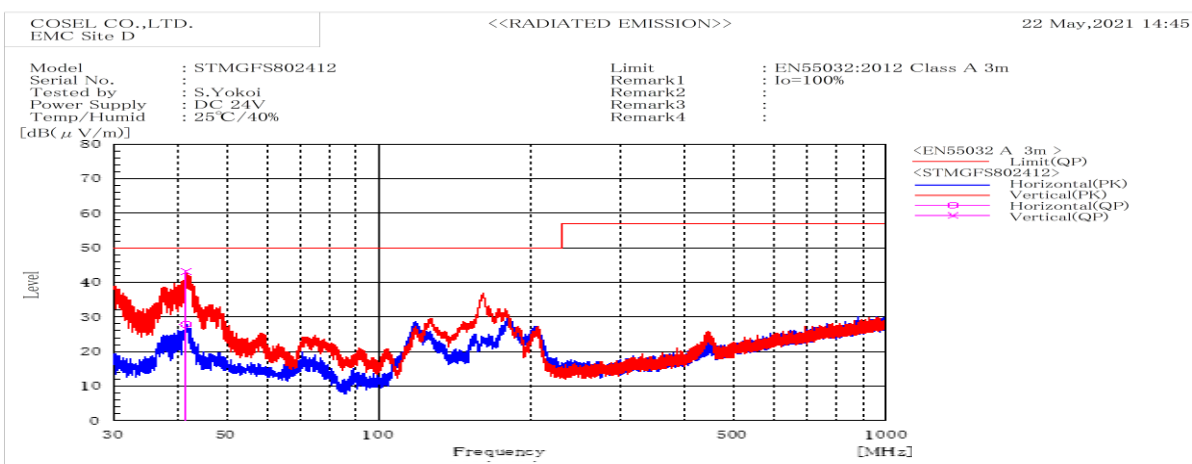


DATA SHEET

Model	STMGFS802412	Date	08-Jul-21
Test	EMI	Temp.	25 degreeC
	Line conduction & Radiated emission	Humid.	40 %RH
		Tested by	S.Yokoi



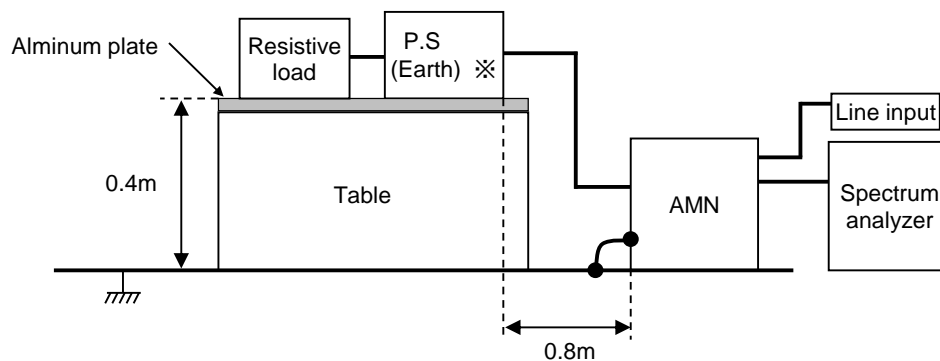
Frequency	Line	Level	Limit	Margin	Pass/Fail	Remark
MHz		dB(μV)	dB(μV)	dB		
		QP	AV	QP	AV	
0.234	L1	39.8	39.4	79	66	39.2 26.6 Pass
11.662	L1	44.9	42.2	73	60	28.1 17.8 Pass
0.233	N	36.1	35.4	79	66	42.9 30.6 Pass
11.661	N	44.8	42.4	73	60	28.2 17.6 Pass



Frequency	Polarization	Stability	Level	Limit	Margin	Pass/Fail	Height	Angle	Remark
MHz			dB(μV/m)	dB(μV/m)	dB		cm	deg	
			QP	QP	QP				
41.571	V	Stable	43.2	50	6.8	Pass	101.4	348.3	
41.569	H	Stable	27.9	50	22.1	Pass	178	43.7	

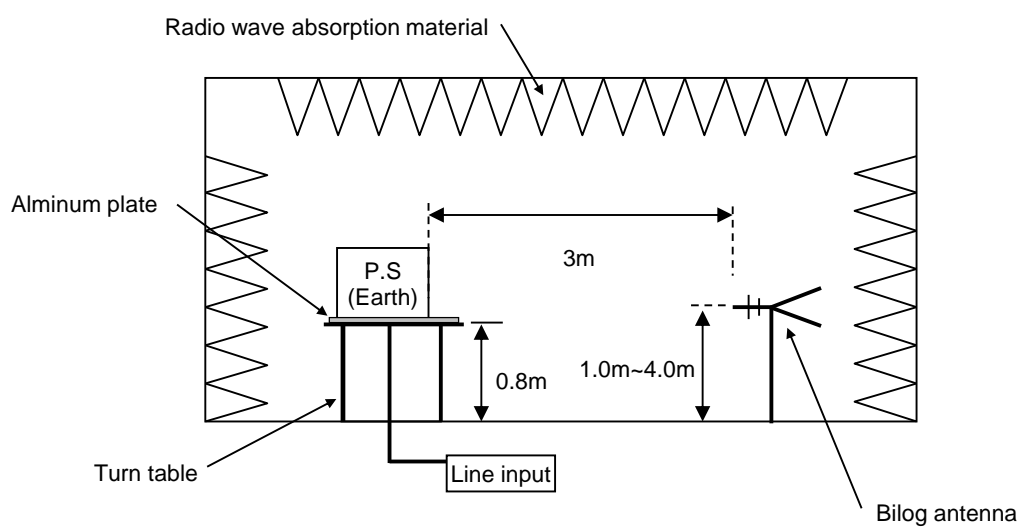
DATA SHEET		Date	08-Jul-21
Model	Circuit used for measurement	Temp.	25 degreeC
Test	EMI Line conduction & Radiated emission	Humid.	40 %RH
		Tested by	S.Yokoi

1. Line conduction



※External capacitor on the input side : 220 μ F

2. Radiated emission



Conditions

Test : EMI

Model Name : STMGFS80□□

○Photographs of Test Set-Up LINE CONDUCTION



RADIATED EMISSION



○Testing circuitry

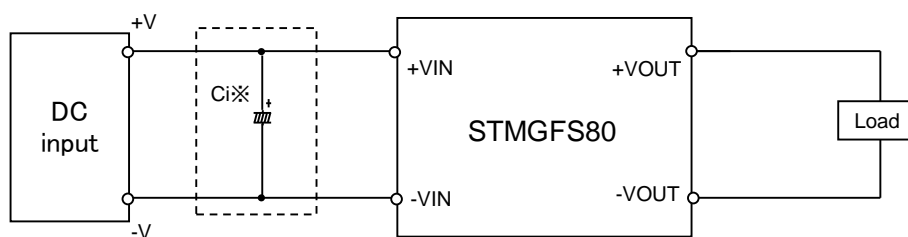


Fig.1 Testing circuitry

※Ci : External capacitor on the input side when LINE CONDUCTION

Ci : STMGFS8024□□ 220 μ F
STMGFS8048□□ 120 μ F