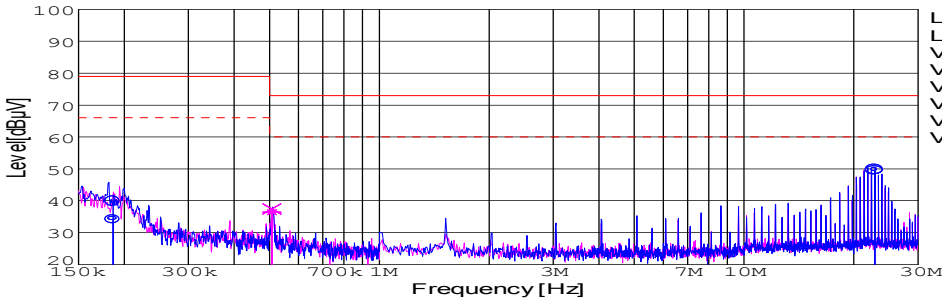
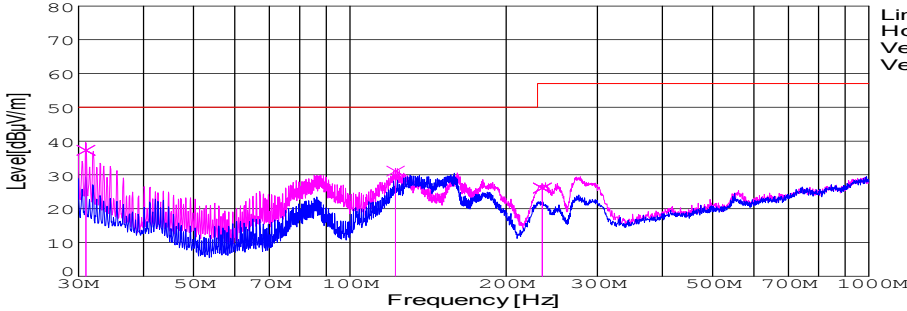


DATA SHEET							Date	05-Oct-07		
Model	SFS302415						Temp.	25 degreeC		
Test	EMI Line conduction & Radiated emission						Humid.	45 %RH		
							Tested by	Y.Miyawaki		
LINE CONDUCTION										
Model Name : SFS302415			Temp. : 25degreeC							
Model No. :			Humi. : 45%							
Serial No. :			Date : 2007/10/5 16:58							
Points : 3			Test Equip. : R3132,ESPC							
Detector : PEAK/QP/Ave.			Load Line : 100mm							
Line Mode : VA/VB			Comment : Vo = 15.0V , Io = 2.0A							
Power Supply : DC 24V										
Limit1: [CISPR Pub11] Class A Gr.1(QP)										
Limit2: [CISPR Pub11] Class A Gr.1(Ave.)										
							<div>Limit1(QP) ———</div> <div>Limit2(Ave.) - - -</div> <div>VA(PEAK) ———</div> <div>VB(PEAK) ———</div> <div>VA(QP) ———</div> <div>VA(Ave.) ———</div> <div>VB(QP) ———</div> <div>VB(Ave.) ———</div>			
Frequency [MHz]	Meter Reading (Ave.) [dBuV]	Meter Reading (QP) [dBuV]	Factor [dB]	Level(Ave.) [dBuV]	Level(QP) [dBuV]	Line	Limit(Ave.) [dBuV]	Limit(QP) [dBuV]	Margin(Ave.) [dB]	Margin(QP) [dB]
0.1863	24.5	30	9.8	34.3	39.8	VA	66	79	31.7	39.2
22.8123	39.4	39.3	10.3	49.7	49.6	VA	60	73	10.3	23.4
0.5077	26.5	27.5	9.9	36.4	37.4	VB	60	73	23.6	35.6
RADIATED EMISSION										
Model Name : SFS302415			Temp. : 25degreeC							
Model No. :			Humi. : 45%							
Serial No. :			Date : 2007/10/5 17:32							
Points : 3			Test Equip. : R3132,ESPC							
Detector : PEAK/QP			Load Line : 100mm							
Polarization : Vertical			Comment : Vo = 15.0V , Io = 2.0A							
Power Supply : DC 24V										
Limit: [CISPR 11] Class A Group 1<3m>										
							<div>Limit(QP) ———</div> <div>Horizontal(PEAK) ———</div> <div>Vertical(PEAK) ———</div> <div>Vertical(QP) ———</div>			
Frequency [MHz]	MeterReading (QP) [dBuV]	Ant. Type	Antenna Factor [dB/m]	Cable & Preamp [dB]	Level(QP) [dBuV/m]	Angle [°]	Height [cm]	Polar.	Limit [dBuV/m]	Margin [dB]
31.001	51.9	BL	17.7	-32.3	37.3	107	100	Vert.	50	12.7
122.508	51.8	BL	11	-31.7	31.1	3	158	Vert.	50	18.9
234.773	46.9	BL	10.4	-31.2	26.1	203	129	Vert.	57	30.9

DATA SHEET		Date	05-Oct-07
Model	SFS302415	Temp.	25 degreeC
Test	EMI Line conduction & Radiated emission	Humid.	45 %RH
		Tested by	Y.Miyawaki

## 1.Conditions

### (1)Photograph of Test Set-Up

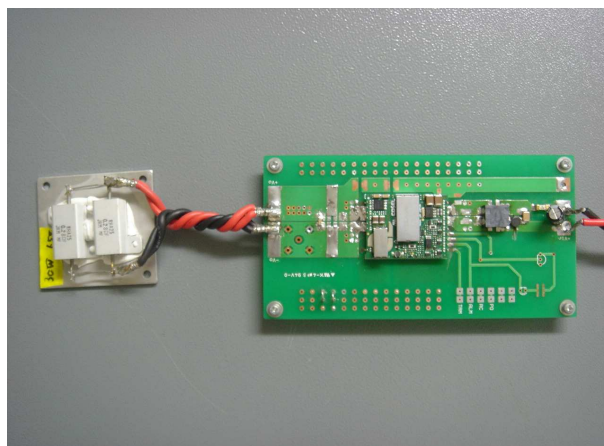
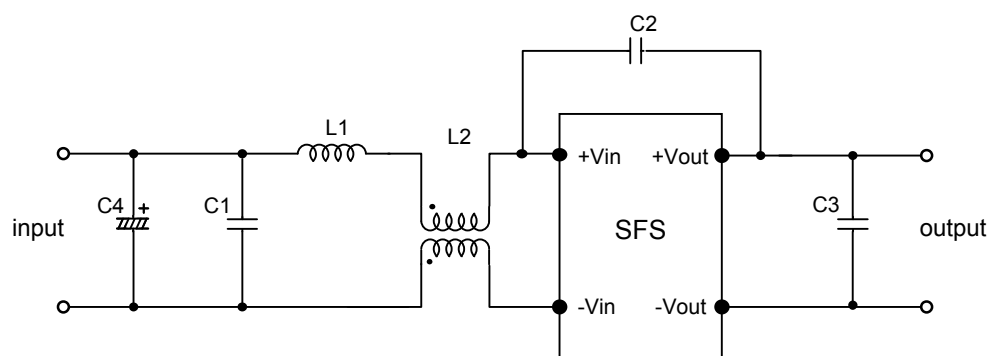


Fig1. Photograph of Test Set-Up

### (2)Testing circuitry



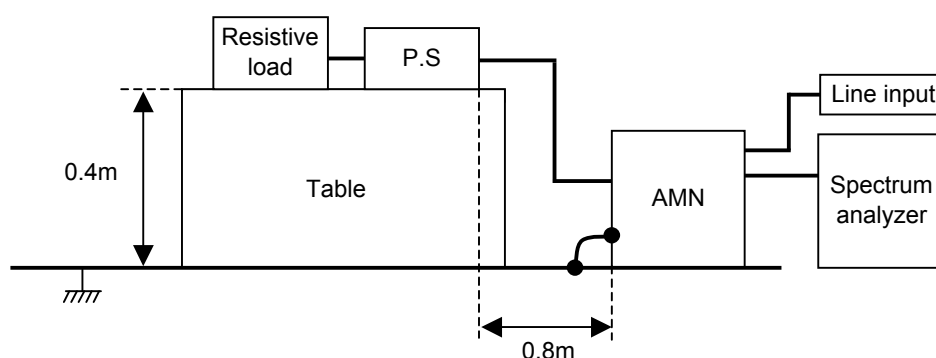
C1: 1 $\mu$ F 100V Ceramic capacitor  
 C2: 2200pF 630V Ceramic capacitor  
 C3: 0.1 $\mu$ F 50V Ceramic capacitor  
 C4: 68 $\mu$ F 80V Electric capacitor

L1: 1 $\mu$ H 2.4A Inductor  
 L2: ACM1211-102-2PL : TDK

Fig2. Testing circuitry

DATA SHEET		Date	05-Oct-07
Model	Circuit used for measurement	Temp.	25 degreeC
Test	EMI Line conduction & Radiated emission	Humid.	45 %RH
		Tested by	Y.Miyawaki

## 1. Line conduction



## 2. Radiated emission

