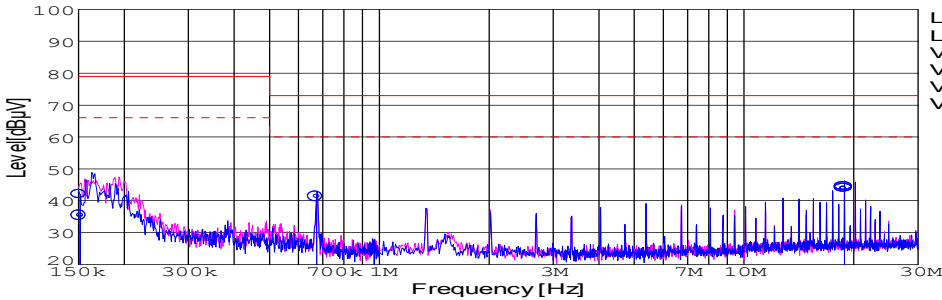
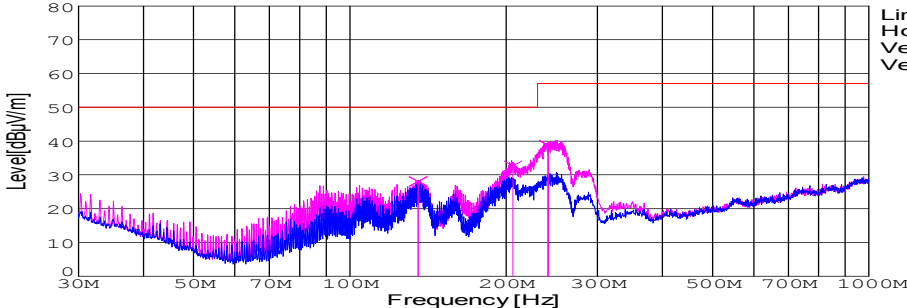


DATA SHEET							Date	11-Oct-07		
Model	SFS15481R5						Temp.	25 degreeC		
Test	EMI Line conduction & Radiated emission						Humid.	45 %RH		
							Tested by	Y.Miyawaki		
LINE CONDUCTION										
Model Name : SFS15481R5			Temp. : 25degreeC							
Model No. :			Humi. : 45%							
Serial No. :			Date : 2007/10/11 13:45							
Points : 3			Test Equip. : R3132,ESPC							
Detector : PEAK/QP/Ave.			Load Line : 100mm							
Line Mode : VA			Comment : Vo = 1.5V , Io = 5.2A							
Power Supply : DC 48V										
Limit1: [CISPR Pub11] Class A Gr.1(QP)										
Limit2: [CISPR Pub11] Class A Gr.1(Ave.)										
							Limit1(QP) Limit2(Ave.) VA(PEAK) VB(PEAK) VA(QP) VA(Ave.)			
Frequency [MHz]	Meter Reading (Ave.) [dBuV]	Meter Reading (QP) [dBuV]	Factor [dB]	Level(Ave.) [dBuV]	Level(QP) [dBuV]	Line	Limit(Ave.) [dBuV]	Limit(QP) [dBuV]	Margin(Ave.) [dB]	Margin(QP) [dB]
0.1513	25.6	32.1	9.8	35.4	41.9	VA	66	79	30.6	37.1
0.6731	31.4	31.4	9.9	41.3	41.3	VA	60	73	18.7	31.7
18.8377	33.7	34.2	10.3	44	44.5	VA	60	73	16	28.5
RADIATED EMISSION										
Model Name : SFS15481R5			Temp. : 25degreeC							
Model No. :			Humi. : 45%							
Serial No. :			Date : 2007/10/11 13:55							
Points : 3			Test Equip. : R3132,ESPC							
Detector : PEAK/QP			Load Line : 100mm							
Polarization : Vertical			Comment : Vo = 1.5V , Io = 5.2A							
Power Supply : DC 48V										
Limit: [CISPR 11] Class A Group 1<3m>										
							Limit(QP) Horizontal(PEAK) Vertical(PEAK) Vertical(QP)			
Frequency [MHz]	MeterReading (QP) [dBuV]	Ant. Type	Antenna Factor [dB/m]	Cable & Preamp [dB]	Level(QP) [dBuV/m]	Angle [°]	Height [cm]	Polar.	Limit [dBuV/m]	Margin [dB]
135.394	48.7	BL	11	-31.6	28.1	54	148	Vert.	50	21.9
206.143	55.4	BL	8.6	-31.3	32.7	227	115	Vert.	50	17.3
241.126	58.7	BL	11.2	-31.2	38.7	195	122	Vert.	57	18.3

DATA SHEET		Date	11-Oct-07
Model	SFS15481R5	Temp.	25 degreeC
Test	EMI Line conduction & Radiated emission	Humid.	45 %RH
		Tested by	Y.Miyawaki

1.Conditions

(1)Photograph of Test Set-Up

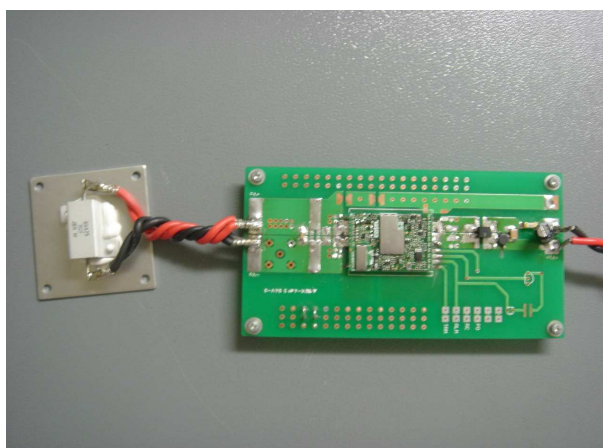
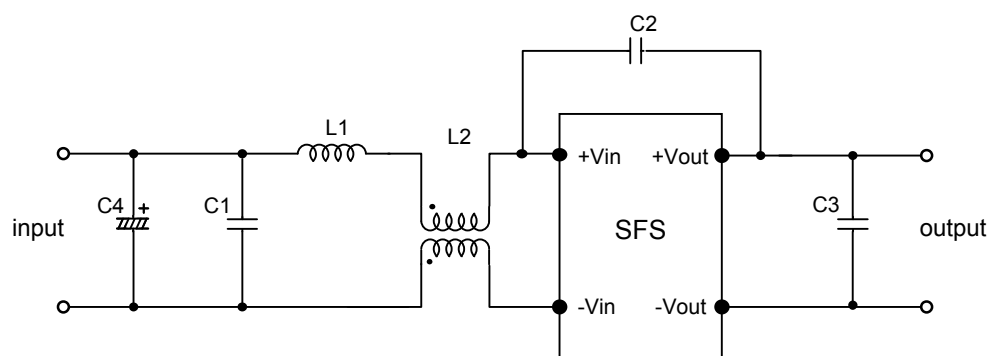


Fig1. Photograph of Test Set-Up

(2)Testing circuitry



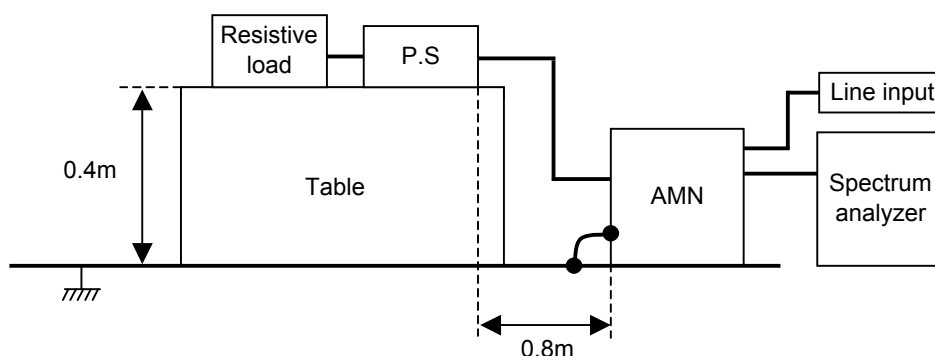
C1: 1 μ F 100V Ceramic capacitor
 C2: 2200pF 630V Ceramic capacitor
 C3: 22 μ F 16V Ceramic capacitor
 C4: 10 μ F 100V Electric capacitor

L1: 1 μ H 2.4A Inductor
 L2: ZJYS51R5-2PT : TDK

Fig2. Testing circuitry

DATA SHEET		Date	11-Oct-07
Model	Circuit used for measurement	Temp.	25 degreeC
Test	EMI Line conduction & Radiated emission	Humid.	45 %RH
		Tested by	Y.Miyawaki

1. Line conduction



2. Radiated emission

