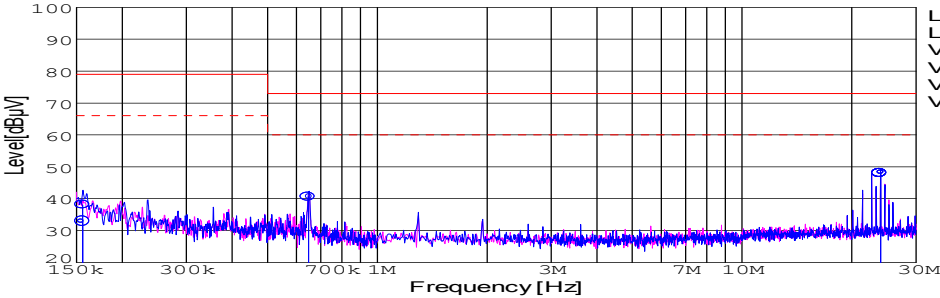
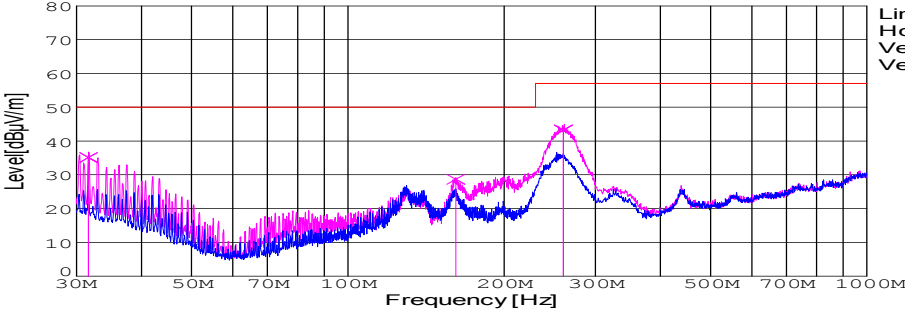


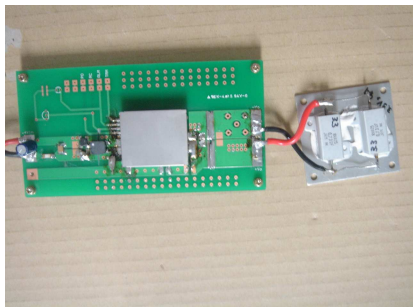
DATA SHEET							Date	08-Sep-06		
Model	SFCS154805						Temp.	25degreeC		
Test	EMI Line conduction & Radiated emission						Humid.	45 %RH		
							Tested by	S.Shiina		
LINE CONDUCTION										
Model Name		SFCS154805			Temp.		25degreeC			
Model No.					Humi.		45%			
Serial No.					Date		2006/9/8 12:58			
Points		3			Test Equip.		R3132,ESPC			
Detector		PEAK/QP/Ave.			Load Line		100mm			
Line Mode		VA			Comment					
Power Supply		DC 48V								
Limit1:		[CISPR Pub11] Class A Gr.1(QP)								
Limit2:		[CISPR Pub11] Class A Gr.1(Ave.)								
							Limit1(QP) Limit2(Ave.) VA(PEAK) VB(PEAK) VA(QP) VA(Ave.)		Testing circuitry 2	
Frequency [MHz]	Meter Reading (Ave.) [dBuV]	Meter Reading (QP) [dBuV]	Factor [dB]	Level(Ave.) [dBuV]	Level(QP) [dBuV]	Line	Limit(Ave.) [dBuV]	Limit(QP) [dBuV]	Margin(Ave.) [dB]	Margin(QP) [dB]
0.1558	23	28.3	9.8	32.8	38.1	VA	66	79	33.2	40.9
0.6485	30.7	30.8	9.9	40.6	40.7	VA	60	73	19.4	32.3
23.9604	37.8	37.6	10.3	48.1	47.9	VA	60	73	11.9	25.1
RADIATED EMISSION										
Model Name		SFCS154805			Temp.		25degreeC			
Model No.					Humi.		45%			
Serial No.					Date		2006/9/8 13:31			
Points		3			Test Equip.		R3132,ESPC			
Detector		PEAK/QP			Load Line		100mm			
Polarization		Vertical			Comment					
Power Supply		DC 48V								
Limit:		[CISPR 11] Class A Group 1<3m>								
							Limit(QP) Horizontal(PEAK) Vertical(PEAK) Vertical(QP)		Testing circuitry 2	
Frequency [MHz]	MeterReading (QP) [dBuV]	Ant. Type	Antenna Factor [dB/m]	Cable & Preamp [dB]	Level(QP) [dBuV/m]	Angle [°]	Height [cm]	Polar.	Limit [dBuV/m]	Margin [dB]
31.652	49.9	BL	17.4	-32.2	35.1	107	102	Vert.	50	14.9
161.424	50.4	BL	9.8	-31.5	28.7	123	158	Vert.	50	21.3
260.237	60.6	BL	13.7	-31.1	43.2	101	138	Vert.	57	13.8

DATA SHEET		Date	08-Sep-06
Model	SFCS154805	Temp.	25degreeC
Test	EMI Line conduction & Radiated emission	Humid.	45 %RH
		Tested by	S.Shiina

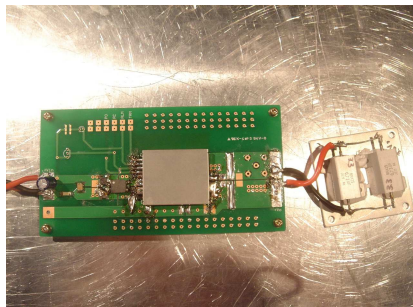
1.Conditions

(1)Photographs of Test Set-Up

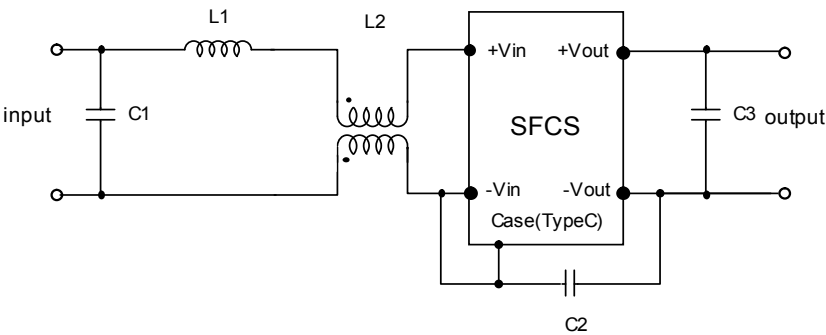
LINE CONDUCTION



Radiated emission



(2)Testing circuitry



- C1: 1 μ F 100V Ceramic capacitor
C2: 1000pF 630V Ceramic capacitor
C3 : 22 μ F 16V Ceramic capacitor
- L1 : 1 μ H 2.4A Inductor
L2 : ZJYS51R5-2P : TDK

Fig. Testing circuitry2

DATA SHEET							Date	08-Sep-06	
Model	SFCS154805						Temp.	25degreeC	
Test	EMI Line conduction & Radiated emission						Humid.	45 %RH	
							Tested by	S.Shiina	

LINE CONDUCTION

Model Name : SFCS154805 Temp. : 25degreeC

Model No. : Humi. : 45%

Serial No. : Date : 2006/9/8 11:50

Points : 3 Test Equip. : R3132,ESPC

Detector : PEAK/QP/Ave. Load Line : 100mm

Line Mode : VA/VB Comment :

Power Supply : DC 48V

Limit1: [CISPR Pub11] Class A Gr.1(QP)

Limit2: [CISPR Pub11] Class A Gr.1(Ave.)

Testing circuitry 1

Frequency [MHz]	Meter Reading (Ave.) [dBuV]	Meter Reading (QP) [dBuV]	Factor [dB]	Level(Ave.) [dBuV]	Level(QP) [dBuV]	Line	Limit(Ave.) [dBuV]	Limit(QP) [dBuV]	Margin(Ave.) [dB]	Margin(QP) [dB]
0.6467	35	34.6	9.9	44.9	44.5	VA	60	73	15.1	28.5
23.9422	37	37.1	10.3	47.3	47.4	VA	60	73	12.7	25.6
22.6504	34.1	33.4	10.3	44.4	43.7	VB	60	73	15.6	29.3

RADIATED EMISSION

Model Name : SFCS154805 Temp. : 25degreeC

Model No. : Humi. : 45%

Serial No. : Date : 2006/9/8 12:02

Points : 3 Test Equip. : R3132,ESPC

Detector : PEAK/QP Load Line : 100mm

Polarization : Vertical Comment :

Power Supply : DC 48V

Limit: [CISPR 11] Class A Group 1<3m>

Testing circuitry 1

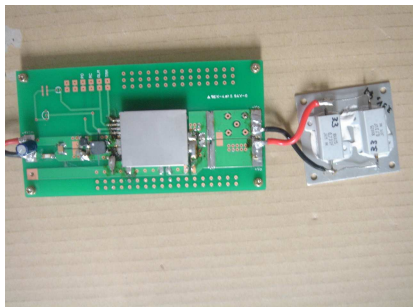
Frequency [MHz]	MeterReading (QP) [dBuV]	Ant. Type	Antenna Factor [dB/m]	Cable & Preamp [dB]	Level(QP) [dBuV/m]	Angle [°]	Height [cm]	Polar.	Limit [dBuV/m]	Margin [dB]
31.66	50.5	BL	17.4	-32.2	35.7	60	100	Vert.	50	14.3
220.292	50.8	BL	8.9	-31.2	28.5	295	125	Vert.	50	21.5
259.073	60.3	BL	13.6	-31.1	42.8	110	141	Vert.	57	14.2

DATA SHEET		Date	08-Sep-06
Model	SFCS154805	Temp.	25degreeC
Test	EMI Line conduction & Radiated emission	Humid.	45 %RH
		Tested by	S.Shiina

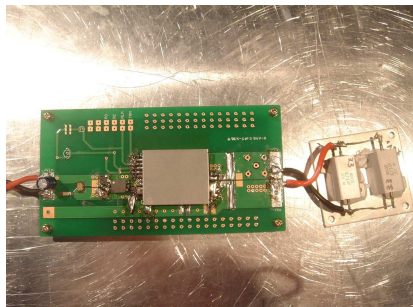
1.Conditions

(1)Photographs of Test Set-Up

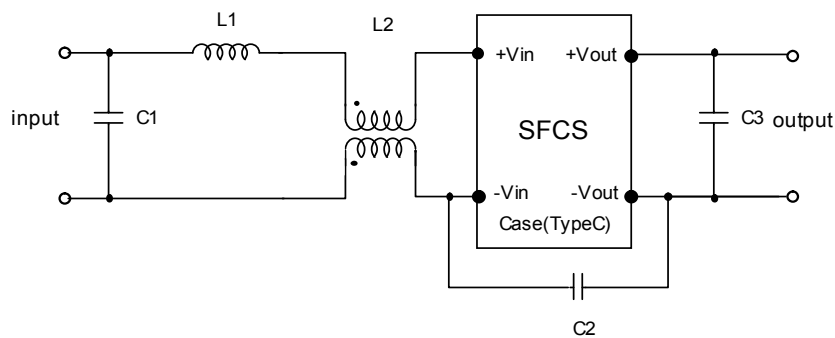
LINE CONDUCTION



Radiated emission



(2)Testing circuitry



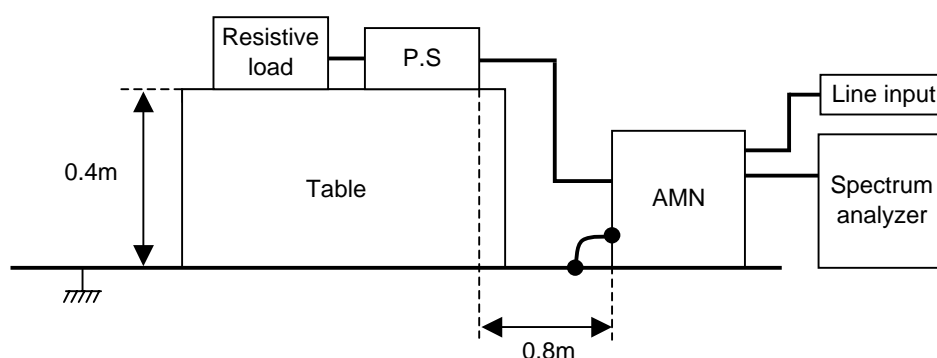
C1 : 1 μ F 100V Ceramic capacitor
C2 : 1000pF 630V Ceramic capacitor
C3 : 22 μ F 16V Ceramic capacitor

L1 : 1 μ H 2.4A Inductor
L2 : ZJYS51R5-2P : TDK

Fig. Testing circuitry1

DATA SHEET		Date	08-Sep-06
Model	Circuit used for measurement	Temp.	25 degreeC
Test	EMI Line conduction & Radiated emission	Humid.	45 %RH
		Tested by	S.Shiina

1. Line conduction



2. Radiated emission

