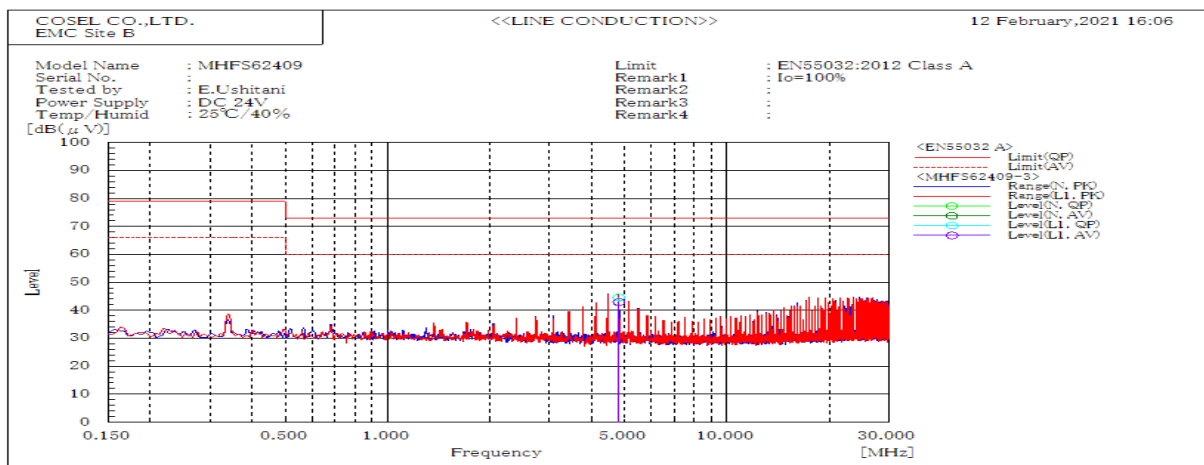
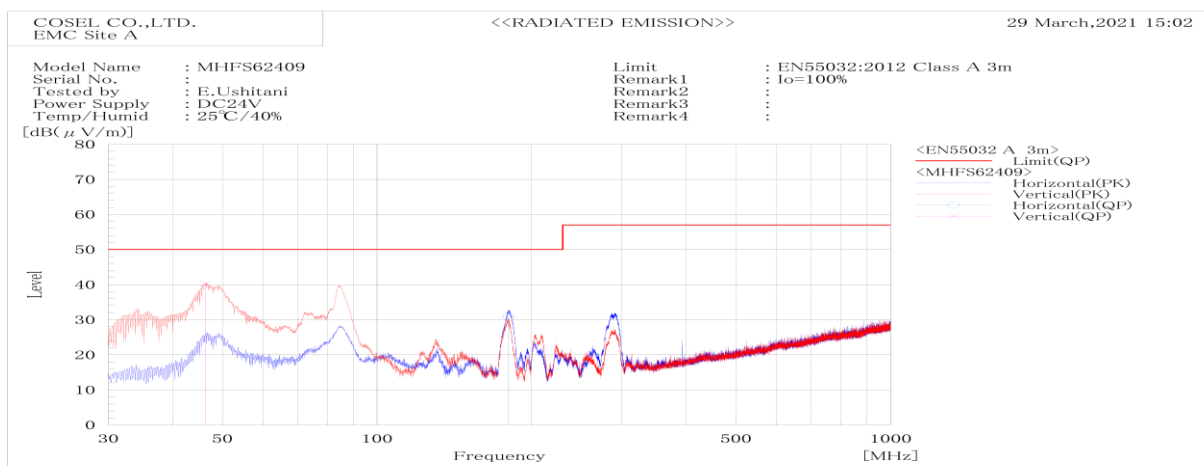


DATA SHEET		Date	05-Nov-21
Model	MHFS62409	Temp.	25 degreeC
Test	EMI Line conduction & Radiated emission	Humid.	40 %RH
		Tested by	E.Ushitani



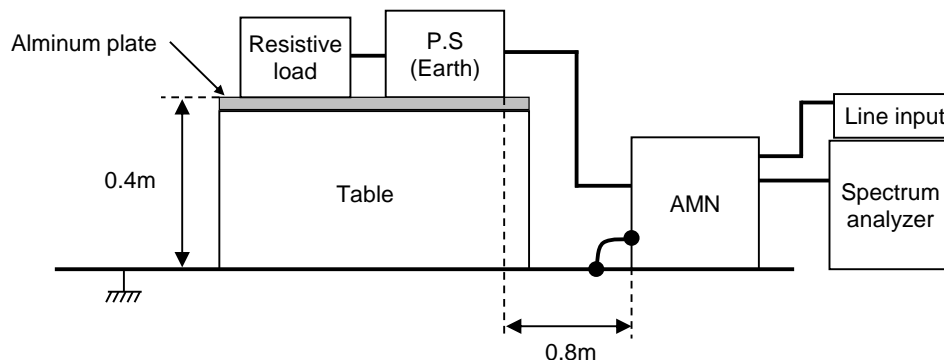
Frequency	Line	Level		Limit		Margin		Pass/Fail	Remark
MHz		dB(μV)		dB(μV)		dB			
		QP	AV	QP	AV	QP	AV		
4.799	L1	44.6	42.9	73	60	28.4	17.1	Pass	
4.798	N	44.6	43	73	60	28.4	17	Pass	



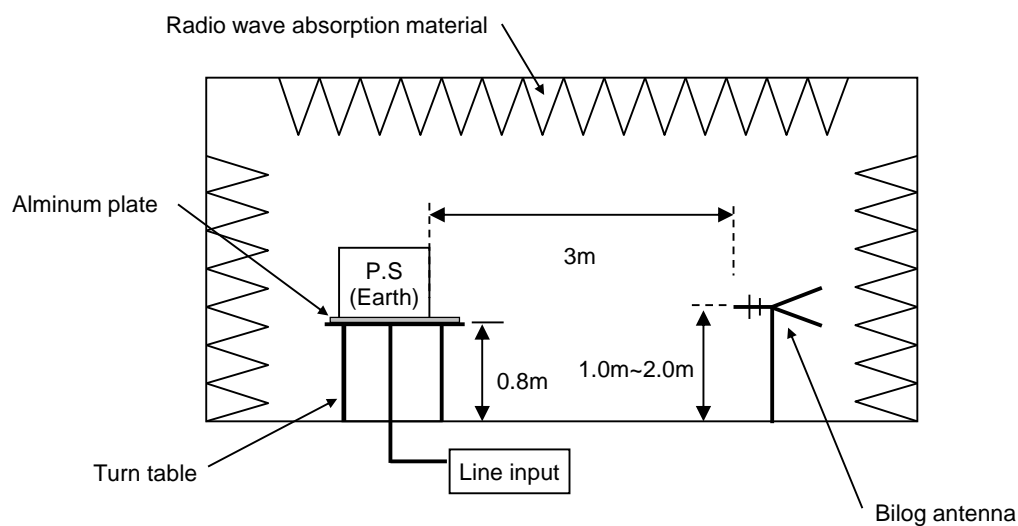
Frequency	Polarization	Stability	Level	Limit	Margin	Pass/Fail	Height	Angle	Remark
MHz			dB(μV/m)	dB(μV/m)	dB				
			QP	QP	QP		cm	deg	
180.496	H	Stable	30.9	50	19.1	Pass	156.8	0	
46.407	V	Stable	40.2	50	9.8	Pass	101.6	357.7	

DATA SHEET		Date	05-Nov-21
Model	Circuit used for measurement	Temp.	25 degreeC
Test	EMI Line conduction & Radiated emission	Humid.	40 %RH
		Tested by	E.Ushitani

1. Line conduction



2. Radiated emission

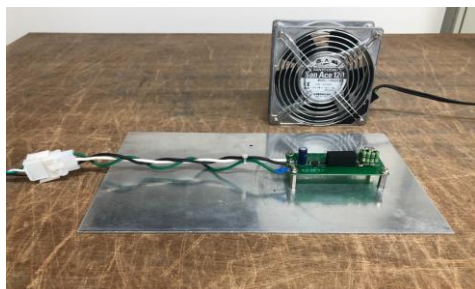


Conditions

Test : EMI
Model Name: MHFS6□□

○Photographs of Test Set-Up

LINE CONDUCTION



RADIATED EMISSION



○Testing circuitry

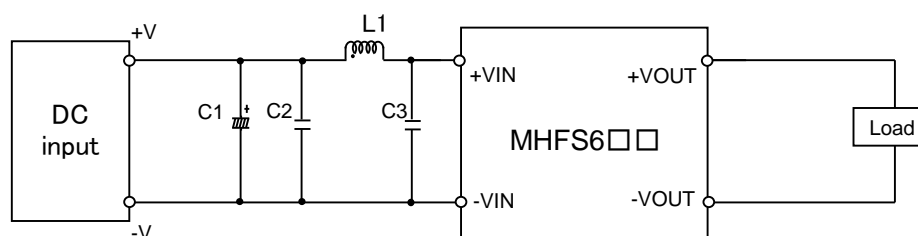


Fig.1 Testing circuitry

C1 :	MHFS612□□	50V 100 μ F Electric capacitor (LXZseries NIPPON CHEMI-CON)
	MHFS624□□	-
	MHFS648□□	-
C2 :	MHFS612□□	25V 10 μ F Ceramic capacitor (GRM31CR71E106K MURATA MANUFACTURING)
	MHFS624□□	50V 4.7 μ F Ceramic capacitor (GRM31CR71H475K MURATA MANUFACTURING)
	MHFS648□□	100V 2.2 μ F Ceramic capacitor (HMK316AC7225KLHTE TAIYO YUDEN)
C3 :	MHFS612□□	25V 10 μ F Ceramic capacitor (GRM31CR71E106K MURATA MANUFACTURING)
	MHFS624□□	50V 4.7 μ F Ceramic capacitor (GRM31CR71H475K MURATA MANUFACTURING)
	MHFS648□□	100V 2.2 μ F Ceramic capacitor (HMK316AC7225KLHTE TAIYO YUDEN)
L1 :	MHFS612□□	2600mA 2.2 μ H Inductor (LQH5BPN2R2NT0 MURATA MANUFACTURING)
	MHFS624□□	1600mA 10 μ H Inductor (LQH5BPN100MT0 MURATA MANUFACTURING)
	MHFS648□□	1050mA 22 μ H Inductor (LQH5BPN220MT0 MURATA MANUFACTURING)