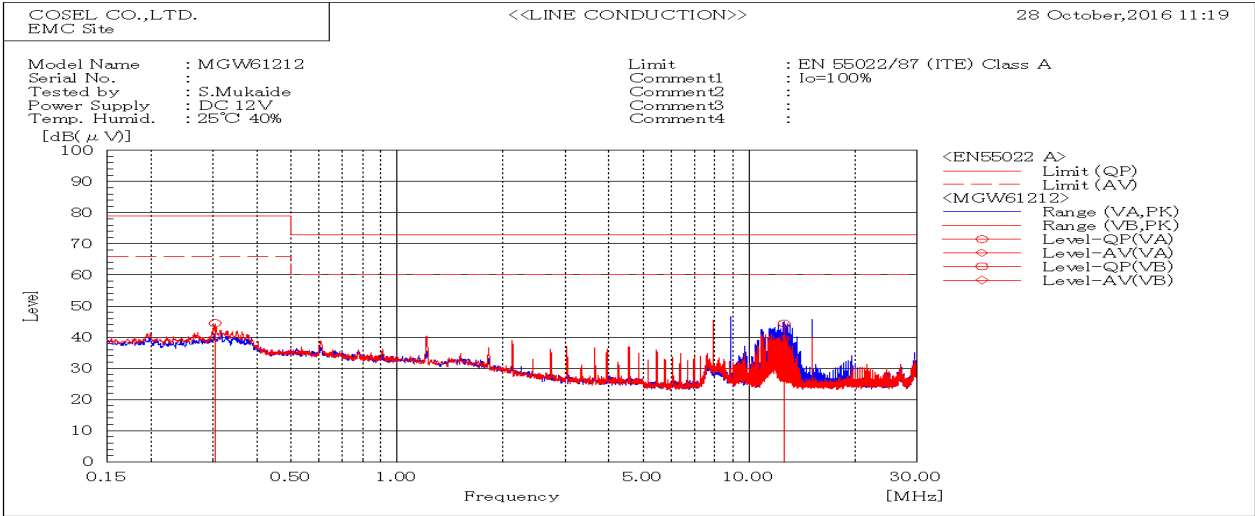
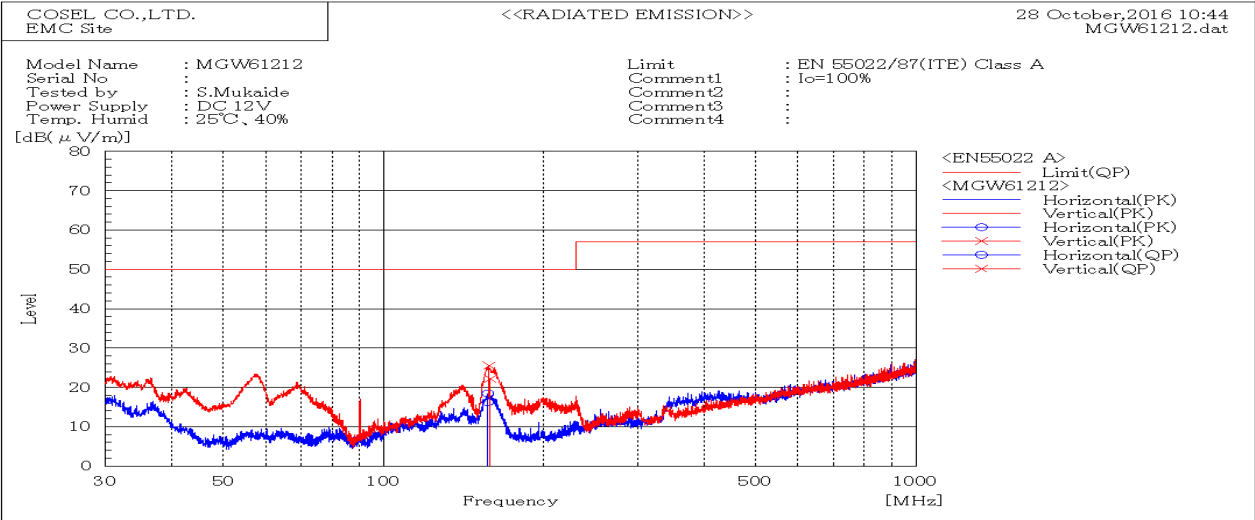


DATA SHEET		Date	28-Oct-16
Model	MGW61212	Temp.	25 degreeC
Test	EMI	Humid.	40 %RH
	Line conduction & Radiated emission	Tested by	S.Mukaide



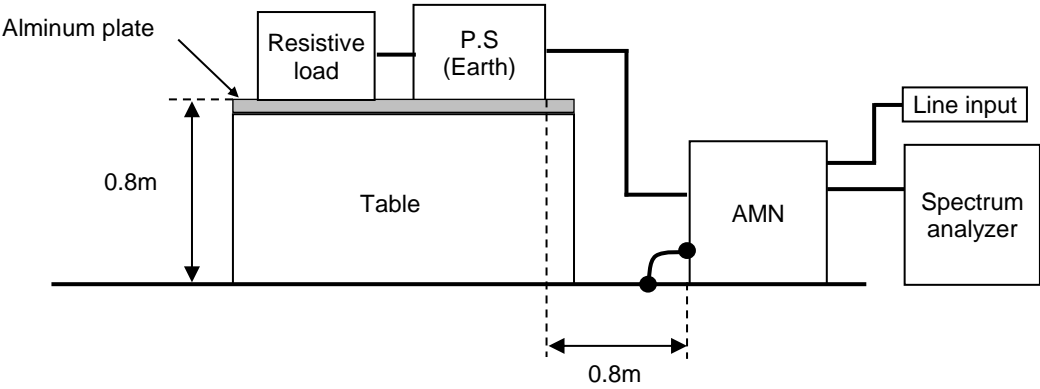
Frequency MHz	Line Phase	Level dB(μV)		Limit dB(μV)		Margin dB		Pass/Fail	Remark
		QP	AV	QP	AV	QP	AV		
0.30413	VB	44.5	40.1	79	66	34.5	25.9	Pass	
12.59955	VA	44.4	39.5	73	60	28.6	20.5	Pass	



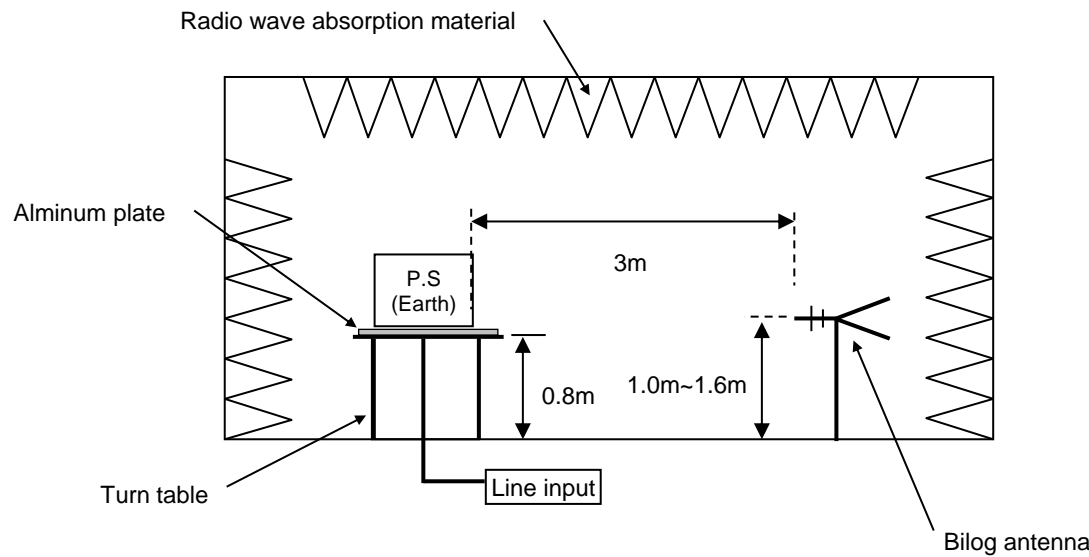
Frequency MHz	Polarization	Stability	Reading dB(μV)	Limit dB(μV/m)	Margin dB(μV/m)	Pass/Fail	Height cm	Angle deg	Remark
			QP	QP	QP				
156.686	H	Stable	16.2	50.0	33.8	Pass	157	26	
158.608	V	Stable	22.2	50.0	27.8	Pass	103	60	

DATA SHEET		Date	28-Oct-16
Model	Circuit used for measurement	Temp.	25 degreeC
Test	EMI Line conduction & Radiated emission	Humid.	40 %RH
		Tested by	S.Mukaide

1. Line conduction



2. Radiated emission

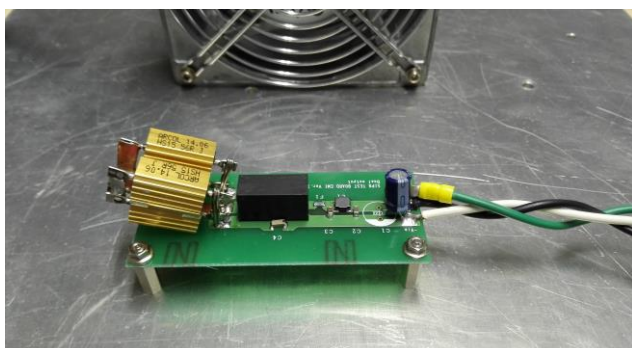


Conditions

Test : EMI
Model Name : MGW6□□

○Photographs of Test Set-Up

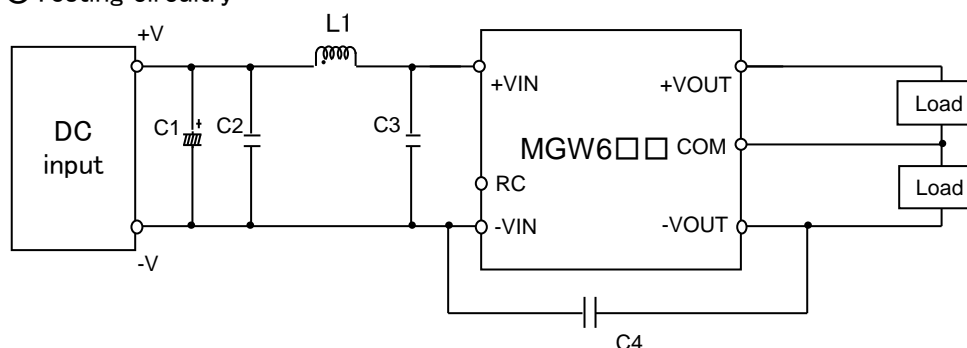
LINE CONDUCTION



RADIATED EMISSION



○Testing circuitry



- | | | | |
|------|----------|--------------------|---|
| C1 : | MGW605□□ | 25V 220 μ F | Electric capacitor (LXZseries NIPPON CHEMI-CON) |
| | MGW612□□ | 50V 100 μ F | Electric capacitor (LXZseries NIPPON CHEMI-CON) |
| | MGW624□□ | - | |
| | MGW648□□ | - | |
| C2 : | MGW605□□ | 16V 22 μ F | Ceramic capacitor (GRM31CC71C226K MURATA MANUFACTURING) |
| | MGW612□□ | 25V 10 μ F | Ceramic capacitor (GRM31CR71E106K MURATA MANUFACTURING) |
| | MGW624□□ | 50V 4.7 μ F | Ceramic capacitor (GRM31CR71H475K MURATA MANUFACTURING) |
| | MGW648□□ | 100V 2.2 μ F | Ceramic capacitor (GRM31CC72A225K MURATA MANUFACTURING) |
| C3 : | MGW605□□ | - | |
| | MGW612□□ | 25V 10 μ F | Ceramic capacitor (GRM31CR71E106K MURATA MANUFACTURING) |
| | MGW624□□ | 50V 4.7 μ F | Ceramic capacitor (GRM31CR71H475K MURATA MANUFACTURING) |
| | MGW648□□ | 100V 2.2 μ F | Ceramic capacitor (GRM31CC72A225K MURATA MANUFACTURING) |
| C4 : | MGW605□□ | 2kV 470pF | Ceramic capacitor (GR442QR73D471K MURATA MANUFACTURING) |
| | MGW612□□ | 2kV 470pF | Ceramic capacitor (GR442QR73D471K MURATA MANUFACTURING) |
| | MGW624□□ | 2kV 470pF | Ceramic capacitor (GR442QR73D471K MURATA MANUFACTURING) |
| | MGW648□□ | 2kV 1000pF | Ceramic capacitor (GR442QR73D102K MURATA MANUFACTURING) |
| L1 : | MGW605□□ | 3000mA 1.5 μ H | Inductor(LQH5BPN1R5NT0 MURATA MANUFACTURING) |
| | MGW612□□ | 2600mA 2.2 μ H | Inductor(LQH5BPN2R2NT0 MURATA MANUFACTURING) |
| | MGW624□□ | 1600mA 10 μ H | Inductor(LQH5BPN100MT0 MURATA MANUFACTURING) |
| | MGW648□□ | 1050mA 22 μ H | Inductor(LQH5BPN220MT0 MURATA MANUFACTURING) |