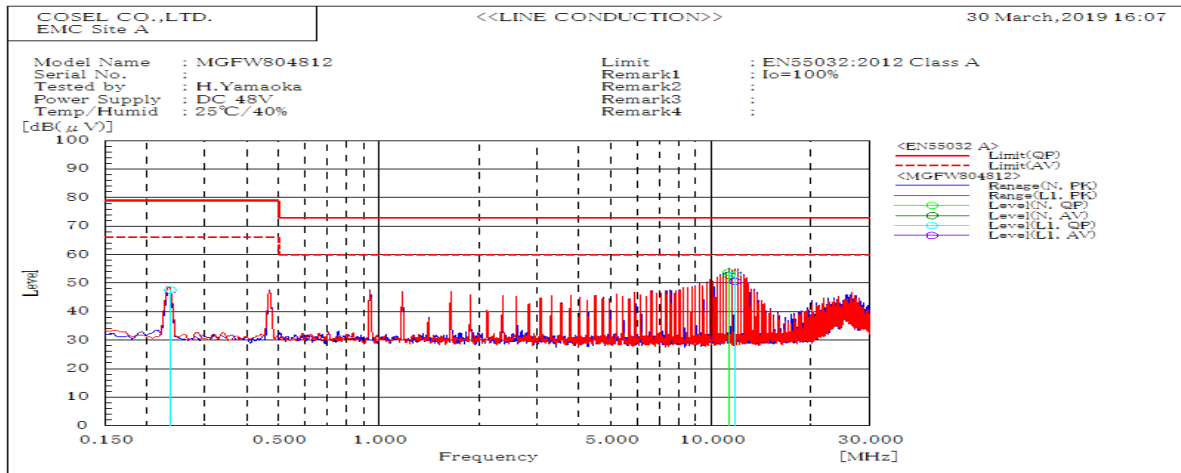
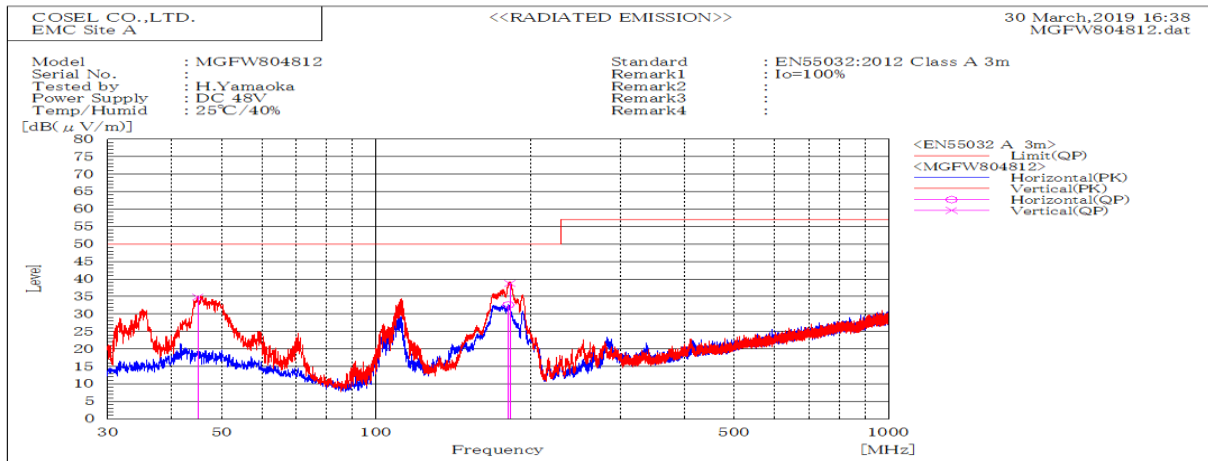


DATA SHEET		Date	23-Apr-19
Model	MGFW804812	Temp.	25 degreeC
Test	EMI Line conduction & Radiated emission	Humid.	40 %RH
		Tested by	H.Yamaoka



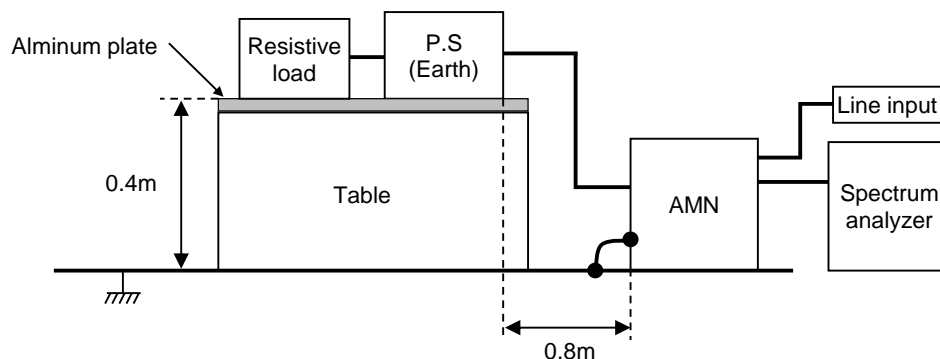
Frequency	Line	Level		Limit		Margin		Pass/Fail	Remark
MHz		dB(μV)		dB(μV)		dB			
		QP	AV	QP	AV	QP	AV		
0.236	L1	47.7	47.6	79	66	31.3	18.4	Pass	
11.784	L1	53.1	50.6	73	60	19.9	9.4	Pass	
11.305	N	53.8	52.8	73	60	19.2	7.2	Pass	



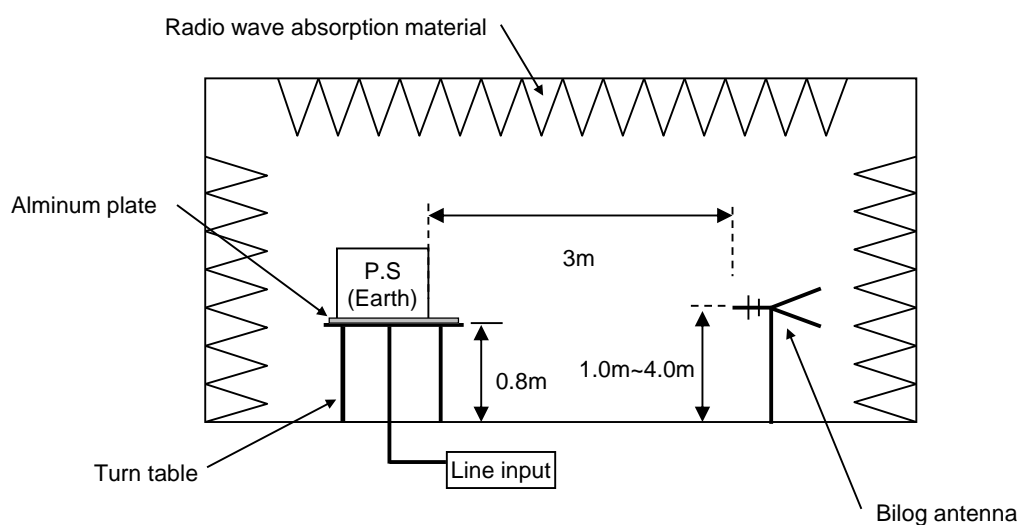
Frequency	Polarization	Stability	Level	Limit	Margin	Pass/Fail	Height	Angle	Remark
MHz			dB(μV/m)	dB(μV/m)	dB				
			QP	QP	QP				
182.678	V	Stable	38.7	50	11.3	Pass	100	54.7	
45.018	V	Stable	34.8	50	15.2	Pass	100.2	118.1	
181.352	H	Stable	32.6	50	17.4	Pass	127.2	24.2	

DATA SHEET		Date	23-Apr-19
Model	Circuit used for measurement	Temp.	25 degreeC
Test	EMI Line conduction & Radiated emission	Humid.	40 %RH
		Tested by	H.Yamaoka

1. Line conduction



2. Radiated emission



Conditions

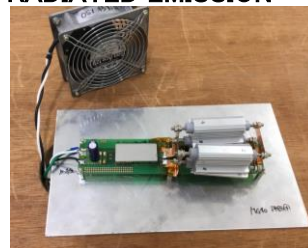
Test : EMI

Model Name : MGFS80□□

○Photographs of Test Set-Up LINE CONDUCTION



RADIATED EMISSION



○Testing circuitry

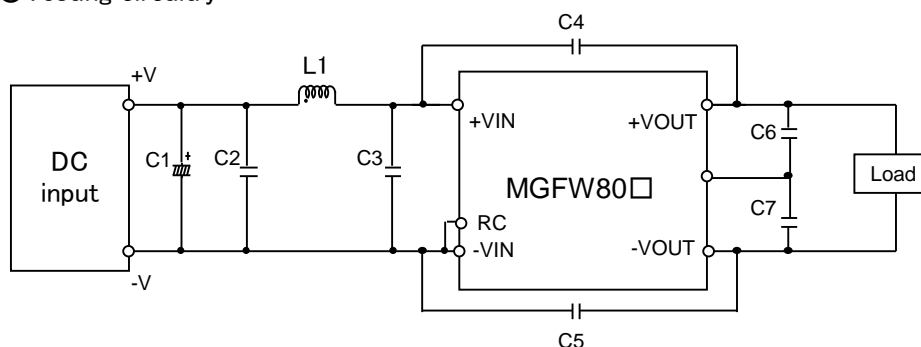


Fig.1 Testing circuitry

- C1 : MGFS8024□□ 63V 470 μ F Electrolytic capacitor (ELXZseries NIPPON CHEMI-CON)
MGFS8048□□ 100V 220 μ F Electrolytic capacitor (KYseries NIPPON CHEMI-CON)
- C2 : MGFS8024□□ 50V 10 μ F Ceramic capacitor (GRM32ER71H106K MURATA MANUFACTURING)
MGFS8048□□ 100V 4.7 μ F Ceramic capacitor (HMK325C7475K TAIYOU YUDEN)
- C3 : MGFS8024□□ 50V 10 μ F Ceramic capacitor (GRM32ER71H106K MURATA MANUFACTURING)
MGFS8048□□ 100V 4.7 μ F Ceramic capacitor (HMK325C7475K TAIYOU YUDEN)
- C4,C5 : MGFS8024□□ 2kV 2200pF Ceramic capacitor
(GR443QR73D222KW01 MURATA MANUFACTURING)
MGFS8048□□ 2kV 2200pF Ceramic capacitor
(GR443QR73D222KW01 MURATA MANUFACTURING)
- C6 : MGFS8024□□ 25V 22 μ F Ceramic capacitor (GRM32ER71E226K MURATA MANUFACTURING)
MGFS8048□□ 25V 22 μ F Ceramic capacitor (GRM32ER71E226K MURATA MANUFACTURING)
- C7 : MGFS8024□□ 25V 22 μ F Ceramic capacitor (GRM32ER71E226K MURATA MANUFACTURING)
MGFS8048□□ 25V 22 μ F Ceramic capacitor (GRM32ER71E226K MURATA MANUFACTURING)
- L1 : MGFS8024□□ 15.0A 1.0 μ H Inductor (SRP7050TA-1R0M BOURNS)
MGFS8048□□ 8.0A 3.3 μ H Inductor (SRP7050TA-3R3M BOURNS)