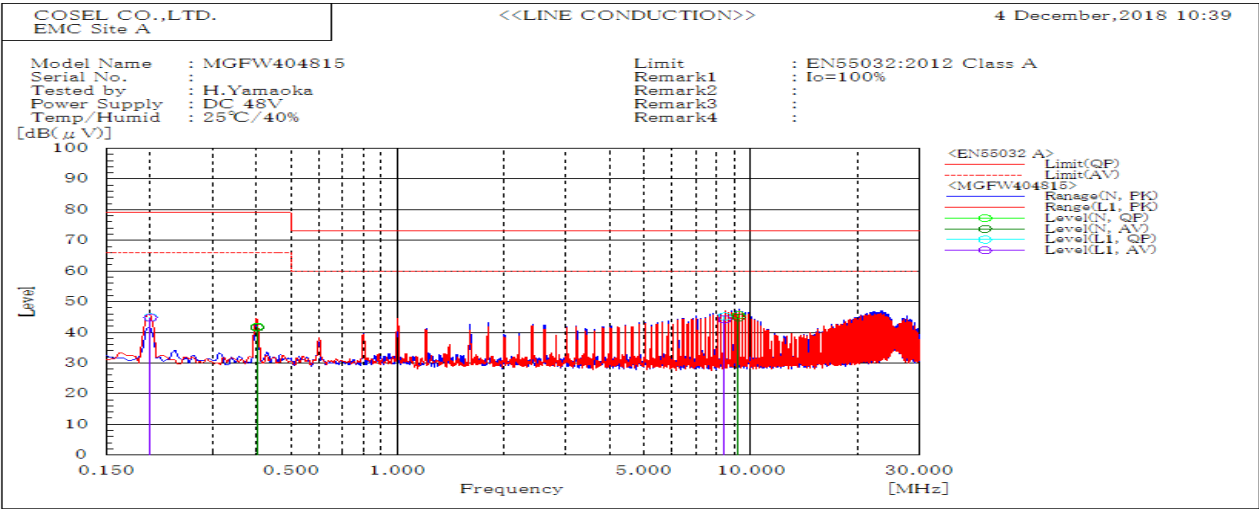
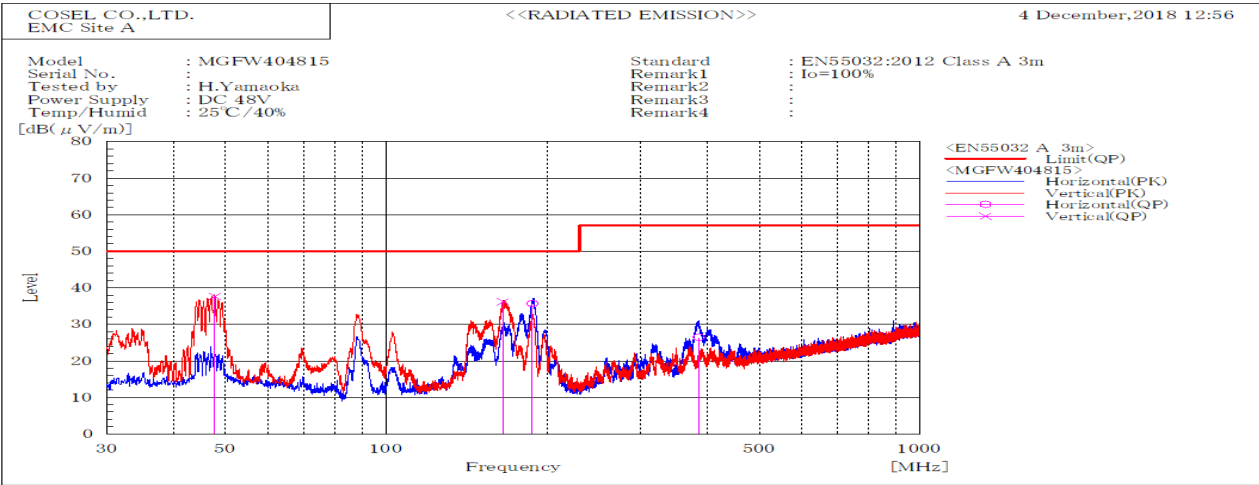


DATA SHEET		Date	15-Jan-19
Model	MGFW404815	Temp.	25 degreeC
Test	EMI Line conduction & Radiated emission	Humid.	40 %RH
		Tested by	H.Yamaoka



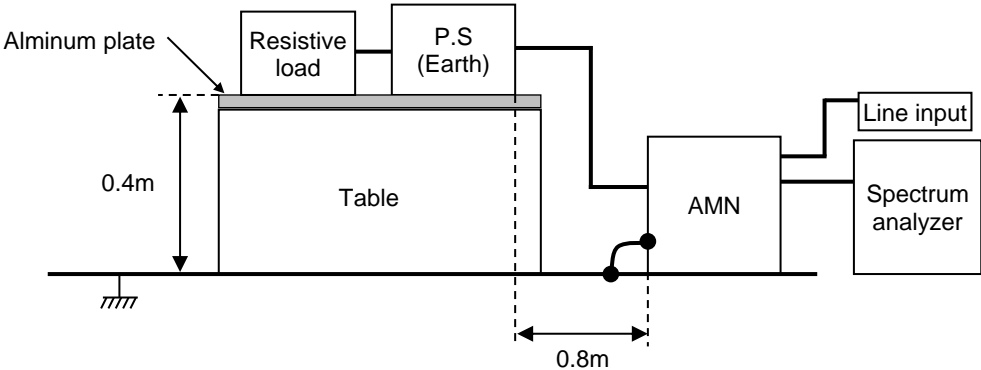
Frequency MHz	Line	Level dB(μV)	Limit dB(μV)	Margin dB	Pass/Fail	Remark
		QP	AV	QP	AV	
8.436	L1	45.2	44.2	73	60	27.8 15.8 Pass
0.2	L1	44.9	44.8	79	66	34.1 21.2 Pass
9.232	N	45.6	44.9	73	60	27.4 15.1 Pass
0.401	N	41.8	41.5	79	66	37.2 24.5 Pass



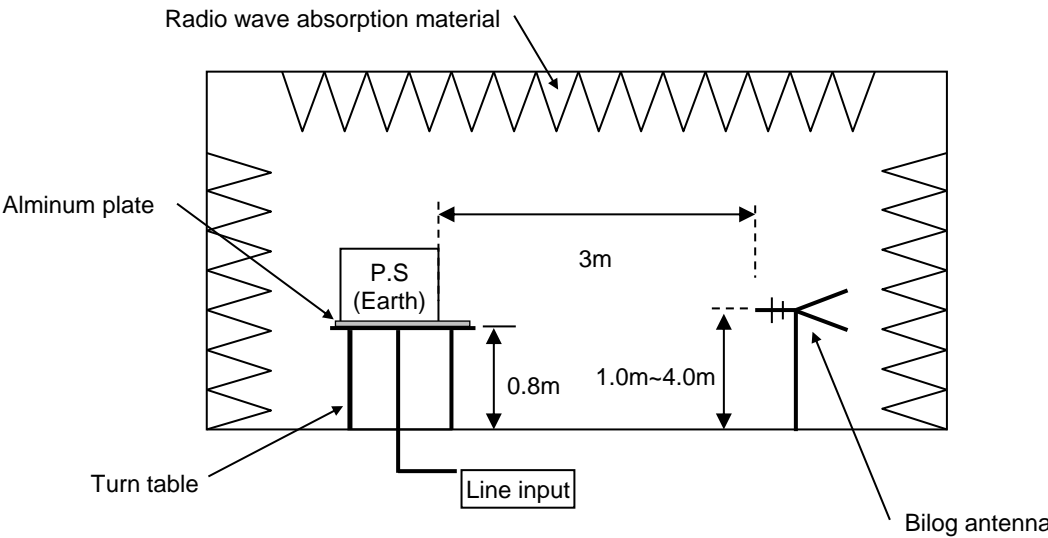
Frequency MHz	Polarization	Stability	Level dB(μV/m)	Limit dB(μV/m)	Margin dB	Pass/Fail	Height cm	Angle deg	Remark
			QP	QP	QP				
47.76	V	Stable	37.6	50	12.4	Pass	101.5	276.8	
165.545	V	Stable	36.2	50	13.8	Pass	100	210.9	
187.954	H	Stable	35.7	50	14.3	Pass	188	201.1	
385.153	H	Stable	26.5	57	30.5	Pass	100	342.8	

DATA SHEET		Date	15-Jan-19
Model	Circuit used for measurement	Temp.	25 degreeC
Test	EMI Line conduction & Radiated emission	Humid.	40 %RH
		Tested by	H.Yamaoka

1. Line conduction



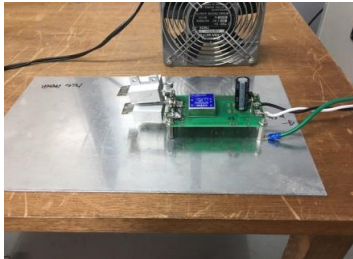
2. Radiated emission



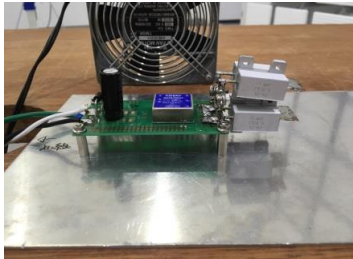
Conditions

Test : EMI
Model Name : MGFW40□□

○Photographs of Test Set-Up
LINE CONDUCTION



RADIATED EMISSION



○Testing circuitry

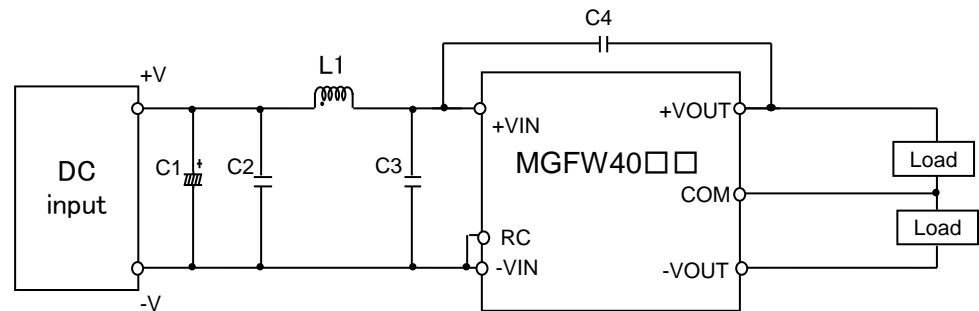


Fig.1 Testing circuitry

C1 :	MGFW4005□□	10V 4700μ F Electrolytic capacitor (UHWseries NICHICON CORPORATION)
	MGFW4024□□	63V 220μ F Electrolytic capacitor (KYseries NIPPON CHEMI-CON)
	MGFW4048□□	100V 220μ F Electrolytic capacitor (KYseries NIPPON CHEMI-CON)
C2 :	MGFW4005□□	16V 22μ F Ceramic capacitor (GRM32ER71C226K MURATA MANUFACTURING)
	MGFW4024□□	50V 10μ F Ceramic capacitor (GRM32ER71H106K MURATA MANUFACTURING)
	MGFW4048□□	100V 4.7μ F Ceramic capacitor (HMK325AC7475K TAIYOU YUDEN)
C3 :	MGFW4005□□	16V 22μ F Ceramic capacitor (GRM32ER71C226K MURATA MANUFACTURING)
	MGFW4024□□	50V 10μ F Ceramic capacitor (GRM32ER71H106K MURATA MANUFACTURING)
	MGFW4048□□	100V 4.7μ F Ceramic capacitor (HMK325AC7475K TAIYOU YUDEN)
C4 :	MGFW4005□□	2kV 1000pF Ceramic capacitor (GR431BR7LA102K MURATA MANUFACTURING)
	MGFW4024□□	2kV 1000pF Ceramic capacitor (GR431BR7LA102K MURATA MANUFACTURING)
	MGFW4048□□	2kV 1000pF Ceramic capacitor (GR431BR7LA102K MURATA MANUFACTURING)
L1 :	MGFW4005□□	15.0A 1.0μ H Inductor (SRP7050TA-1R0M BOURNS)
	MGFW4024□□	12.0A 1.8μ H Inductor (SRP7050TA-1R8M BOURNS)
	MGFW4048□□	6.0A 5.6μ H Inductor (SRP7050TA-5R6M BOURNS)