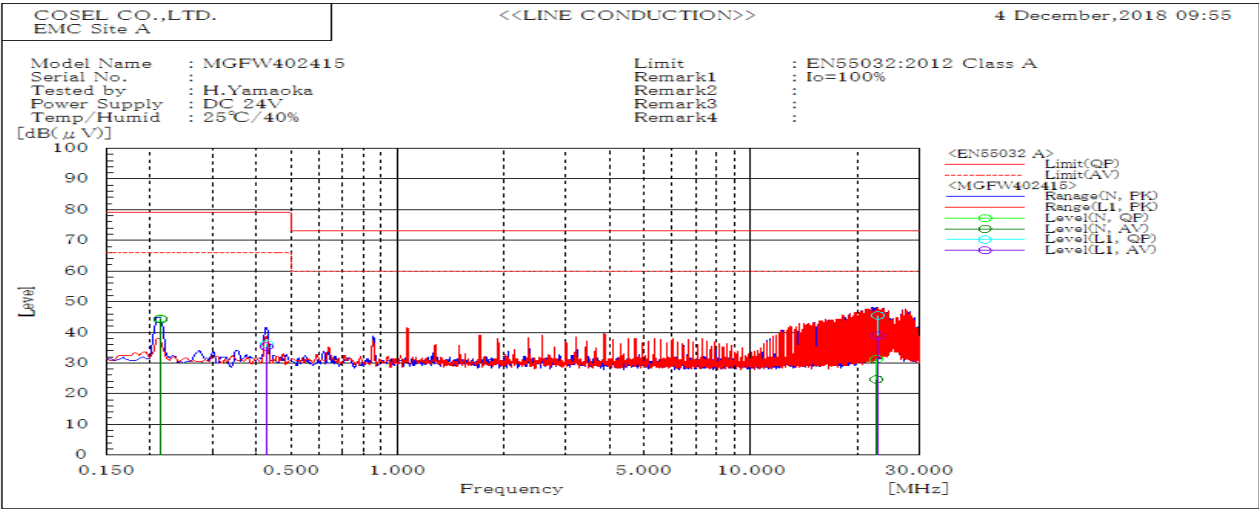
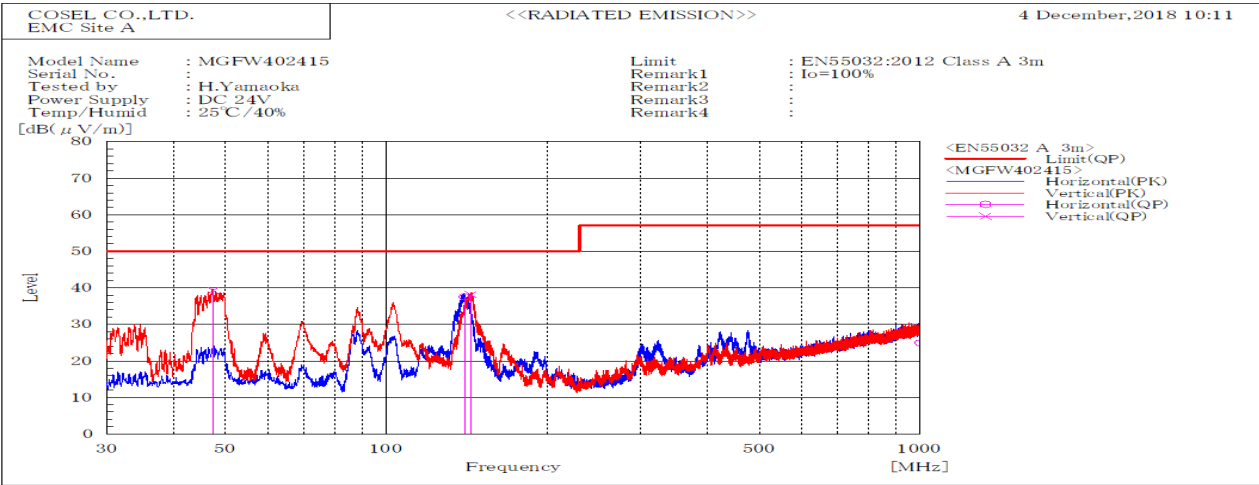


DATA SHEET		Date	15-Jan-19
Model	MGFW402415	Temp.	25 degreeC
Test	EMI Line conduction & Radiated emission	Humid.	40 %RH
		Tested by	H.Yamaoka



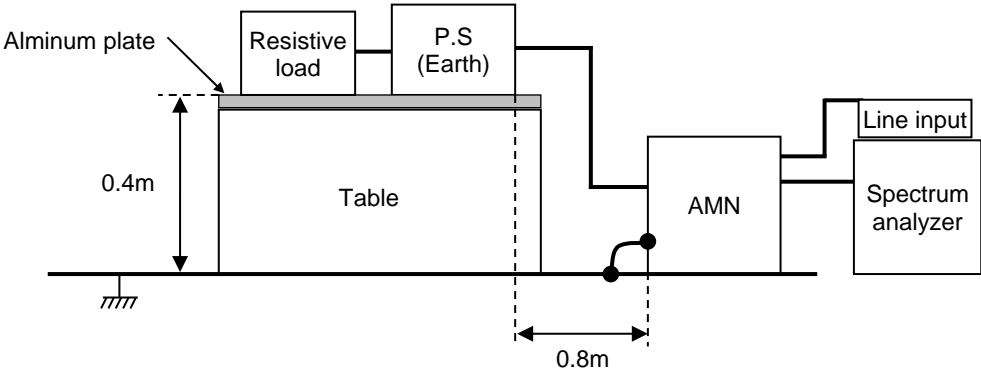
Frequency MHz	Line	Level dB(μV)	Limit dB(μV)	Margin dB	Pass/Fail	Remark
		QP	AV	QP	AV	
22.898	L1	45.5	38.9	73	60	27.5 21.1 Pass
0.427	L1	36.2	35.4	79	66	42.8 30.6 Pass
22.696	N	31.3	24.6	73	60	41.7 35.4 Pass
0.214	N	44.5	44.3	79	66	34.5 21.7 Pass



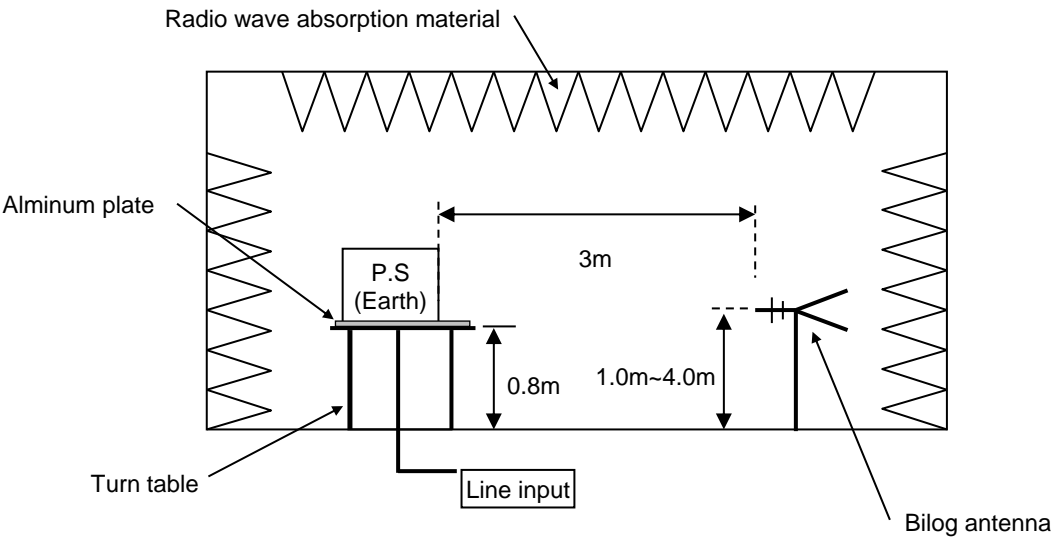
Frequency MHz	Polarization	Stability	Level dB(μV/m)	Limit dB(μV/m)	Margin dB	Pass/Fail	Height cm	Angle deg	Remark
			QP	QP	QP				
47.381	V	Stable	39.2	50	10.8	Pass	100.2	210.9	
144.031	V	Stable	38.2	50	11.8	Pass	101.7	153.2	
140.176	H	Stable	37.5	50	12.5	Pass	215.1	158.8	
999.464	H	Stable	24.9	57	32.1	Pass	118.9	357.6	

DATA SHEET		Date	15-Jan-19
Model	Circuit used for measurement	Temp.	25 degreeC
Test	EMI Line conduction & Radiated emission	Humid.	40 %RH
		Tested by	H.Yamaoka

1. Line conduction



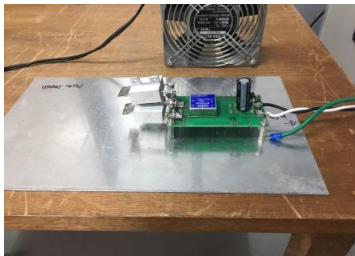
2. Radiated emission



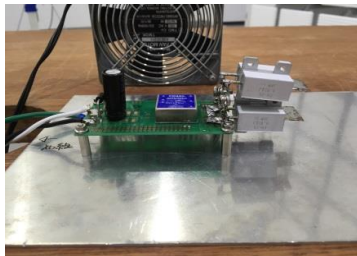
Conditions

Test : EMI
Model Name : MGFW40□□

○Photographs of Test Set-Up
LINE CONDUCTION



RADIATED EMISSION



○Testing circuitry

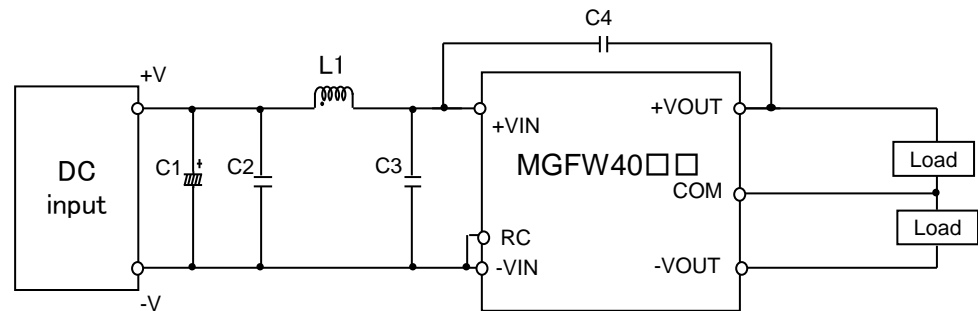


Fig.1 Testing circuitry

C1 :	MGFW4005□□	10V 4700μ F Electrolytic capacitor (UHWseries NICHICON CORPORATION)
	MGFW4024□□	63V 220μ F Electrolytic capacitor (KYseries NIPPON CHEMI-CON)
	MGFW4048□□	100V 220μ F Electrolytic capacitor (KYseries NIPPON CHEMI-CON)
C2 :	MGFW4005□□	16V 22μ F Ceramic capacitor (GRM32ER71C226K MURATA MANUFACTURING)
	MGFW4024□□	50V 10μ F Ceramic capacitor (GRM32ER71H106K MURATA MANUFACTURING)
	MGFW4048□□	100V 4.7μ F Ceramic capacitor (HMK325AC7475K TAIYOU YUDEN)
C3 :	MGFW4005□□	16V 22μ F Ceramic capacitor (GRM32ER71C226K MURATA MANUFACTURING)
	MGFW4024□□	50V 10μ F Ceramic capacitor (GRM32ER71H106K MURATA MANUFACTURING)
	MGFW4048□□	100V 4.7μ F Ceramic capacitor (HMK325AC7475K TAIYOU YUDEN)
C4 :	MGFW4005□□	2kV 1000pF Ceramic capacitor (GR431BR7LA102K MURATA MANUFACTURING)
	MGFW4024□□	2kV 1000pF Ceramic capacitor (GR431BR7LA102K MURATA MANUFACTURING)
	MGFW4048□□	2kV 1000pF Ceramic capacitor (GR431BR7LA102K MURATA MANUFACTURING)
L1 :	MGFW4005□□	15.0A 1.0μ H Inductor (SRP7050TA-1R0M BOURNS)
	MGFW4024□□	12.0A 1.8μ H Inductor (SRP7050TA-1R8M BOURNS)
	MGFW4048□□	6.0A 5.6μ H Inductor (SRP7050TA-5R6M BOURNS)