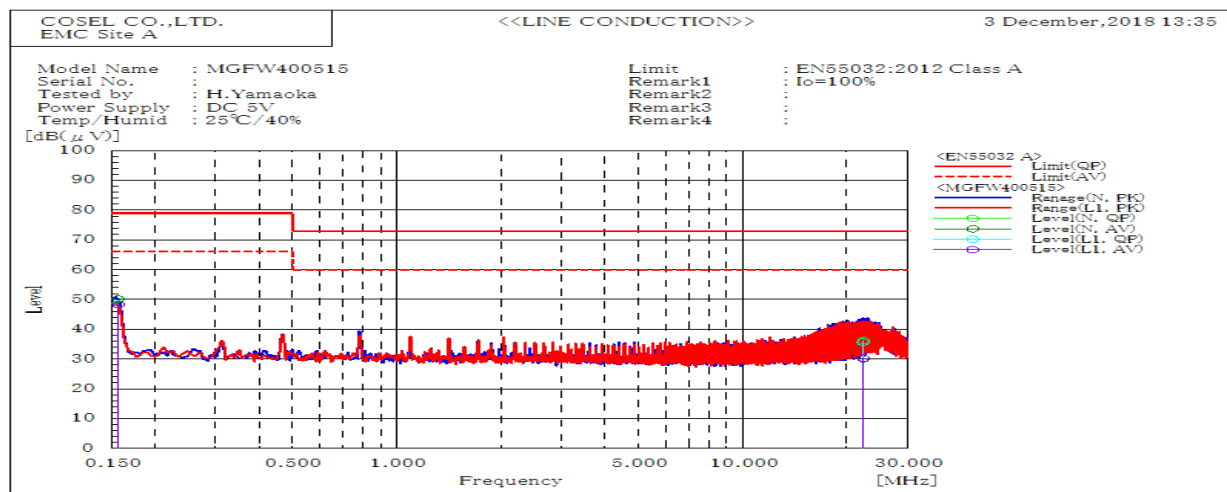
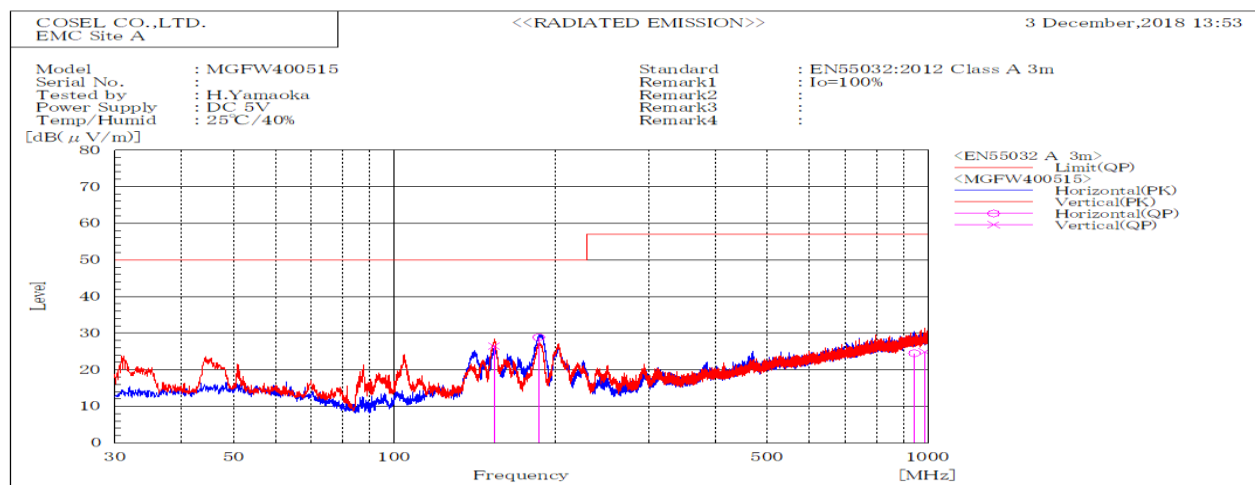


DATA SHEET		Date	15-Jan-19
Model	MGFW400515	Temp.	25 degreeC
Test	EMI Line conduction & Radiated emission	Humid.	40 %RH
		Tested by	H.Yamaoka



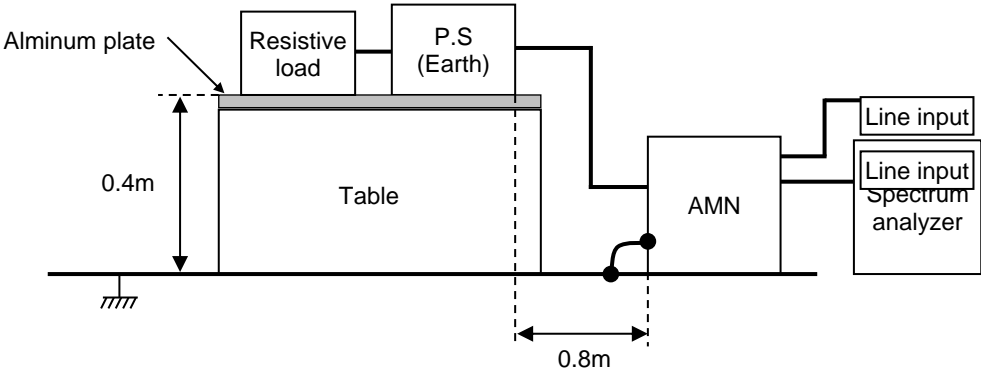
Frequency MHz	Line	Level dB(μV)		Limit dB(μV)		Margin dB		Pass/Fail	Remark
		QP	AV	QP	AV	QP	AV		
0.157	N	50.2	50.1	79	66	28.8	15.9	Pass	
22.259	N	36.3	30.1	73	60	36.7	29.9	Pass	
0.157	L1	48.4	48.3	79	66	30.6	17.7	Pass	
22.25	L1	35.7	30.4	73	60	37.3	29.6	Pass	



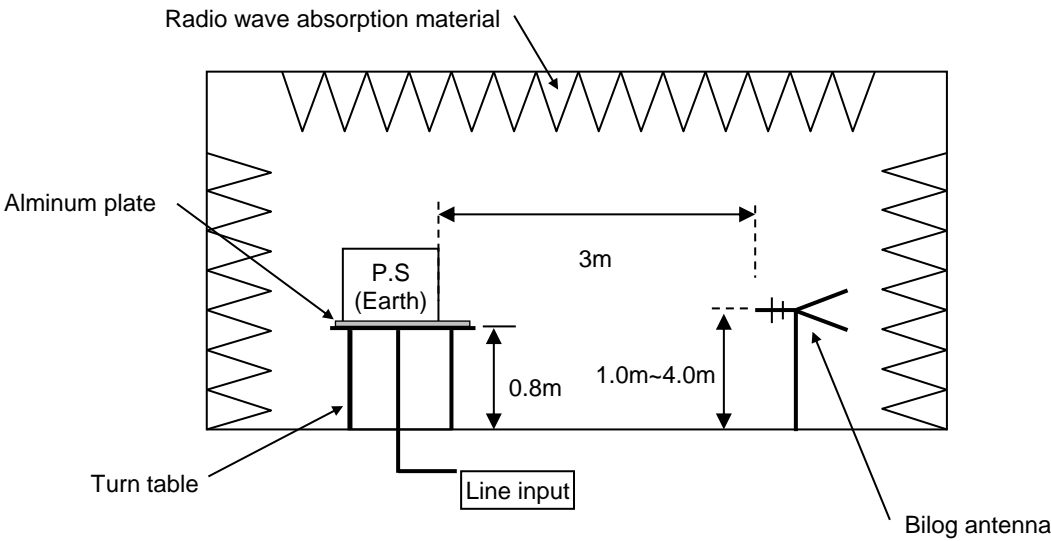
Frequency MHz	Polarization	Stability	Level dB(μV/m)		Margin dB	Pass/Fail	Height cm	Angle deg	Remark
			QP	QP	QP				
942.609	H	Stable	24.5	57	32.5	Pass	354.9	341.9	
186.552	H	Stable	28.8	50	21.2	Pass	166.9	173.3	
983.472	V	Stable	24.9	57	32.1	Pass	288.6	107.5	
154.024	V	Stable	26.4	50	23.6	Pass	130.7	302.3	

DATA SHEET		Date	15-Jan-19
Model	Circuit used for measurement	Temp.	25 degreeC
Test	EMI	Humid.	40 %RH
	Line conduction & Radiated emission	Tested by	H.Yamaoka

1. Line conduction



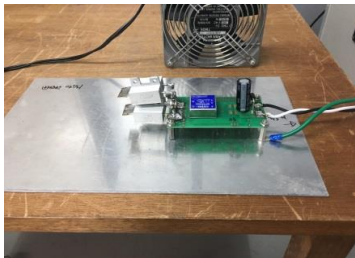
2. Radiated emission



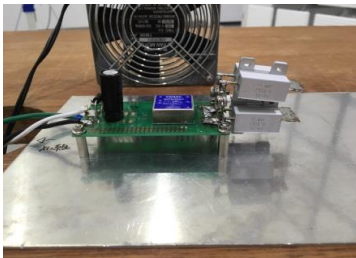
Conditions

Test : EMI  
Model Name : MGFW40□□

○Photographs of Test Set-Up  
LINE CONDUCTION



RADIATED EMISSION



○Testing circuitry

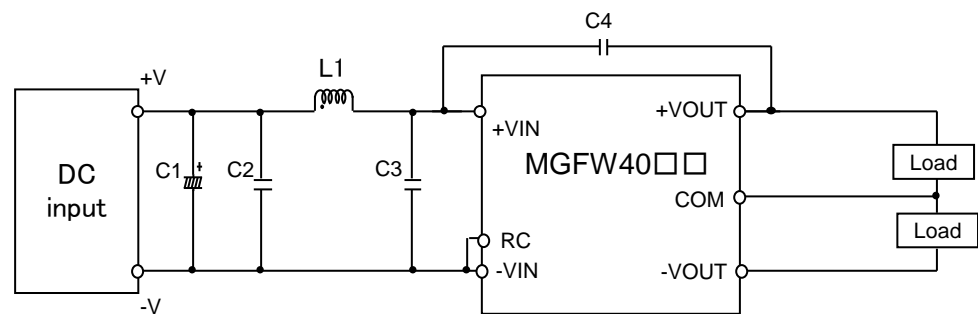


Fig.1 Testing circuitry

C1 :	MGFW4005□□	10V 4700μ F Electrolytic capacitor (UHWseries NICHICON CORPORATION)
	MGFW4024□□	63V 220μ F Electrolytic capacitor (KYseries NIPPON CHEMI-CON)
	MGFW4048□□	100V 220μ F Electrolytic capacitor (KYseries NIPPON CHEMI-CON)
C2 :	MGFW4005□□	16V 22μ F Ceramic capacitor (GRM32ER71C226K MURATA MANUFACTURING)
	MGFW4024□□	50V 10μ F Ceramic capacitor (GRM32ER71H106K MURATA MANUFACTURING)
	MGFW4048□□	100V 4.7μ F Ceramic capacitor (HMK325AC7475K TAIYOU YUDEN)
C3 :	MGFW4005□□	16V 22μ F Ceramic capacitor (GRM32ER71C226K MURATA MANUFACTURING)
	MGFW4024□□	50V 10μ F Ceramic capacitor (GRM32ER71H106K MURATA MANUFACTURING)
	MGFW4048□□	100V 4.7μ F Ceramic capacitor (HMK325AC7475K TAIYOU YUDEN)
C4 :	MGFW4005□□	2kV 1000pF Ceramic capacitor (GR431BR7LA102K MURATA MANUFACTURING)
	MGFW4024□□	2kV 1000pF Ceramic capacitor (GR431BR7LA102K MURATA MANUFACTURING)
	MGFW4048□□	2kV 1000pF Ceramic capacitor (GR431BR7LA102K MURATA MANUFACTURING)
L1 :	MGFW4005□□	15.0A 1.0μ H Inductor (SRP7050TA-1R0M BOURNS)
	MGFW4024□□	12.0A 1.8μ H Inductor (SRP7050TA-1R8M BOURNS)
	MGFW4048□□	6.0A 5.6μ H Inductor (SRP7050TA-5R6M BOURNS)