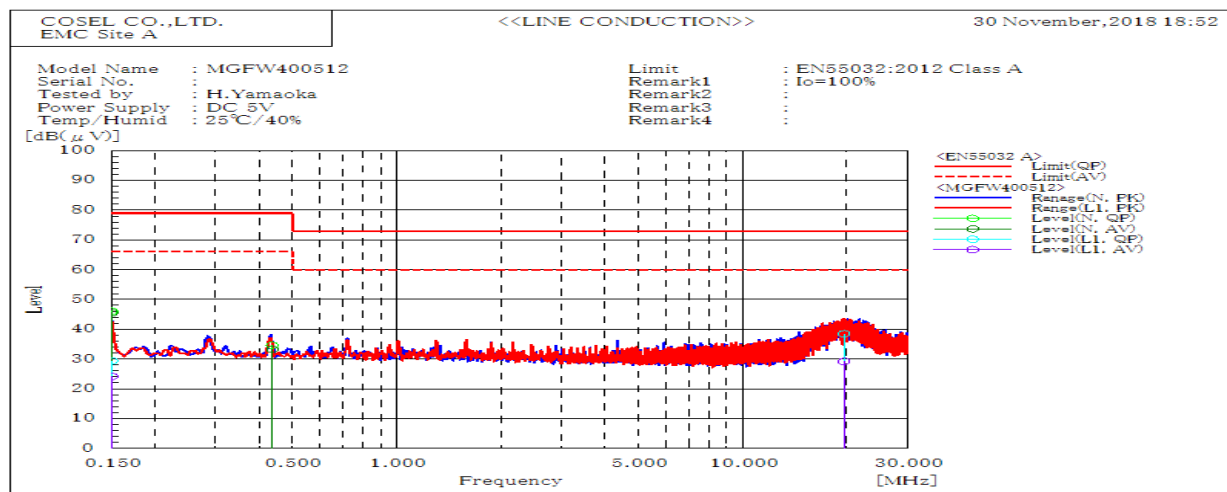
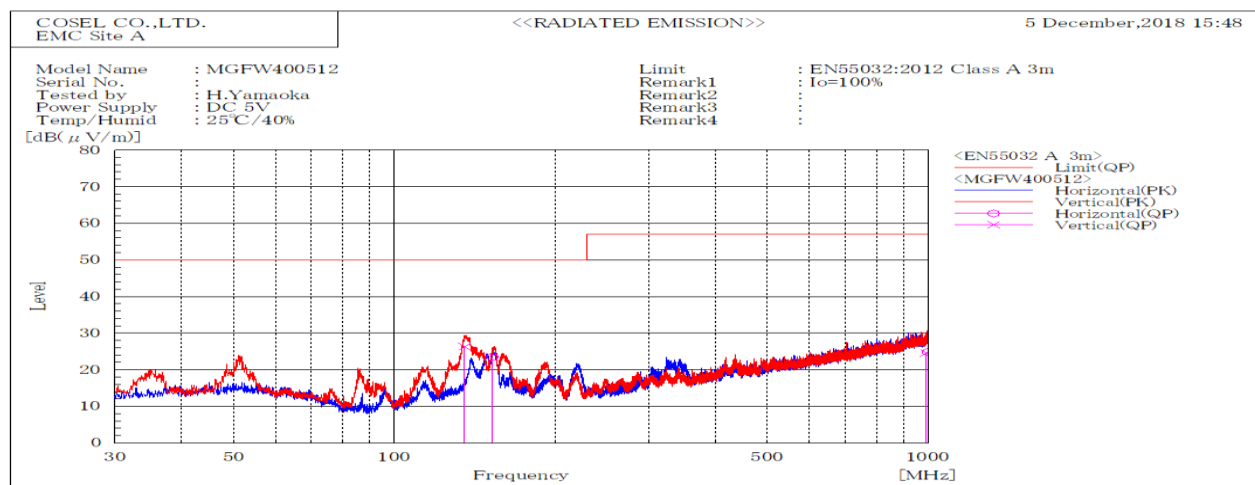


DATA SHEET		Date	15-Jan-19
Model	MGFW400512	Temp.	25 degreeC
Test	EMI Line conduction & Radiated emission	Humid.	40 %RH
		Tested by	H.Yamaoka



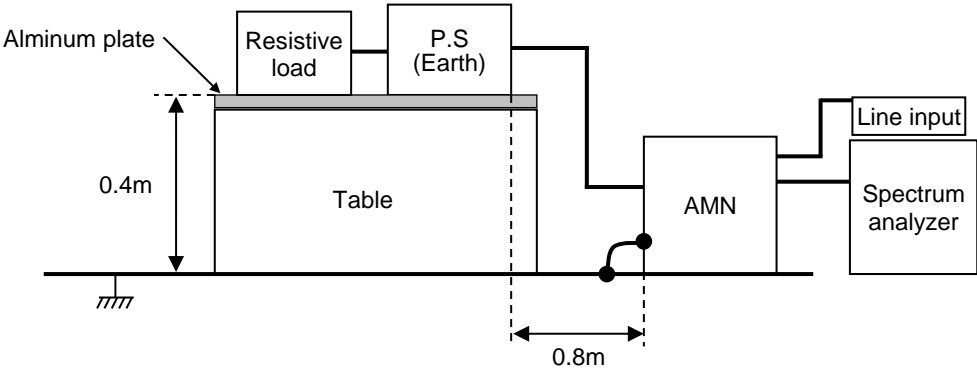
Frequency MHz	Line	Level dB(μV)		Limit dB(μV)		Margin dB		Pass/Fail	Remark
		QP	AV	QP	AV	QP	AV		
19.563	L1	38.5	29.2	73	60	34.5	30.8	Pass	
0.15	L1	29.4	24.2	79	66	49.6	41.8	Pass	
0.15	N	46.1	45.6	79	66	32.9	20.4	Pass	
0.437	N	34.7	33.3	79	66	44.3	32.7	Pass	



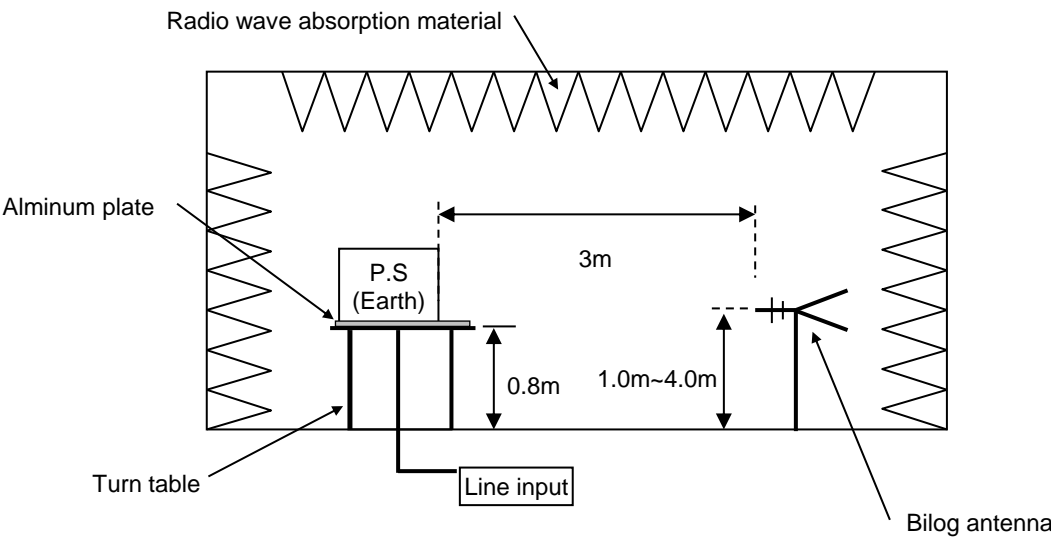
Frequency MHz	Polarization	Stability	Level dB(μV/m)		Margin dB	Pass/Fail	Height cm	Angle deg	Remark
			QP	QP	QP				
999.23	H	Stable	24.8	57	32.2	Pass	205.1	87.9	
152.834	H	Stable	23.4	50	26.6	Pass	230.9	342.7	
992.778	V	Stable	24.6	57	32.4	Pass	369	40.7	
135.6	V	Stable	26.3	50	23.7	Pass	100.2	349.7	

DATA SHEET		Date	15-Jan-19
Model	Circuit used for measurement	Temp.	25 degreeC
Test	EMI Line conduction & Radiated emission	Humid.	40 %RH
		Tested by	H.Yamaoka

1. Line conduction



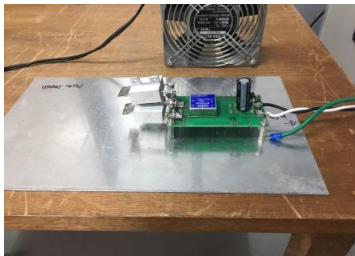
2. Radiated emission



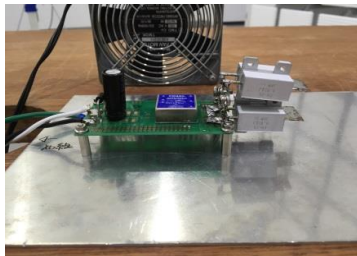
Conditions

Test : EMI
Model Name : MGFW40□□

○Photographs of Test Set-Up
LINE CONDUCTION



RADIATED EMISSION



○Testing circuitry

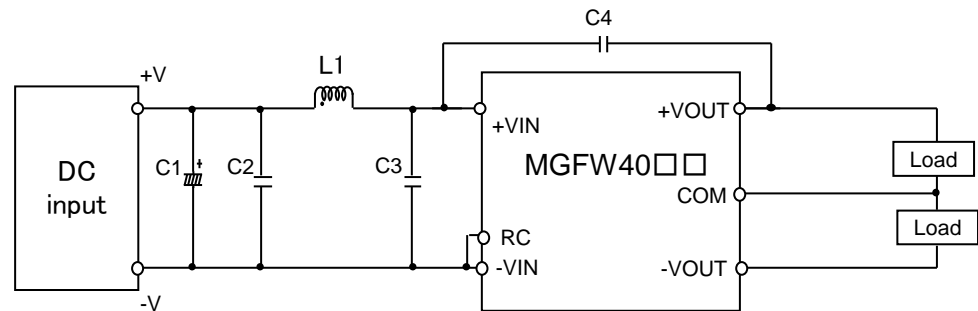


Fig.1 Testing circuitry

C1 :	MGFW4005□□	10V 4700μ F Electrolytic capacitor (UHWseries NICHICON CORPORATION)
	MGFW4024□□	63V 220μ F Electrolytic capacitor (KYseries NIPPON CHEMI-CON)
	MGFW4048□□	100V 220μ F Electrolytic capacitor (KYseries NIPPON CHEMI-CON)
C2 :	MGFW4005□□	16V 22μ F Ceramic capacitor (GRM32ER71C226K MURATA MANUFACTURING)
	MGFW4024□□	50V 10μ F Ceramic capacitor (GRM32ER71H106K MURATA MANUFACTURING)
	MGFW4048□□	100V 4.7μ F Ceramic capacitor (HMK325AC7475K TAIYOU YUDEN)
C3 :	MGFW4005□□	16V 22μ F Ceramic capacitor (GRM32ER71C226K MURATA MANUFACTURING)
	MGFW4024□□	50V 10μ F Ceramic capacitor (GRM32ER71H106K MURATA MANUFACTURING)
	MGFW4048□□	100V 4.7μ F Ceramic capacitor (HMK325AC7475K TAIYOU YUDEN)
C4 :	MGFW4005□□	2kV 1000pF Ceramic capacitor (GR431BR7LA102K MURATA MANUFACTURING)
	MGFW4024□□	2kV 1000pF Ceramic capacitor (GR431BR7LA102K MURATA MANUFACTURING)
	MGFW4048□□	2kV 1000pF Ceramic capacitor (GR431BR7LA102K MURATA MANUFACTURING)
L1 :	MGFW4005□□	15.0A 1.0μ H Inductor (SRP7050TA-1R0M BOURNS)
	MGFW4024□□	12.0A 1.8μ H Inductor (SRP7050TA-1R8M BOURNS)
	MGFW4048□□	6.0A 5.6μ H Inductor (SRP7050TA-5R6M BOURNS)