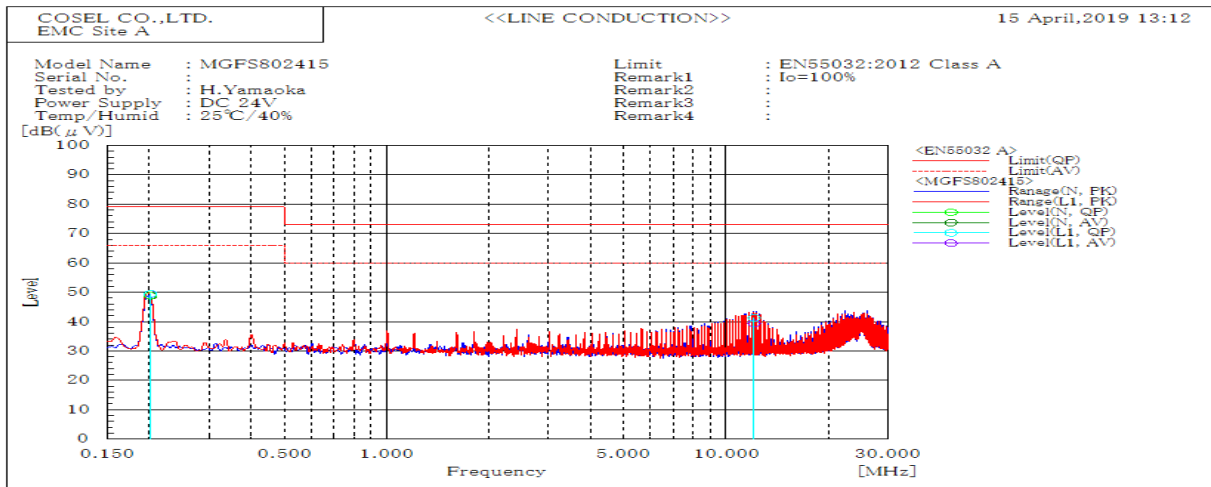
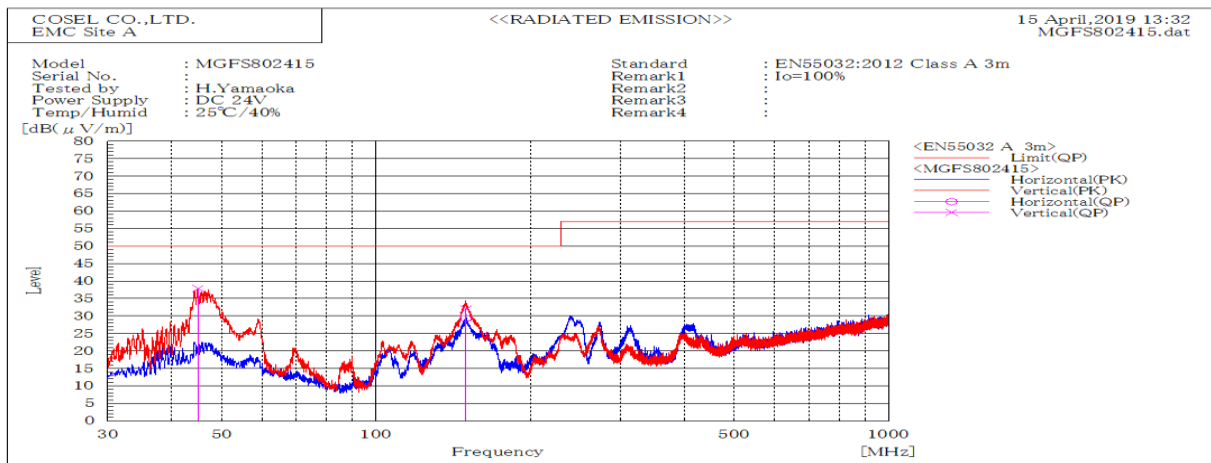


| DATA SHEET | | Date | 23-Apr-19 |
|------------|--|-----------|------------|
| Model | MGFS802415 | Temp. | 25 degreeC |
| Test | EMI Line conduction & Radiated emission | Humid. | 40 %RH |
| | | Tested by | H.Yamaoka |



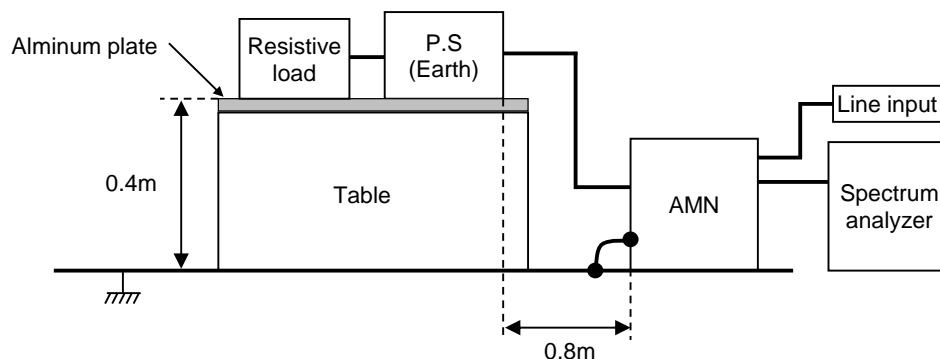
| Frequency | Line | Level | | Limit | | Margin | | Pass/Fail | Remark |
|-----------|------|--------|------|--------|----|--------|------|-----------|--------|
| MHz | | dB(μV) | | dB(μV) | | dB | | | |
| | | QP | AV | QP | AV | QP | AV | | |
| 0.201 | L1 | 49.4 | 49.4 | 79 | 66 | 29.6 | 16.6 | Pass | |
| 12.093 | L1 | 41.3 | 39.4 | 73 | 60 | 31.7 | 20.6 | Pass | |
| 0.202 | N | 48.9 | 48.8 | 79 | 66 | 30.1 | 17.2 | Pass | |



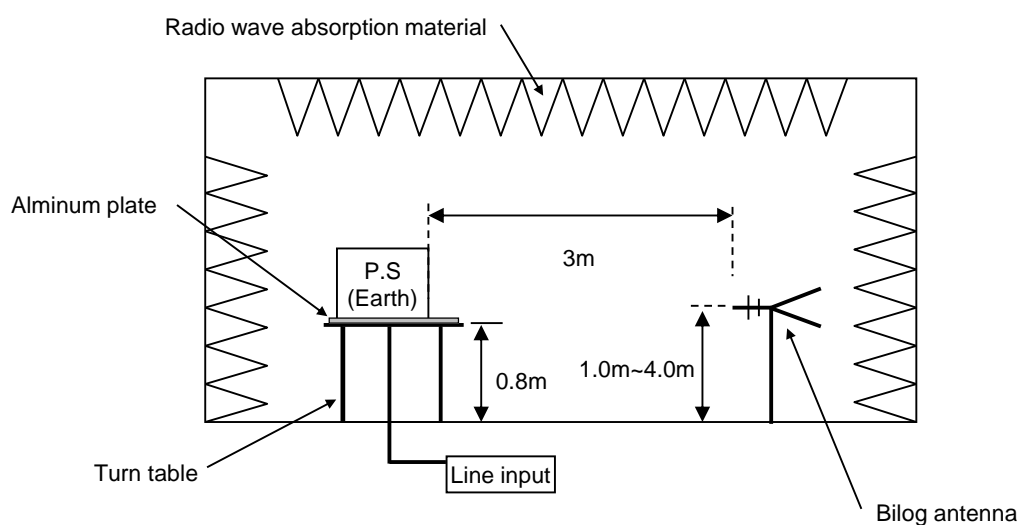
| Frequency MHz | Polarization | Stability | Level dB(μV/m) | | Margin dB | Pass/Fail | Height cm | Angle deg | Remark |
|------------------|--------------|-----------|-------------------|----|--------------|-----------|--------------|--------------|--------|
| | | | QP | QP | | | | | |
| 45.022 | V | Stable | 37.8 | 50 | 12.2 | Pass | 100 | 266.7 | |
| 149.808 | V | Stable | 32 | 50 | 18 | Pass | 100.2 | 262.6 | |
| 149.737 | H | Stable | 29.3 | 50 | 20.7 | Pass | 221.9 | 160 | |

| DATA SHEET | | Date | 23-Apr-19 |
|------------|--|-----------|------------|
| Model | Circuit used for measurement | Temp. | 25 degreeC |
| Test | EMI Line conduction & Radiated emission | Humid. | 40 %RH |
| | | Tested by | H.Yamaoka |

1. Line conduction



2. Radiated emission



Conditions

Test : EMI

Model Name : MGFS80□□

○Photographs of Test Set-Up LINE CONDUCTION



○Testing circuitry

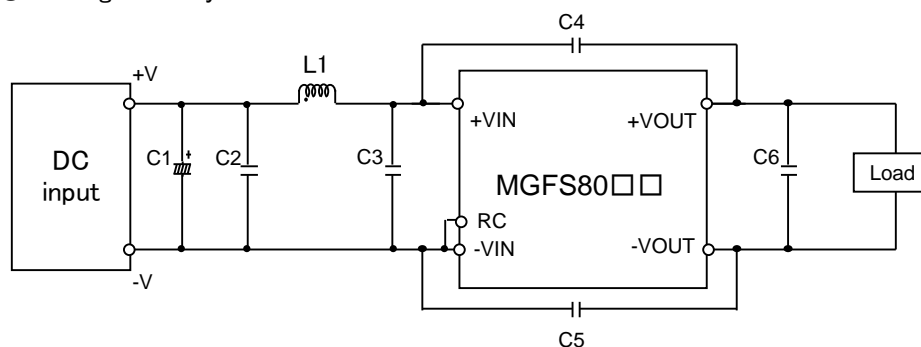


Fig.1 Testing circuitry

- C1 : MGFS8024□□ 63V 470 μ F Electrolytic capacitor (ELXZseries NIPPON CHEMI-CON)
MGFS8048□□ 100V 220 μ F Electrolytic capacitor (KYseries NIPPON CHEMI-CON)
- C2 : MGFS8024□□ 50V 10 μ F Ceramic capacitor (GRM32ER71H106K MURATA MANUFACTURING)
MGFS8048□□ 100V 4.7 μ F Ceramic capacitor (HMK325C7475K TAIYOU YUDEN)
- C3 : MGFS8024□□ 50V 10 μ F Ceramic capacitor (GRM32ER71H106K MURATA MANUFACTURING)
MGFS8048□□ 100V 4.7 μ F Ceramic capacitor (HMK325C7475K TAIYOU YUDEN)
- C4,C5 : MGFS8024□□ 2kV 2200pF Ceramic capacitor
(GR443QR73D222KW01 MURATA MANUFACTURING)
MGFS8048□□ 2kV 3300pF Ceramic capacitor
(GR443QR73D332KW01 MURATA MANUFACTURING)
- C6 : MGFS8024□□ 25V 22 μ F Ceramic capacitor (GRM32ER71E226K MURATA MANUFACTURING)
MGFS8048□□ 25V 22 μ F Ceramic capacitor (GRM32ER71E226K MURATA MANUFACTURING)
- L1 : MGFS8024□□ 12.0A 1.8 μ H Inductor (SRP7050TA-1R8M BOURNS)
MGFS8048□□ 8.0A 3.3 μ H Inductor (SRP7050TA-3R3M BOURNS)

RADIATED EMISSION

