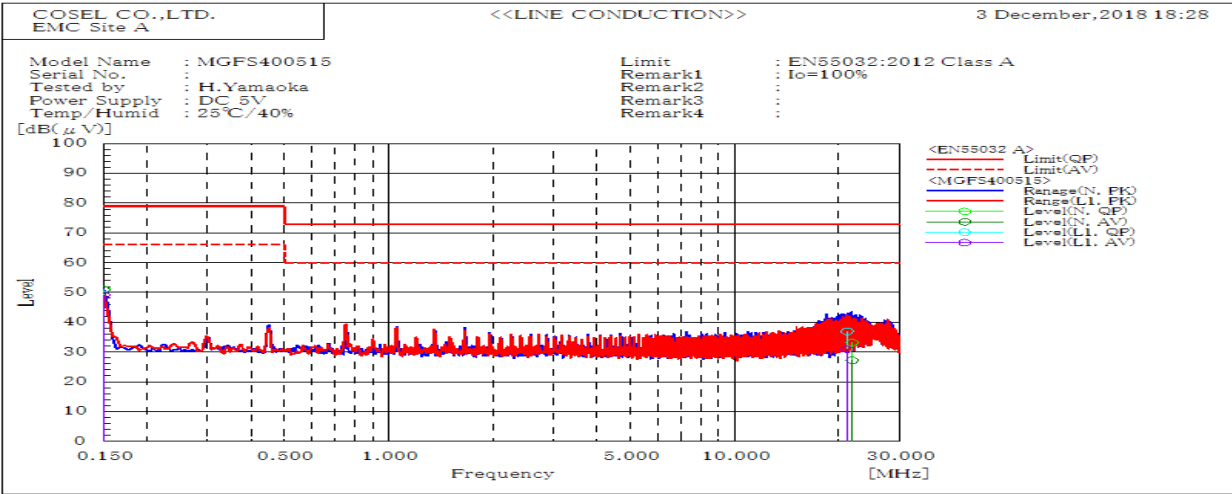
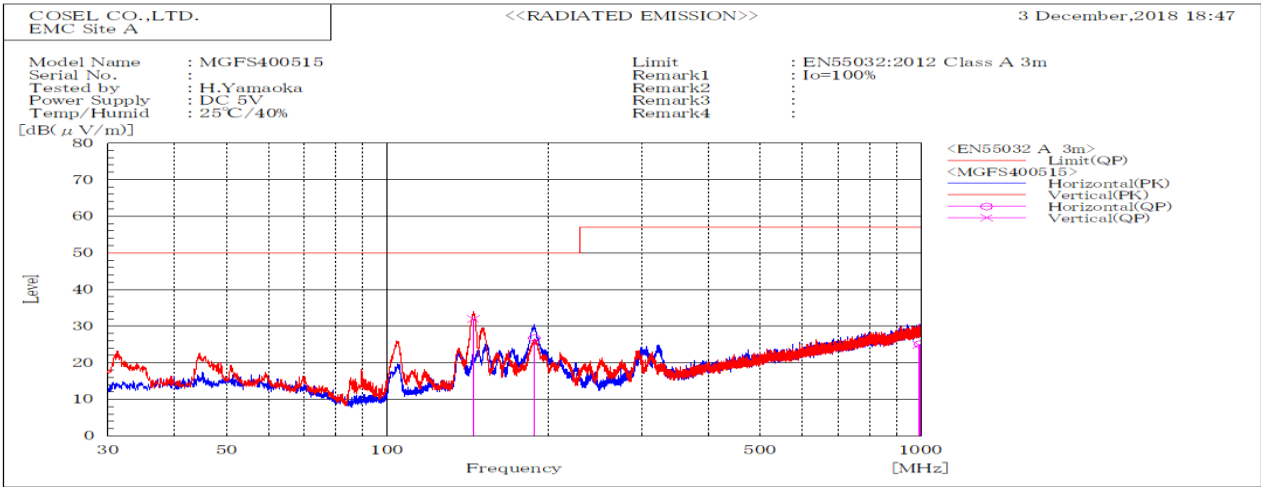


DATA SHEET		Date	15-Jan-19
Model	MGFS400515	Temp.	25 degreeC
Test	EMI Line conduction & Radiated emission	Humid.	40 %RH
		Tested by	H.Yamaoka



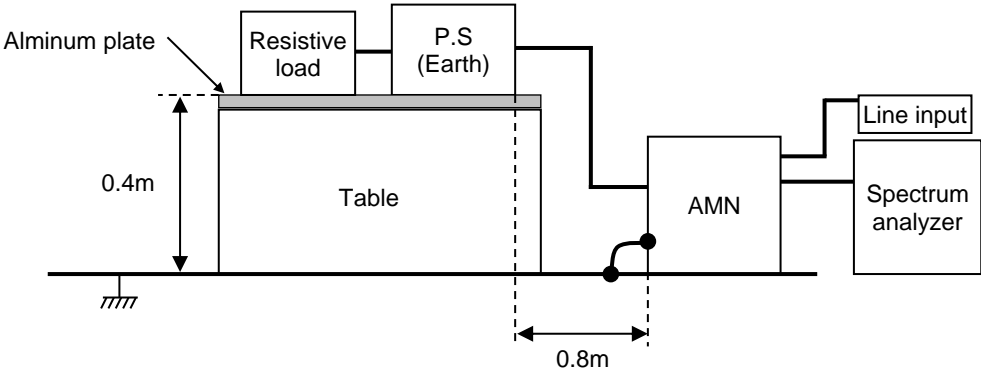
Frequency MHz	Line	Level dB(μV)		Limit dB(μV)		Margin dB		Pass/Fail	Remark
		QP	AV	QP	AV	QP	AV		
0.15	L1	49.3	49.2	79	66	29.7	16.8	Pass	
21.09	L1	36.9	30.9	73	60	36.1	29.1	Pass	
0.15	N	51	51	79	66	28	15	Pass	
21.771	N	33.2	27.2	73	60	39.8	32.8	Pass	



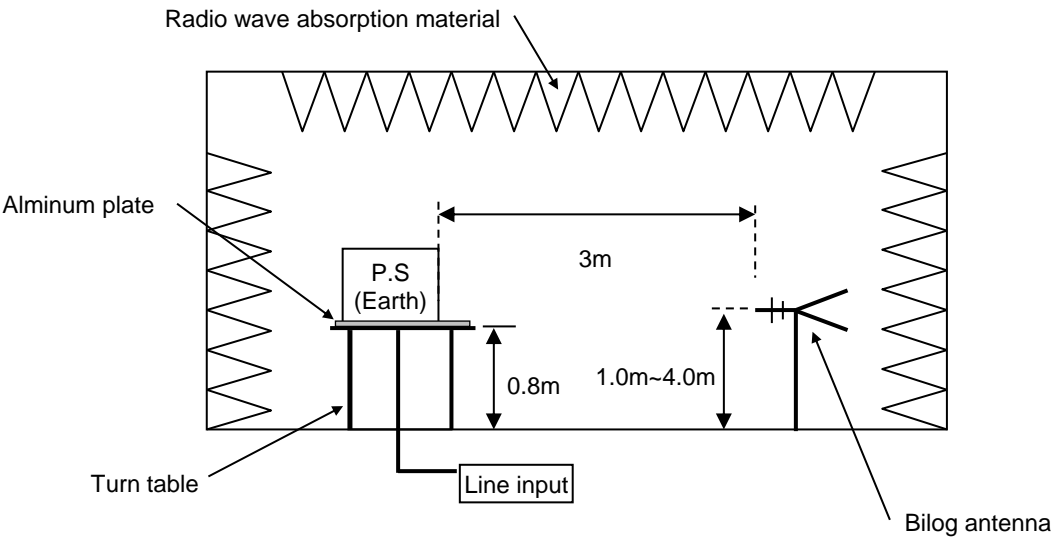
Frequency MHz	Polarization	Stability	Level dB(μV/m)		Margin dB	Pass/Fail	Height cm	Angle deg	Remark
			QP	QP	QP				
145.033	V	Stable	32	50	18	Pass	100.2	114.2	
989.169	V	Stable	24.8	57	32.2	Pass	254	353.3	
995.067	H	Stable	25.1	57	31.9	Pass	157.8	296.6	
188.647	H	Stable	26.7	50	23.3	Pass	165	0	

DATA SHEET		Date	15-Jan-19
Model	Circuit used for measurement	Temp.	25 degreeC
Test	EMI Line conduction & Radiated emission	Humid.	40 %RH
		Tested by	H.Yamaoka

1. Line conduction



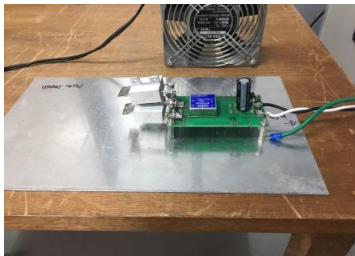
2. Radiated emission



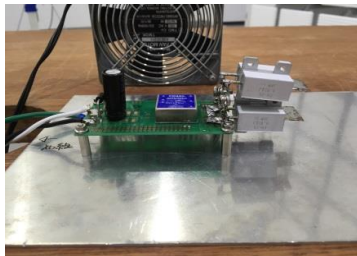
Conditions

Test : EMI  
Model Name : MGFS40□□

○Photographs of Test Set-Up  
LINE CONDUCTION



RADIATED EMISSION



○Testing circuitry

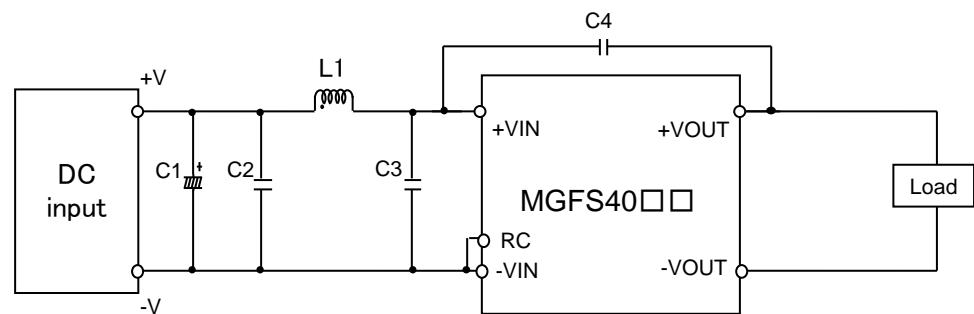


Fig.1 Testing circuitry

C1 :	MGFS4005□□	10V 4700μ F Electrolytic capacitor (UHWseries NICHICON CORPORATION)
	MGFS4024□□	63V 220μ F Electrolytic capacitor (KYseries NIPPON CHEMI-CON)
	MGFS4048□□	100V 220μ F Electrolytic capacitor (KYseries NIPPON CHEMI-CON)
C2 :	MGFS4005□□	16V 22μ F Ceramic capacitor (GRM32ER71C226K MURATA MANUFACTURING)
	MGFS4024□□	50V 10μ F Ceramic capacitor (GRM32ER71H106K MURATA MANUFACTURING)
	MGFS4048□□	100V 4.7μ F Ceramic capacitor (HMK325AC7475K TAIYOU YUDEN)
C3 :	MGFS4005□□	16V 22μ F Ceramic capacitor (GRM32ER71C226K MURATA MANUFACTURING)
	MGFS4024□□	50V 10μ F Ceramic capacitor (GRM32ER71H106K MURATA MANUFACTURING)
	MGFS4048□□	100V 4.7μ F Ceramic capacitor (HMK325AC7475K TAIYOU YUDEN)
C4 :	MGFS4005□□	2kV 1000pF Ceramic capacitor (GR431BR7LA102K MURATA MANUFACTURING)
	MGFS4024□□	2kV 1000pF Ceramic capacitor (GR431BR7LA102K MURATA MANUFACTURING)
	MGFS4048□□	2kV 1000pF Ceramic capacitor (GR431BR7LA102K MURATA MANUFACTURING)
L1 :	MGFS4005□□	15.0A 1.0μ H Inductor (SRP7050TA-1R0M BOURNS)
	MGFS4024□□	12.0A 1.8μ H Inductor (SRP7050TA-1R8M BOURNS)
	MGFS4048□□	6.0A 5.6μ H Inductor (SRP7050TA-5R6M BOURNS)