

Temperature increase of main components: 主要部品温度上昇

LMA240F (Convection)

1. Conditions

- (1) Input :AC 85 ~ 264 [V]
 (2) Output :Rated output *Derating is required at AC85 - 90[V] input.
 (3) Mounting method :Shown as Fig.1.1

2. Result

No.	Parts name	Symbol No.	Increase (ΔT)				Rated temp. [°C]	Reference
			[deg]					
			24V					
1	Line filter	L101	52				120	
2	Line filter	L102	57				120	
3	Rectifier(Input)	SS101	52				150	Junction Temp.
4	Inrush Current Limiting Thyristor	SCR101	70				130	
5	Choke coil(PFC)	L104	60				105	
6	Input capacitor	C128	24				150	Junction Temp.
7	Rectified diode(PFC)	SS102	64				150	Junction Temp.
8	Transistor(PFC)	TR101	68				150	Junction Temp.
9	Switching transistor	TR201	64				130	
10	Transformer	T201	64				150	Junction Temp.
11	Rectified Diode(Output)	SS502	66				130	
12	Output Choke	L507	31				105	
13	Output Capacitor	C513	20					
14								
15								
16								
17								
18								
19								
20								

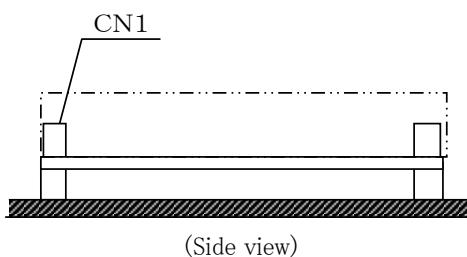


Fig.1.1 Mounting method
(Normal position)

*All information presented herein are not guaranteed.

*本資料は参考資料であり、その内容を保証するものではありません。