

Jun.10,2011

Cosel.co.,ltd.

Temperature increase of main components: 主要部品温度上昇

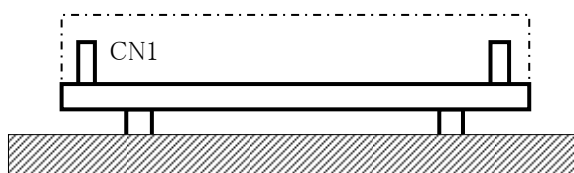
Model: LGA75A

1. Conditions

- (1) Input :AC 85 ~ 132 [V]
 (2) Output :Rated output
 (3) Mounting method :Shown as Fig.1.1

2. Result

No.	Parts name	Symbol No.	Increase (ΔT)						Rated temp. [°C]	Reference
			[deg]							
			3.3V	15V	48V					
1	Line Filter	L101	40	64	55				130	
2	Rectifier(Input)	SS101	59	73	68				150	Junction Temp.
3	Input Capacitor	C111	18	26	23				105	
4	Input Capacitor	C112	27	35	35				105	
5	Transformer	T101	47	55	54				130	
6	Switching Transistor	TR201	63	68	62				150	Junction Temp.
7	Rectified Diode(Output)	SS501	73	56	46				150	Junction Temp.
8	Switching Transistor	L507	51	34	24				130	
9	Output Capacitor	C506	34	18	8				105	
10	Output Capacitor	C507	34	14	13				105	
11										
12										
13										
14										
15										
16										
17										
18										
19										
20										



(Side view)

Fig.1.1 Mounting method
(Normal position)

* All information presented herein are not guaranteed.

※ 本資料は参考資料であり、その内容を保証するものではありません。