

Nov.8,2010

Cosel.co.,ltd.

Temperature increase of main components: 主要部品温度上昇

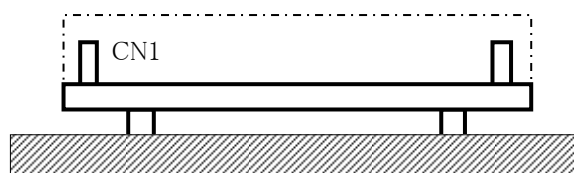
Model: LGA50A

1. Conditions

- (1) Input :AC 85 ~ 132 [V]
 (2) Output :Rated output
 (3) Mounting method :Shown as Fig.1.1

2. Result

No.	Parts name	Symbol No.	Increase (ΔT)						Rated temp. [°C]	Reference
			[deg]							
			3.3V	15V	48V					
1	Line Filter	L101	23	43	45				120	
2	Rectifier(Input)	SS101	37	59	60				150	Junction Temp.
3	Switching Transistor	TR201	46	59	59				150	Junction Temp.
4	Transformer	T101	43	48	45				130	
5	Rectified Diode(Output)	SS501	61	58	63				150	Junction Temp.
6	Output Choke	L507	56	46	38				130	
7	Input Capacitor	C111	21	24	27				105	
8	Input Capacitor	C112	28	34	37				105	
9	Output Capacitor	C506	30	21	20				105	
10	Output Capacitor	C507	32	16	23				105	
11										
12										
13										
14										
15										
16										
17										
18										
19										
20										



(Side view)

Fig.1.1 Mounting method
(Normal position)

* All information presented herein are not guaranteed.

※ 本資料は参考資料であり、その内容を保証するものではありません。