

Date : May.2,2008

## Temperature increase of main components: 主要部品温度上昇

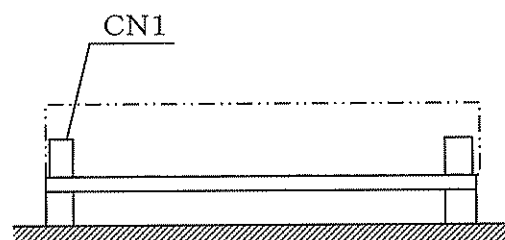
Model: LGA150A

### 1. Conditions

- (1) Input : AC 85 ~ 132 [V]  
 (2) Output : Rated output  
 (3) Mounting method : Shown as Fig.1.1

### 2. Result

No.	Parts name	Symbol No.	Increase ( $\Delta T$ )						Rated temp. [°C]	Reference
			[deg]							
			5V	12V	24V					
1	Line Filter	L101	54	50	38				120	
2	Rectifier(Input)	SS101	73	75	76				150	Junction Temp.
3	Thyristor	SCR101	63	66	71				125	Junction Temp.
4	Input Capacitor	C111	36	33	34				105	
5	Input Capacitor	C112	42	41	42				105	
6	Input Capacitor	C113	39	39	42				105	
7	Input Capacitor	C114	27	28	30				105	
8	Transformer	T101	66	60	48				130	
9	Switching Transistor	TR201	69	66	80				150	Junction Temp.
10	Rectified Diode(Output)	SS501	85	73	53				150	Junction Temp.
11	Output Choke	L507	64	60	40				130	
12	Output Capacitor	C506	31	28	19				105	
13	Output Capacitor	C507	39	34	22				105	
14	Output Capacitor	C508	43	39	22				105	
15										
16										
17										
18										
19										
20										



(Side view)

Fig.1.1 Mounting method  
(Normal position)

\*All information presented herein are not guaranteed.

\*本資料は参考資料であり、その内容を保証するものではありません。