

Temperature increase of main components: 主要部品温度上昇

LFP300F (Convection)

## 1. Conditions

- (1) Input : AC 85 ~ 264 [V]  
 (2) Output : Rated output \*Derating is required at AC85 - 90[V] input.  
 (3) Mounting method : Shown as Fig.1.1

## 2. Result

	Parts name	Symbol	Increase ( T )				Rated temp. [ ]	Reference
			[ deg]					
			24V	30V	36V	48V		
1	Line filter	L102	62	64	62	63	130	
2	Rectifier(Input)	SS101	80	82	80	82	150	Junction Temp.
3	Inrush Current Limiting Thyristor	SCR101	78	82	74	75	150	Junction Temp.
4	Choke coil(PFC)	L104	75	74	69	68	130	
5	Input capacitor	C127	20	24	20	21	105	
6	Rectified diode(PFC)	SS102	69	65	67	68	150	Junction Temp.
7	Transistor(PFC)	TR101	71	70	63	61	150	Junction Temp.
8	Switching transistor	TR201	71	75	73	76	150	Junction Temp.
9	Transformer	T201	58	64	58	54	130	
10	Rectified Diode(Output)	SS502	71	78	69	84	150	Junction Temp.
11	Output Choke	L507	47	59	44	49	130	
12	Output Capacitor	C512	20	29	29	31	105	
13								
14								
15								
16								
17								
18								
19								
20								

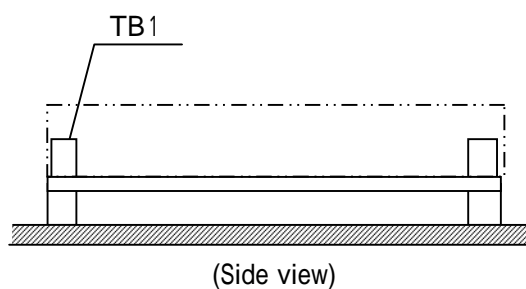


Fig.1.1 Mounting method  
(Normal position)

\*All information presented herein are not guaranteed.

\*本資料は参考資料であり、その内容を保証するものではありません。

Temperature increase of main components: 主要部品温度上昇

LFP300F (Forced air)

## 1. Conditions

- (1) Input : AC 85 ~ 264 [V]  
 (2) Output : Rated output \*Derating is required at AC85 - 90[V] input.  
 (3) Mounting method : Shown as Fig.1.1

## 2. Result

	Parts name	Symbol	Increase ( T )				Rated temp. [ ]	Reference
			[ deg]					
			24V	30V	36V	48V		
1	Line filter	L102	55	55	56	56	130	Junction Temp.
2	Rectifier(Input)	SS101	53	54	57	57	150	
3	Inrush Current Limiting Thyr	SCR101	47	51	48	50	150	
4	Choke coil(PFC)	L104	44	47	46	47	130	
5	Input capacitor	C127	2	3	2	4	105	
6	Rectified diode(PFC)	SS102	28	26	25	30	150	Junction Temp.
7	Transistor(PFC)	TR101	24	26	23	25	150	Junction Temp.
8	Switching transistor	TR201	50	55	52	45	150	Junction Temp.
9	Transformer	T201	22	29	18	23	130	
10	Rectified Diode(Output)	SS502	48	42	34	52	150	Junction Temp.
11	Output Choke	L507	18	16	12	14	130	
12	Output Capacitor	C512	6	5	6	7	105	
13								
14								
15								
16								
17								
18								
19								
20								

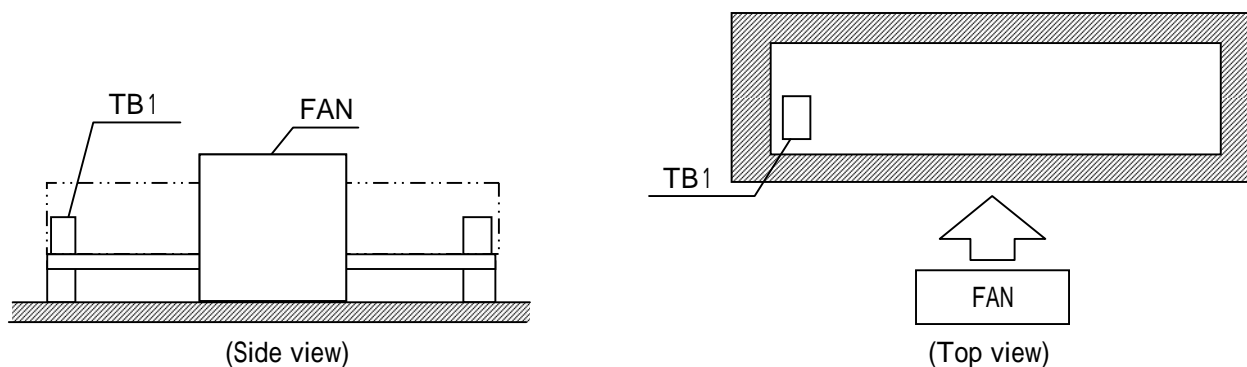


Fig.1.1 Mounting method  
(Normal position)

\*All information presented herein are not guaranteed.

\*本資料は参考資料であり、その内容を保証するものではありません。