

Temperature increase of main components: 主要部品温度上昇

LFA75F

1. Conditions

- (1) Input :AC 85 ~ 264 [V]
 (2) Output :Rated output *Derating is required at AC85 - 90[V] input.
 (3) Mounting metho :Shown as Fig.1.1

2. Result

| No. | Parts name | Symbol No. | Increase (ΔT) | | | | | | | Rated temp. [°C] | Reference |
|-----|-------------------------|------------|-------------------------|----|-----|-----|-----|-----|-----|------------------|----------------|
| | | | [deg] | | | | | | | | |
| | | | 3.3V | 5V | 12V | 15V | 24V | 36V | 48V | | |
| 1 | Rectifier(Input) | SS101 | 53 | 69 | 67 | 65 | 66 | 60 | 67 | 150 | Junction Temp. |
| 2 | Line filter | L102 | 33 | 43 | 45 | 45 | 45 | 44 | 44 | 130 | |
| 3 | Choke coil(PFC) | L103 | 45 | 58 | 58 | 58 | 55 | 52 | 55 | 130 | |
| 4 | Input capacitor | C113 | 34 | 36 | 36 | 36 | 32 | 32 | 35 | 105 | |
| 5 | Rectified diode(Output) | D108 | 54 | 69 | 59 | 64 | 57 | 55 | 59 | 150 | Junction Temp. |
| 6 | Transistor(PFC) | TR104 | 60 | 68 | 68 | 66 | 66 | 66 | 63 | 150 | Junction Temp. |
| 7 | Switching transistor | TR201 | 62 | 68 | 70 | 60 | 64 | 67 | 65 | 150 | Junction Temp. |
| 8 | Transformer | T101 | 61 | 62 | 57 | 57 | 60 | 57 | 55 | 155 | |
| 9 | Rectified diode(Output) | SS501 | 72 | 72 | 66 | 66 | 56 | 46 | 41 | 150 | Junction Temp. |
| 10 | Output Choke | L501 | 61 | 67 | — | — | — | — | — | 130 | |
| 11 | Output Choke | L501 | — | — | 57 | 53 | 44 | 35 | 32 | 120 | |
| 12 | Output Capacitor | C507 | 26 | 27 | 25 | 23 | 19 | 18 | 17 | 105 | |
| 13 | | | | | | | | | | | |
| 14 | | | | | | | | | | | |
| 15 | | | | | | | | | | | |
| 16 | | | | | | | | | | | |
| 17 | | | | | | | | | | | |
| 18 | | | | | | | | | | | |
| 19 | | | | | | | | | | | |
| 20 | | | | | | | | | | | |

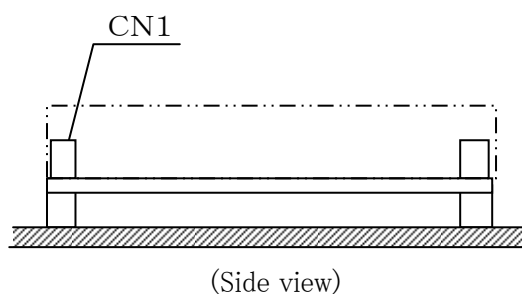


Fig.1.1 Mounting method
(Normal position)

*All information presented herein are not guaranteed.

*本資料は参考資料であり、その内容を保証するものではありません。