

Date : Nov.13,2010

Temperature increase of main components: 主要部品温度上昇

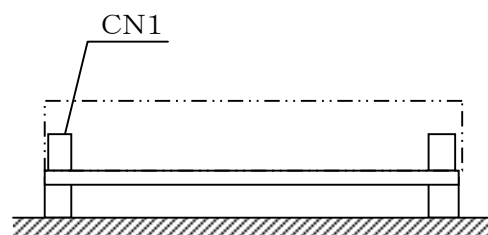
LFA150F

1. Conditions

- (1) Input :AC 85 ~ 264 [V]
 (2) Output :Rated output *Derating is required at AC85 - 90[V] input.
 (3) Mounting method :Shown as Fig.1.1

2. Result

No.	Parts name	Symbol No.	Increase (ΔT)							Rated temp. [°C]	Reference
			[deg]								
			3.3V	5V	12V	15V	24V	36V	48V		
1	Line filter	L102	44	74	74	74	77	76	76	130	
2	Rectifier(Input)	SS101	60	77	77	79	79	79	79	150	Junction Temp.
3	Choke coil(PFC)	L104	53	65	67	65	66	66	66	130	
4	Input capacitor	C127	27	35	36	35	35	35	35	105	
5	Rectified diode(Output)	D101	60	76	77	77	77	77	78	150	Junction Temp.
6	Transistor(PFC)	TR101	65	78	77	78	77	77	78	150	Junction Temp.
7	Switching transistor	TR201	67	78	78	77	77	78	80	150	Junction Temp.
8	Transformer	T201	60	69	60	59	55	55	55	130	
9	Rectified MOS-FET(Output)	TR501	73	78	—	—	—	—	—	150	Junction Temp.
10	Rectified Diode(Output)	SS501	—	—	79	66	58	58	57	150	Junction Temp.
11	Output Choke	L507	70	70	54	45	45	36	52	130	
12	Output Capacitor	C513	31	33	30	27	22	22	21	105	
13											
14											
15											
16											
17											
18											
19											
20											



(Side view)

Fig.1.1 Mounting method
(Normal position)

*All information presented herein are not guaranteed.
 *本資料は参考資料であり、その内容を保証するものではありません。