

Temperature increase of main components

Model : LEA75F

1. Conditions

- (1) Input : AC 85 ~ 264 [V]
- (2) Output : Rated output
- (3) Mounting method : Shown as Fig.1.1

2. Result

No.	Parts name	Symbol No.	Increase (ΔT)						Rated temp. [°C]	Reference
			[deg]							
			5V	12V	15V	24V				
1	Input rectifier	SS101	66	66	66	66			150	Junction temp.
2	Line filter	L101	43	43	43	43			120	
3	Choke coil(PFC)	L103	52	53	47	47			120	
4	Transistor(PFC)	TR105	65	66	67	57			150	Junction temp.
5	Rectified diode(PFC)	D102	66	66	66	66			150	Junction temp.
6	Switching transistor	TR201	61	56	54	51			150	Junction temp.
7	Transformer	T201	62	59	57	54			130	
8	Rectified diode(Output)	SS501	76	70	58	42			150	Junction temp.
9	Output choke	L507	52	40	37	34			120	
10	Input capacitor	C119	28	27	27	25			105	
11	Output capacitor	C507	36	22	18	17			105	
12										
13										
14										
15										
16										
17										
18										
19										
20										

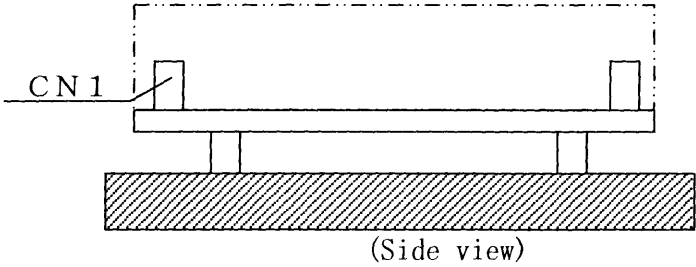


Fig.1.1 Mounting method
(Normal position)