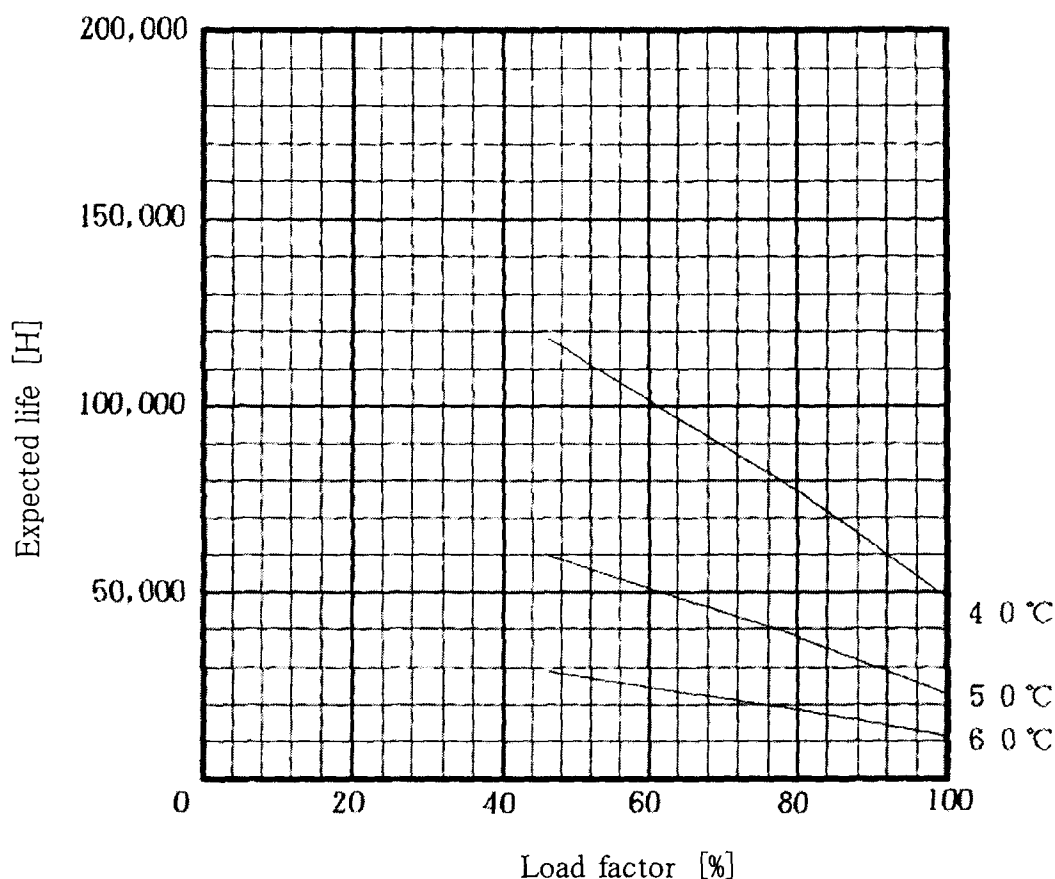


LDC60F-2 Expected Life : 推定寿命



• Above expected life time is calculated according our calculation standard.

上記推定寿命は、当社算出基準に従い算出したものです。

• Over the area of 100,000 hours, the degradation of sealing rubber, etc., is not included in the calculation.

10万時間以上の領域では、封ロゴムの劣化等の影響は、計算式には含まれていません。

• Please refer derating curve shown in instruction manual about the maximum value of ambient temperature.

周囲温度の上限は、取扱説明書のデレーティング表をご参照ください。

Conditions

(1) Input voltage

AC85~264V 60Hz

(2) Output voltage/
current

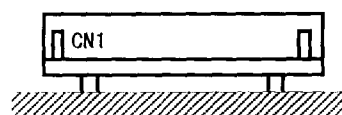
DC OUTPUT	Load factor			
	100%	75%	50%	25%
5V	5.0A	3.75A	2.5A	1.25A
15V	2.0A	1.5A	1A	0.5A
-15V	0.5A	0.375A	0.25A	0.125A

(3) Cooling method

Convection

(4) Mounting method

Refer below



Mounting method(A)